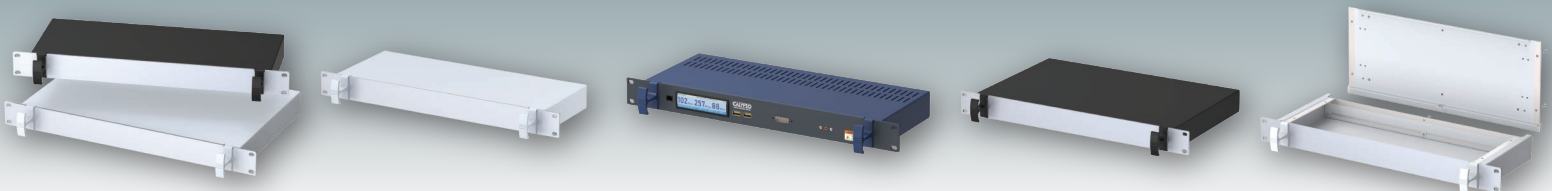
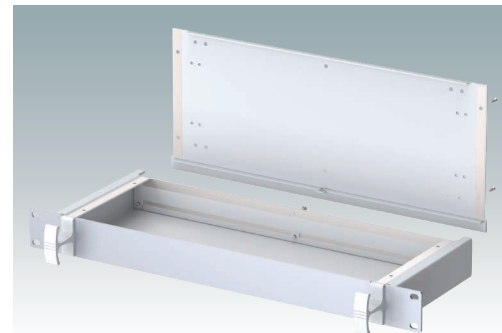
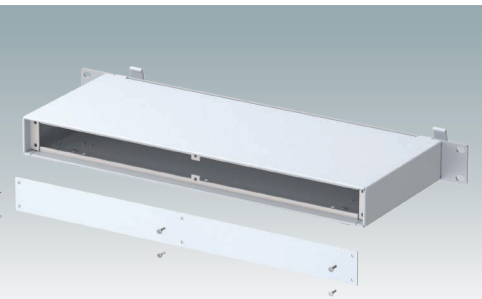
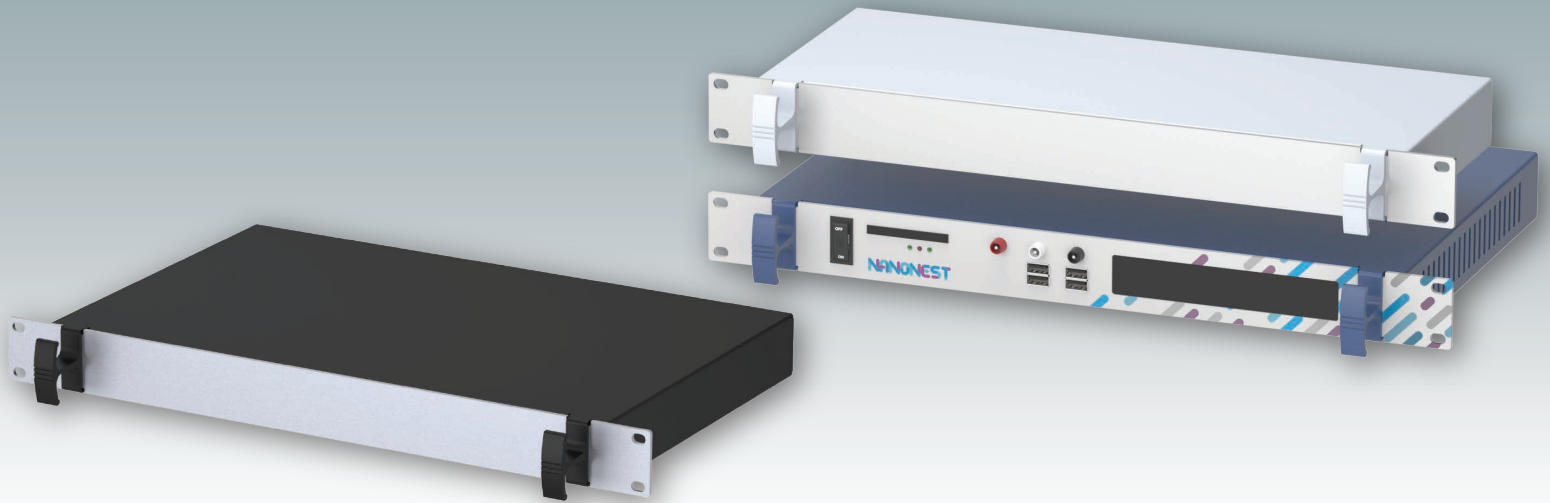


VERSAMET 19"

Rack Mount Enclosures
DIN 41494 | IEC 60297-3



VERSAMET 19"



Versatile 1U rack-mount enclosures

Modern 1U rack-mount enclosures made from aluminum, compliant with DIN 41494 and IEC 60297-3 standards. Features an attractive design with unique "comfort handles." Robust case body with removable base and rear panels. Anodized aluminum 1U x 19" front panel. Mounting holes in the base for PCBs. Optional molded feet for desktop use. Order your fully customized version.

Standard colors

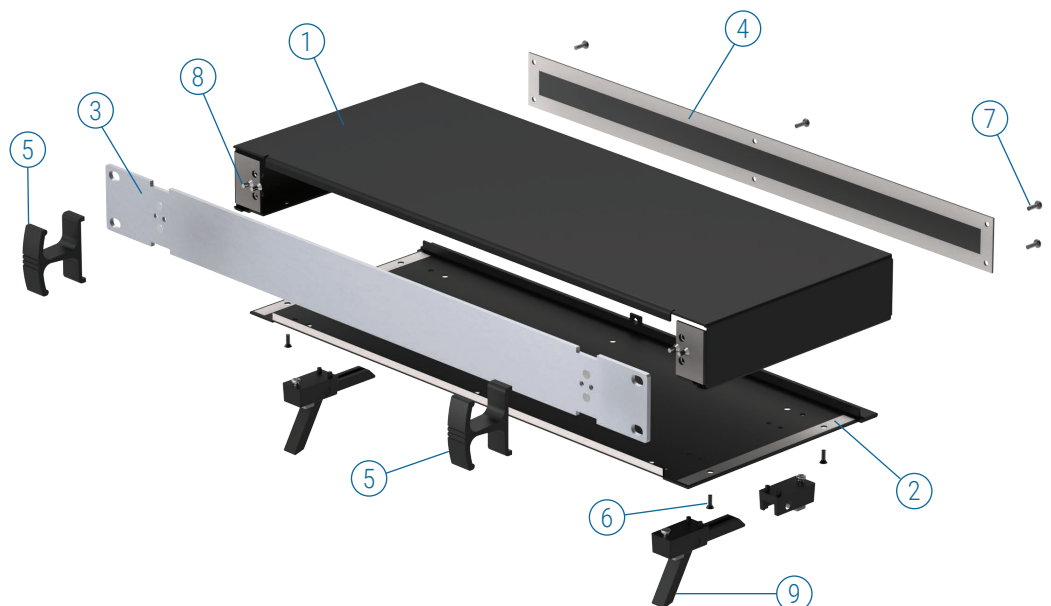
Black RAL 9005.
Light gray RAL 7035.



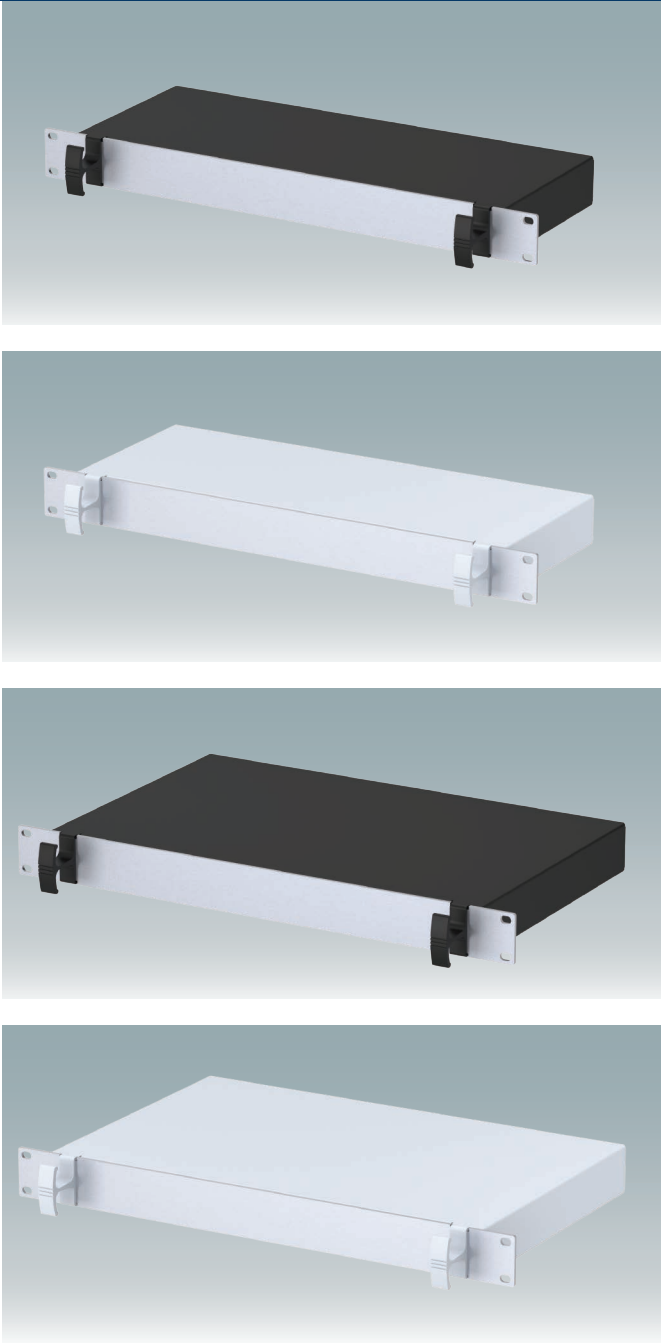
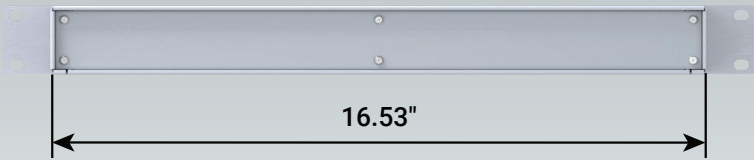
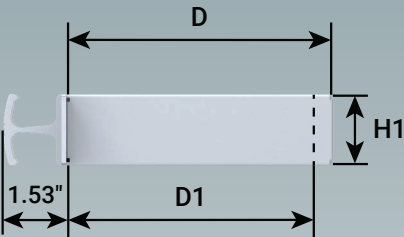
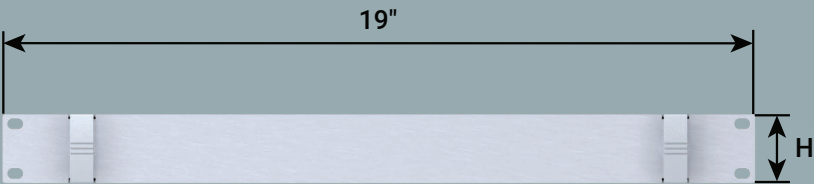
Supply

- ① Top cover
- ② Base panel
- ③ 19" front panel
- ④ Rear panel
- ⑤ Handles
- ⑥ M3 x 8 mm (x4/x6)
- ⑦ M3 x 8 mm (x6)
- ⑧ M4 nut & washer (x4)
- ⑨ *ABS feet



*accessories



VERSAMET 19"



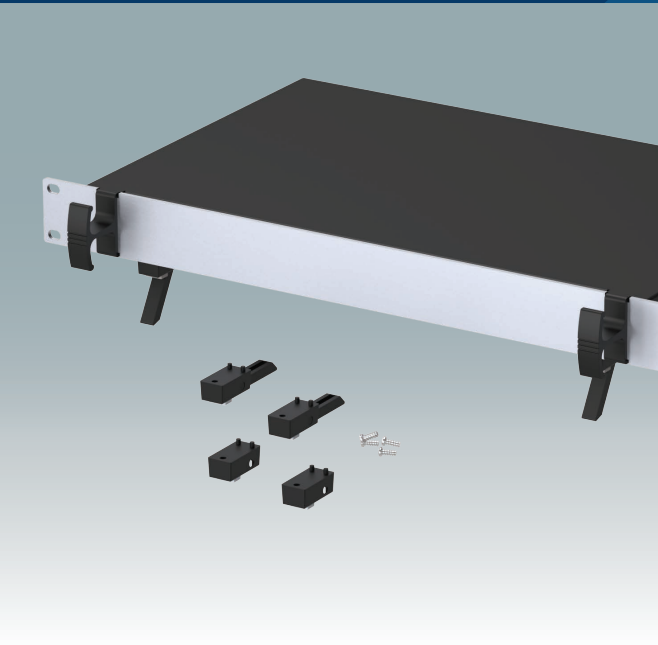
VERSAMET 19"

Part No.	Part No.	Version	H	H1	D	D1
RAL 9005 	RAL 7035 					
M 49 19 119	M 49 19 115	1U	1.73"	1.49"	6.49"	6.02"
M 49 19 129	M 49 19 125	1U	1.73"	1.49"	10.43"	9.96"

For full 2D drawings and 3D models please see our website.

For front panels and accessories see page 4.

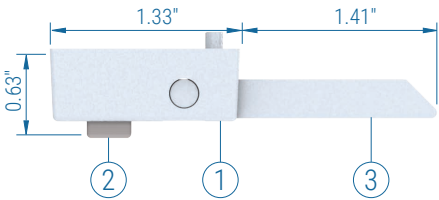
VERSAMET 19" | ACCESSORIES



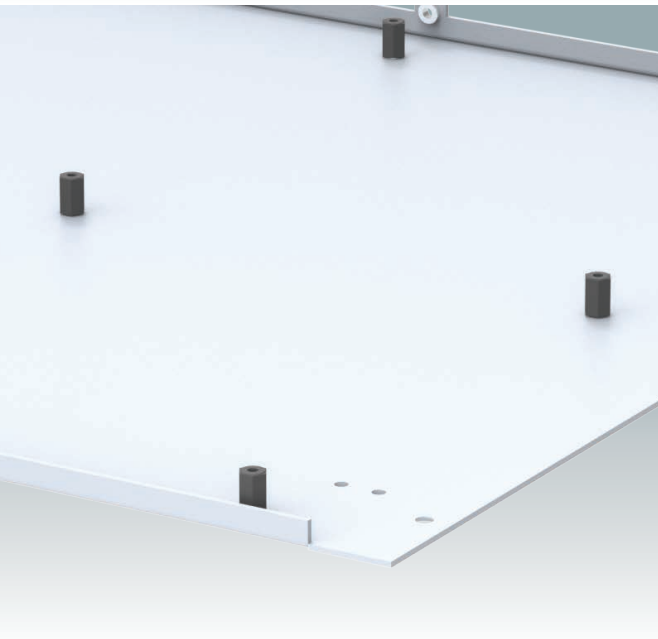
Feet Kits

These feet are attached to the pre-punched holes in the VERSAMET 19" base panel using the included self-tapping screws.

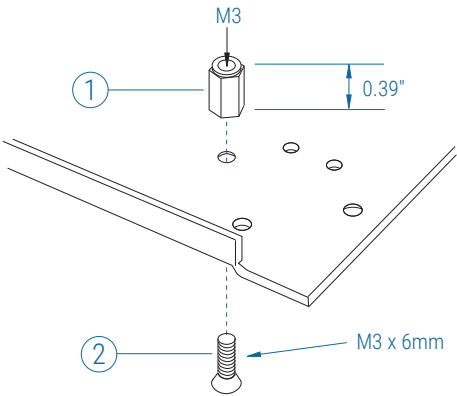
Material:
Feet and legs: ABS.
Non-slip pads: TPE.



Part No.	Version	Supply	Colors
M 56 00 015	Without tilt legs	①+② x 4	● RAL 7035
M 56 00 019	Without tilt legs	①+② x 4	● RAL 9005
M 56 00 045	With tilt legs	①+② x 4 +③ x 2	● RAL 7035
M 56 00 049	With tilt legs	①+② x 4 +③ x 2	● RAL 9005



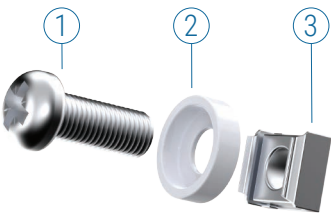
PCB Mounting Kit



Part No.	Supply
M 56 00 001	①+② x 10



19" Mounting Kit



Part No.	Supply	Color
M 60 00 035	①+②+③ x 4	● RAL 7035 ②
M 59 00 016	①+②+③ x 4	● RAL 9005 ②
M 59 00 018	①+②+③ x 4	● RAL 9005 ① ②



Order your own customized version

We can supply the VERSAMET 19" enclosures fully customized to your individual technical specifications.

The external depth dimension can be modified to ensure your assemblies and equipment will fit exactly.

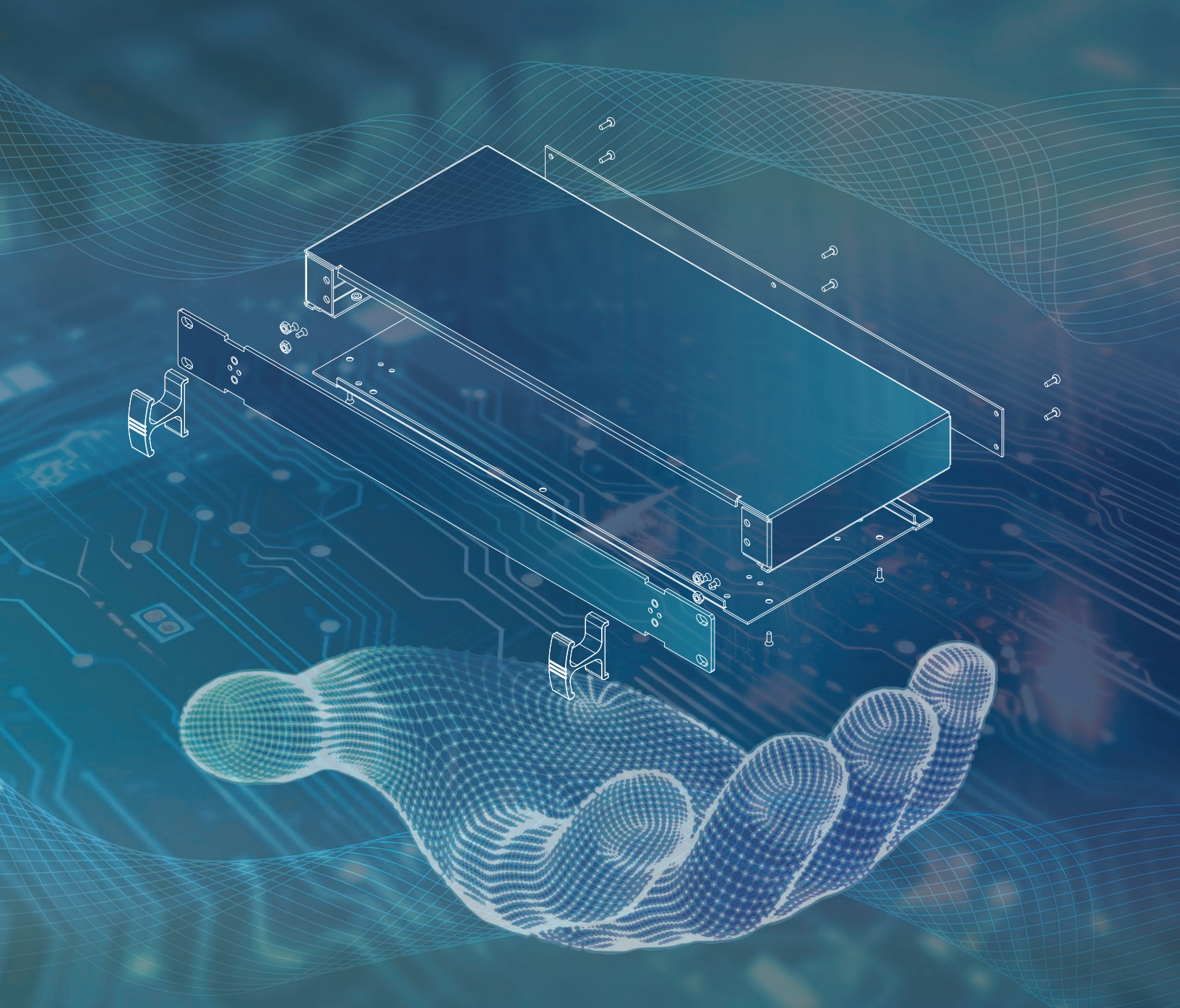
The enclosures and front panels can be machined with holes and cutouts for fitting displays, keypads, HMI touch panels, control buttons and connections.

Other services include adding inserts and screw bosses; custom colors and finishes; digital and silk-screen printing and engraving.

Having a flexible manufacturing system allows us to offer competitive prices even for small quantities. Do not hesitate to ask us for a quotation.

Our sales team will be very happy to discuss your requirements and help you specify your VERSAMET 19" enclosures exactly as you need them.





METcase™

MANUFACTURER

Metcase Enclosures

A division of:
OKW Enclosures Ltd.
15 Brunel Way
Segensworth East
Fareham, Hampshire
PO15 5TX
United Kingdom

Telephone: +44 (0) 1489 583858
Email: sales@metcase.co.uk
Website: www.metcase.co.uk

© OKW Enclosures Ltd. All rights reserved
Catalogue Edition 1.1 – December 2025.
This catalog will be valid until 31/12/2027.
Subject to technical modifications without notice.
Typographical and other errors do not justify any
claim for damages.
Digital Version: 12/2025e

Presented by:



OKW Enclosures, Inc.

3000 Old Pond Road,
Bridgeville, PA 15017
Phone: (412) 220 9244
Toll Free: (800) 965 9872
Email: sales@metcaseusa.com

www.metcaseusa.com