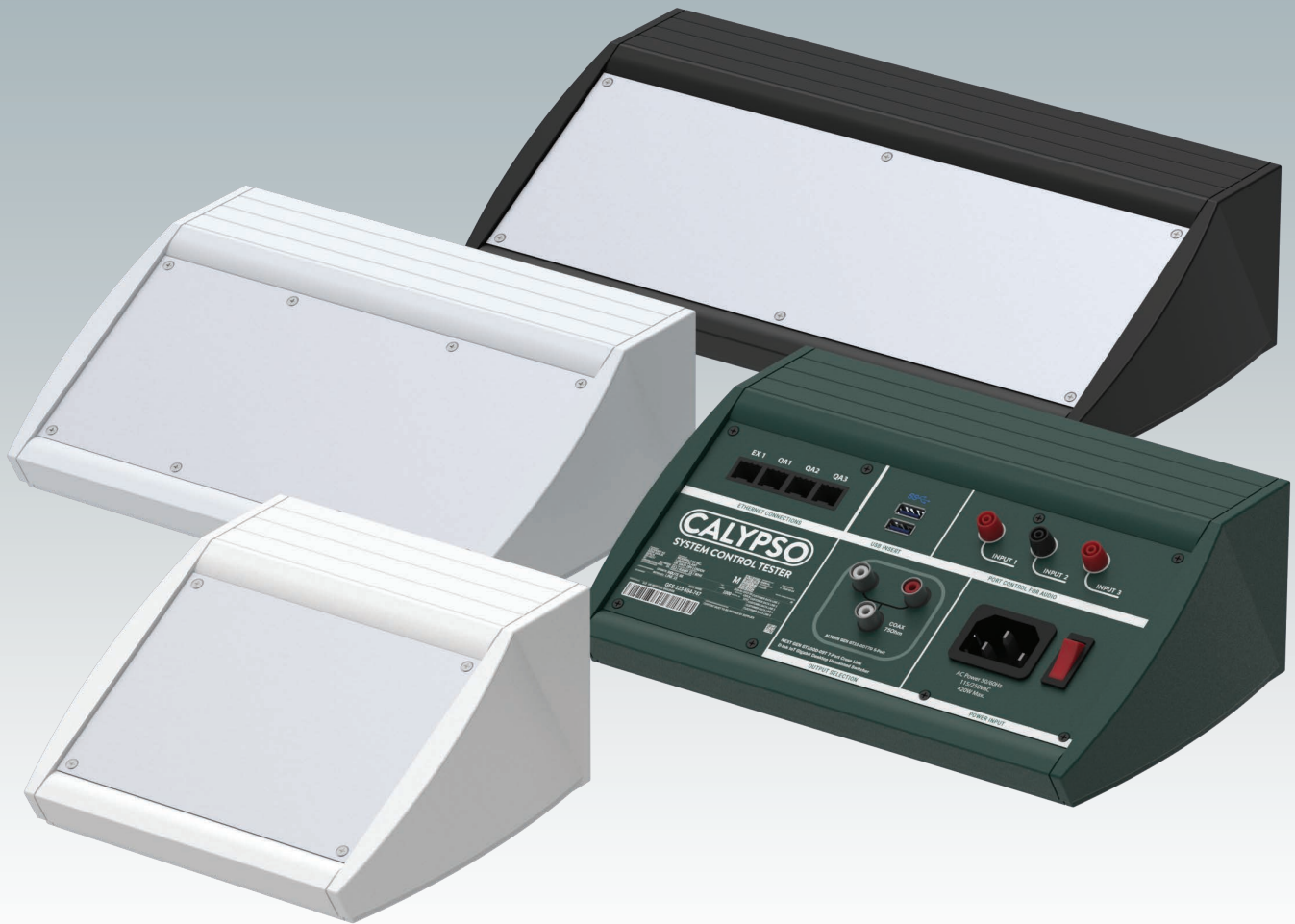


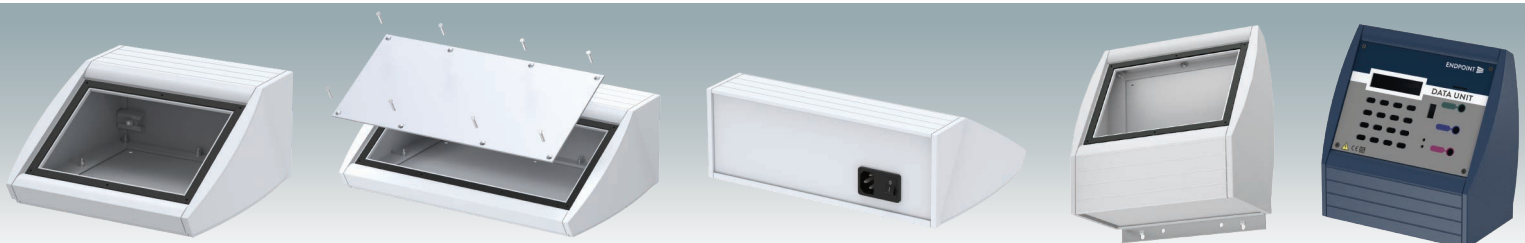
METcase™

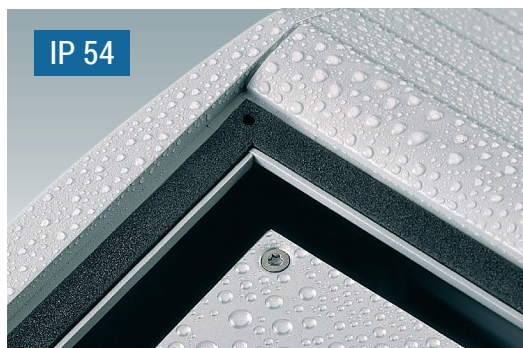
Electronic Enclosures



UNIDESK

Sloping Front
Terminal Enclosures





Robust, IP 54 Rated Sloping Front Terminal Enclosures

Ergonomic aluminum instrument enclosures for desktop and wall mounted electronics equipment. Very robust preassembled design with two diecast end panels, two centre extrusion profiles, and a removable base panel with holes for mounting four PCB pillars (accessories). Offered in three sizes and three standard colors. Optional IP 54 protection class (VDE tested). The rear panel is flat for fitting connectors, switches, power inlets etc. Stainless steel M3 Torx® T10 and MS M3 Pozidriv fixings supplied. Four non-slip rubber feet included. Order your own fully customized version.

Standard colors

Traffic white RAL 9016
Black RAL 9005
Light gray RAL 7035

RAL 9016

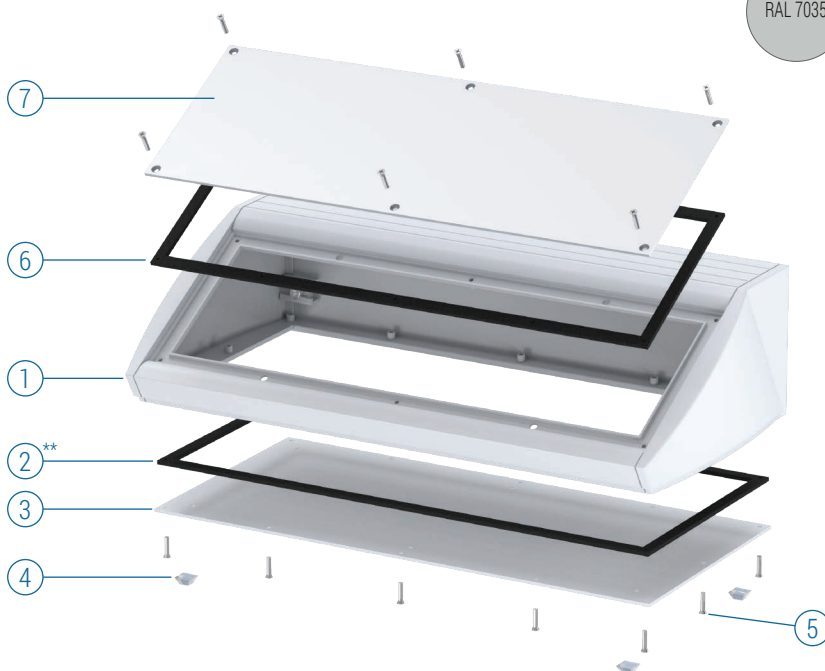
RAL 9005

RAL 7035

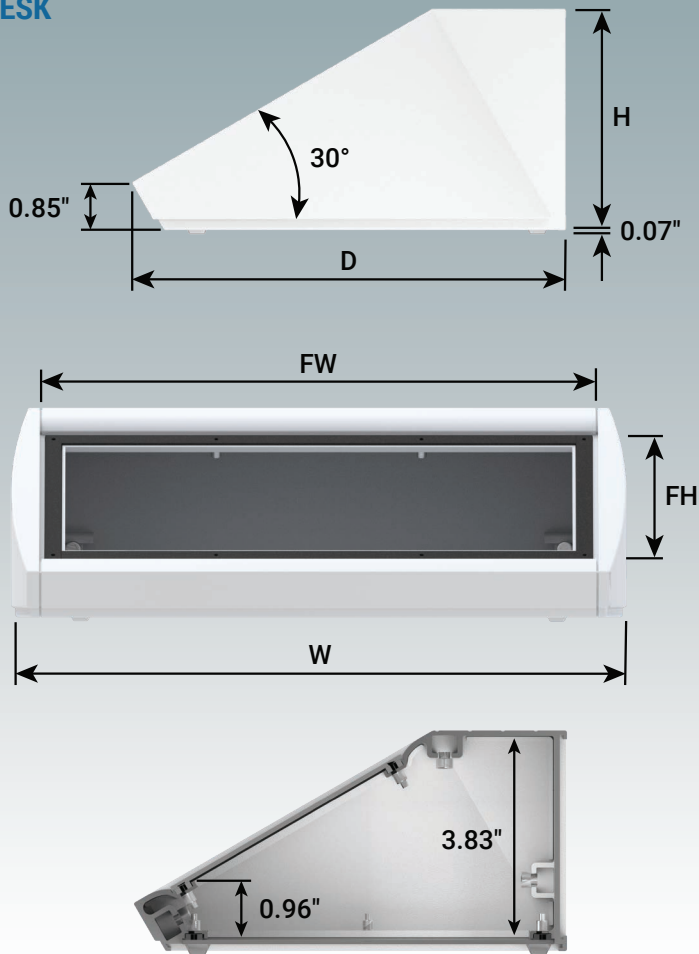
Supply

- ① Aluminum enclosure
- ② **Gasket (x2)
- ③ Base panel
- ④ Rubber foot (x4)
- ⑤ M3 x 12 mm (x20)
M3 x 12 mm T10 (x20)
- ⑥ **Gasket (x2)
- ⑦ *Front panel

* Accessories
** IP 54 version



UNIDESK



RAL 9016



RAL 9005



RAL 7035



UNIDESK WITHOUT SEALING GASKETS

Part No.	Part No.	Part No.	Version	W	H	D	FW Front Panel	FH Front Panel	PCB Width (max.)	PCB Depth (max.)
RAL 9016	RAL 9005	RAL 7035								
M 53 20 116	M 53 20 119	M 53 20 115	M200	7.87"	4.01"	7.87"	6.69"	4.88"	5.70"	5.78"
M 53 30 116	M 53 30 119	M 53 30 115	M300	11.81"	4.01"	7.87"	10.63"	4.88"	9.64"	5.78"
M 53 40 116	M 53 40 119	M 53 40 115	M400	15.74"	4.01"	7.87"	14.56"	4.88"	13.58"	5.78"

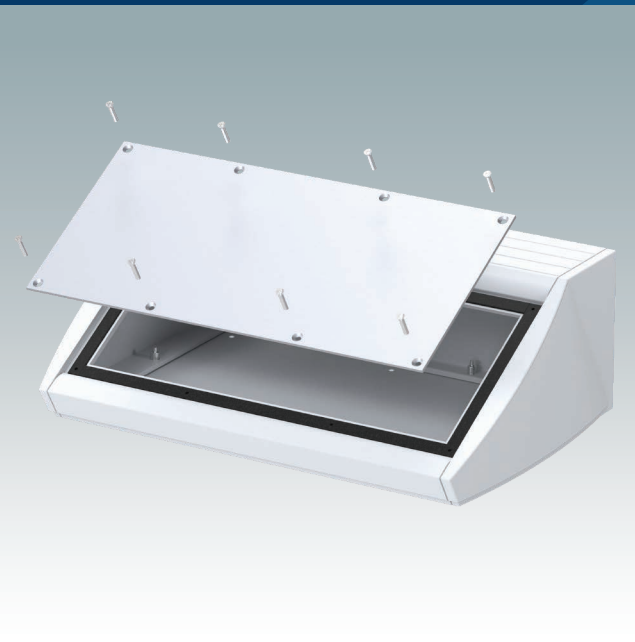
UNIDESK WITH SEALING GASKETS (IP 54)

Part No.	Part No.	Part No.	Version	W	H	D	FW Front Panel	FH Front Panel	PCB Width (max.)	PCB Depth (max.)
RAL 9016	RAL 9005	RAL 7035								
M 53 20 106	M 53 20 109	M 53 20 105	M200	7.87"	4.01"	7.87"	6.69"	4.88"	5.70"	5.78"
M 53 30 106	M 53 30 109	M 53 30 105	M300	11.81"	4.01"	7.87"	10.63"	4.88"	9.64"	5.78"
M 53 40 106	M 53 40 109	M 53 40 105	M400	15.74"	4.01"	7.87"	14.56"	4.88"	13.58"	5.78"

Note: To maintain IP 54, fit PCB pillars M 56 00 001, or use your own rubber plugs, in the base mounting holes.

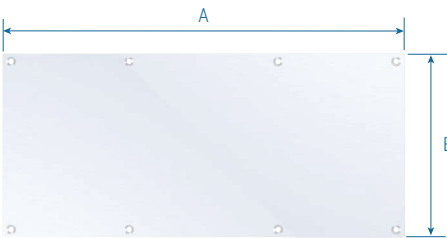
For full 2D drawings and 3D models please see our website.

For front panels and accessories see page 4.



Front Panel Kits

Supply:
1 Panel (2 mm matt anodized aluminum)
Fixing screws are included with the enclosure



Part No.	Version	A	B
M 53 01 502	M200	6.69"	4.84"
M 53 01 503	M300	10.63"	4.84"
M 53 01 504	M400	14.56"	4.84"



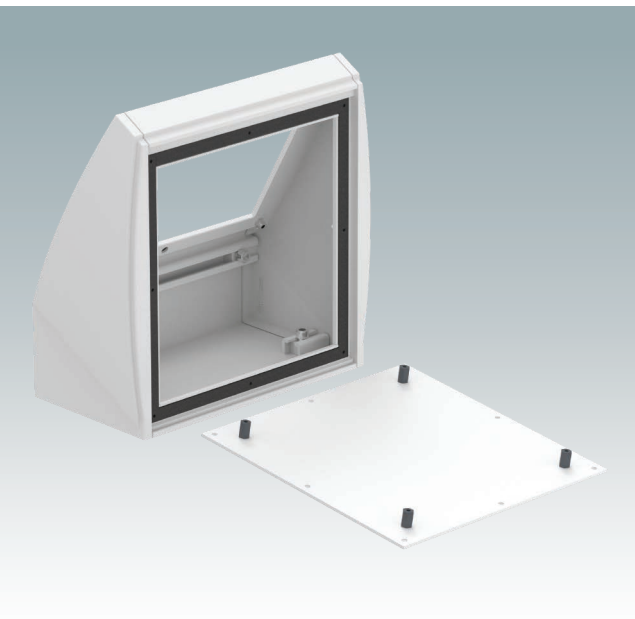
Wall Mounting Kits

This kit allows the UNIDESK to be mounted vertically or horizontally on a wall or other surface. The two extrusion profiles fit into grooves in the rear or underside of the case. The profiles have optional fixing holes to allow for easier adjustment when mounting.

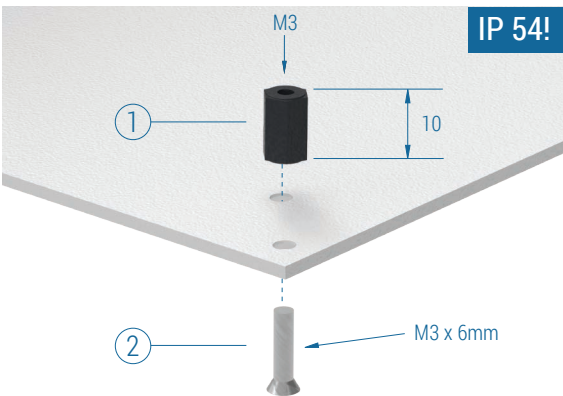
Supply:
2 anodized extrusion profiles



Part No.	Version
M 53 02 212	M200
M 53 02 213	M300
M 53 02 214	M400



PCB Mounting Kits



Part No.	Supply
M 56 00 001	①+② x 10



Order your own customized version

We can supply the UNIDESK enclosures fully customized to your individual technical specifications.

Custom widths can be specified to ensure your PCB assemblies and equipment will fit exactly.

The enclosures and front panels can be machined with holes and cutouts for fitting displays, keypads, HMI touch panels, control buttons and connections.

Other services include adding inserts and screw bosses; custom colors and finishes; digital and silk-screen printing, and engraving.

Having a flexible manufacturing system allows us to offer competitive prices even for small quantities. Do not hesitate to ask us for a quotation.

Our sales team will be very happy to discuss your requirements and help you specify your UNIDESK enclosures exactly as you need them.



METcase™

MANUFACTURER

Metcase Enclosures
A division of:
OKW Enclosures Ltd.
15 Brunel Way
Segensworth East
Fareham, Hampshire
PO15 5TX
United Kingdom

Telephone: +44 (0) 1489 583858
Email: sales@metcase.co.uk
Website: www.metcase.co.uk

© OKW Enclosures Ltd. All rights reserved
Catalog Edition 1.1 – May 2025.
This catalog will be valid until 31/12/2027.
Subject to technical modifications without notice.
Typographical and other errors do not justify any
claim for damages.
Digital Version: 05/2025e

Presented by:



OKW Enclosures, Inc.
3000 Old Pond Road,
Bridgeville, PA 15017
Phone: (412) 220 9244
Toll Free: (800) 965 9872
Email: sales@metcaseusa.com

www.metcaseusa.com