

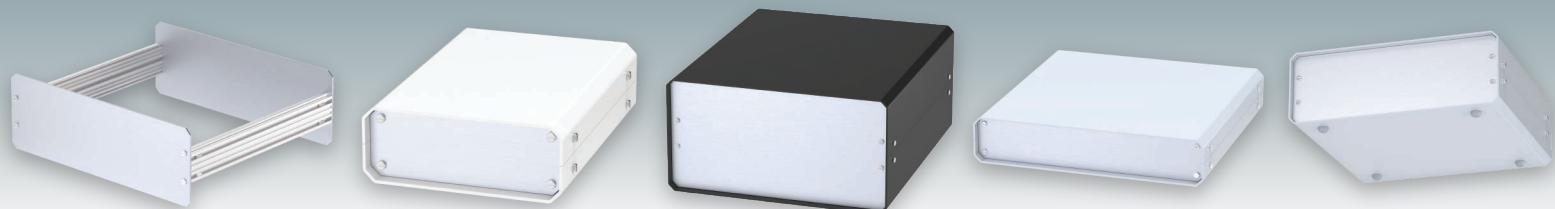
MET case™

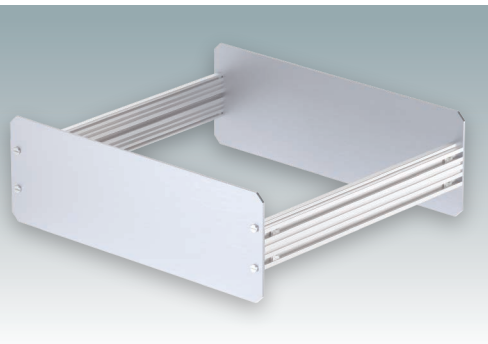
Electronic Enclosures



UNICASE

Universal Instrument
Enclosures



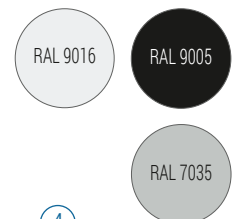


Versatile Instrument Enclosures Ideal For Customizing

Attractive and practical aluminum instrument enclosures. Easily customized to your exact specifications. Ten standard sizes. Simple and fast assembly. Removable internal chassis. PCB guide rails in the assembly extrusions. Anodized aluminum front and rear panels included. Front panels are recessed to protect the controls. Four push-in non-slip rubber feet included. Order your own fully customized version.

Standard colors

Traffic white RAL 9016
Black RAL 9005
Light gray RAL 7035

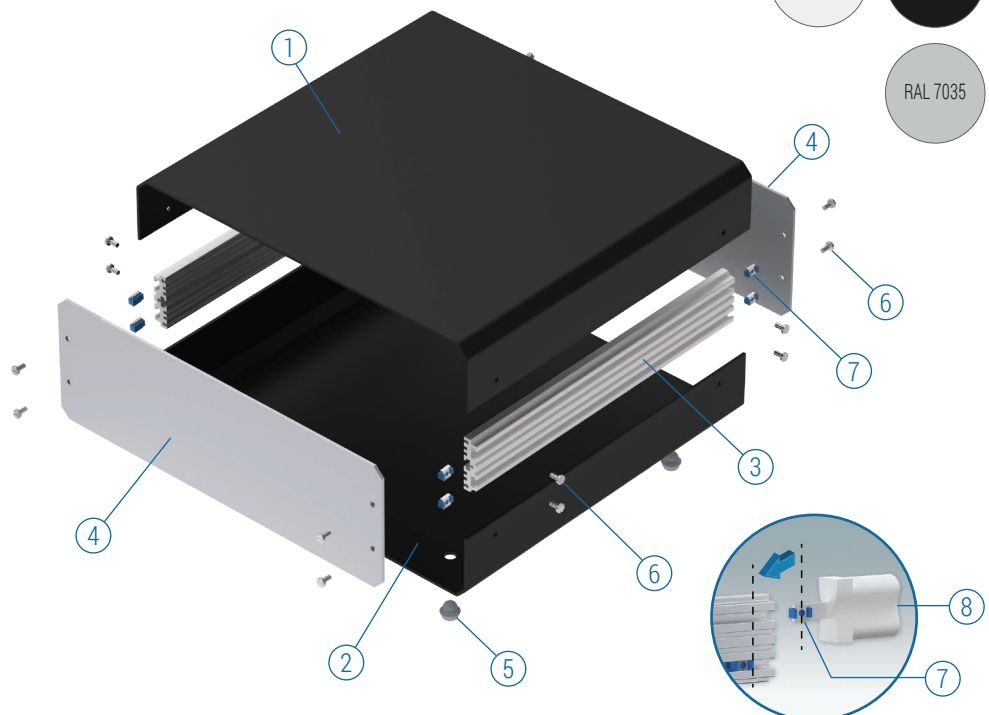


Supply

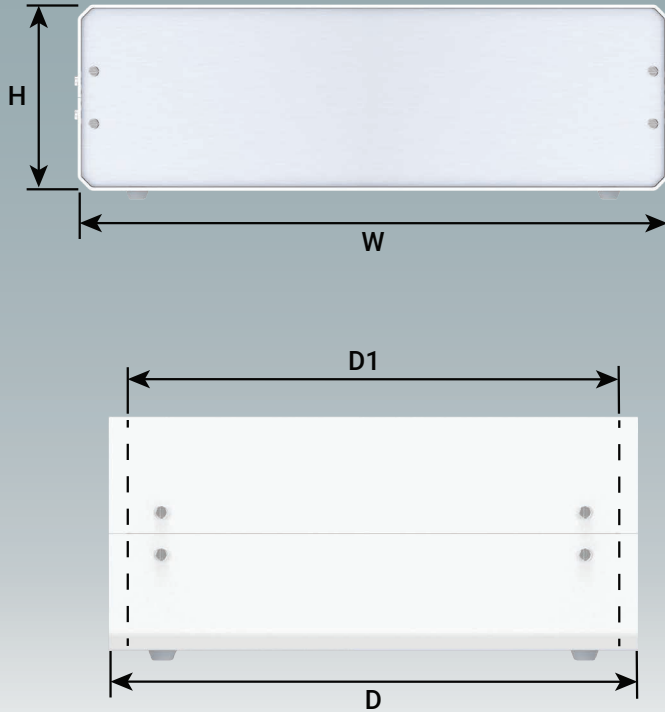
- ① Top cover
- ② Base cover
- ③ Assembly profile (x2)
- ④ Front panel (x2)
- ⑤ Rubber Foot (x4)
- ⑥ M3 x 6 mm (x16)
- ⑦ M3 Captured Nut (x8)
- ⑧ Assembly tool*




Part No. **M55 00 001**

* Accessory



UNICASE

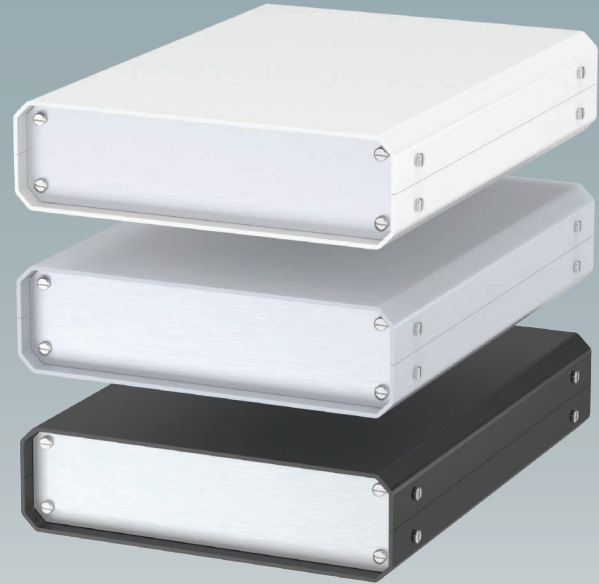
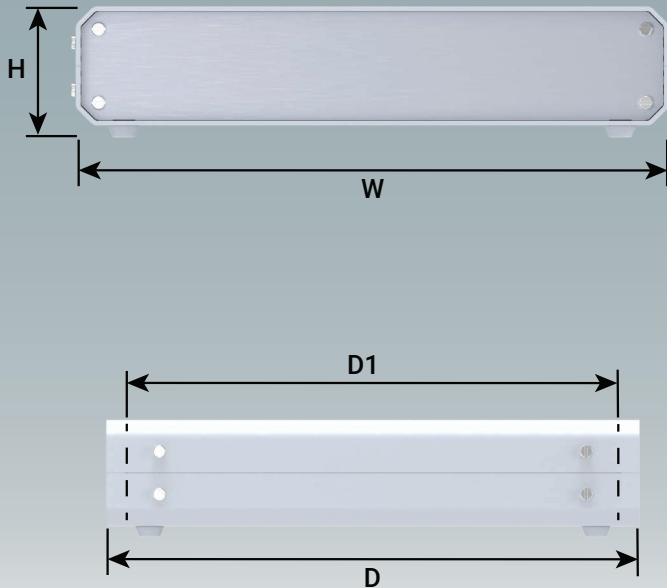





Part No.	Part No.	Part No.	Version	W	H	D	D1	PCB Width (max.)	PCB Depth (max.)	PCB Thickness
RAL 9016 	RAL 9005 	RAL 7035 								
M 55 01 116	M 55 01 119	M 55 01 110	1	7.28"	2.56"	7.09"	6.26"	6.53"	6.26"	0.06"
M 55 02 116	M 55 02 119	M 55 02 110	2	10.23"	3.54"	9.84"	9.01"	9.49"	9.01"	0.06"
M 55 03 116	M 55 03 119	M 55 03 110	3	13.78"	4.33"	9.84"	9.01"	13.03"	9.01"	0.06"
M 55 04 116	M 55 04 119	M 55 04 110	4	10.27"	5.29"	11.81"	10.98"	9.52"	10.98"	0.06"
M 55 05 116	M 55 05 119	M 55 05 110	5	14.45"	5.29"	11.81"	10.98"	13.70"	10.98"	0.06"
M 55 06 116	M 55 06 119	M 55 06 110	6	18.66"	5.29"	11.81"	10.98"	17.91"	10.98"	0.06"

For full 2D drawings and 3D models please see our website.

UNICASE

UNICASE SL



Part No.	Part No.	Part No.	Version	W	H	D	D1	PCB Width (max.)	PCB Depth (max.)	PCB Thickness
RAL 9016 	RAL 9005 	RAL 7035 								
M 55 11 116	M 55 11 119	M 55 11 110	SL1	5.12"	1.96"	7.09"	6.26"	4.37"	6.26"	0.06"
M 55 12 116	M 55 12 119	M 55 12 110	SL2	7.28"	1.96"	9.84"	9.01"	6.53"	9.01"	0.06"
M 55 13 116	M 55 13 119	M 55 13 110	SL3	9.84"	1.96"	9.84"	9.01"	9.09"	9.01"	0.06"
M 55 14 116	M 55 14 119	M 55 14 110	SL4	9.84"	1.96"	11.81"	10.98"	9.09"	10.98"	0.06"

For full 2D drawings and 3D models please see our website.



Order your own customized version

We can supply the UNICASE enclosures fully customized to your individual technical specifications.

All external dimensions – height, width and depth – can be modified to ensure your PCB assemblies and equipment will fit exactly.

The enclosures and front panels can be machined with holes and cutouts for fitting displays, keypads, HMI touch panels, control buttons and connections.

Other services include adding inserts and screw bosses; custom colors and finishes; digital and silk-screen printing and engraving.

Having a flexible manufacturing system allows us to offer competitive prices even for small quantities. Do not hesitate to ask us for a quotation.

Our sales team will be very happy to discuss your requirements and help you specify your UNICASE enclosures exactly as you need them.



METcase™

MANUFACTURER

Metcase Enclosures
A division of:
OKW Enclosures Ltd.
15 Brunel Way
Segensworth East
Fareham, Hampshire
PO15 5TX
United Kingdom

Telephone: +44 (0) 1489 583858
Email: sales@metcase.co.uk
Website: www.metcase.co.uk

© OKW Enclosures Ltd. All rights reserved
Catalogue Edition 1.1 – March 2025.
This catalog will be valid until 31/12/2027.
Subject to technical modifications without notice.
Typographical and other errors do not justify any
claim for damages.
Digital Version: 03/2025e

Presented by:



OKW Enclosures, Inc.
3000 Old Pond Road,
Bridgeville, PA 15017
Phone: (412) 220 9244
Toll Free: (800) 965 9872
Email: sales@metcaseusa.com

www.metcaseusa.com