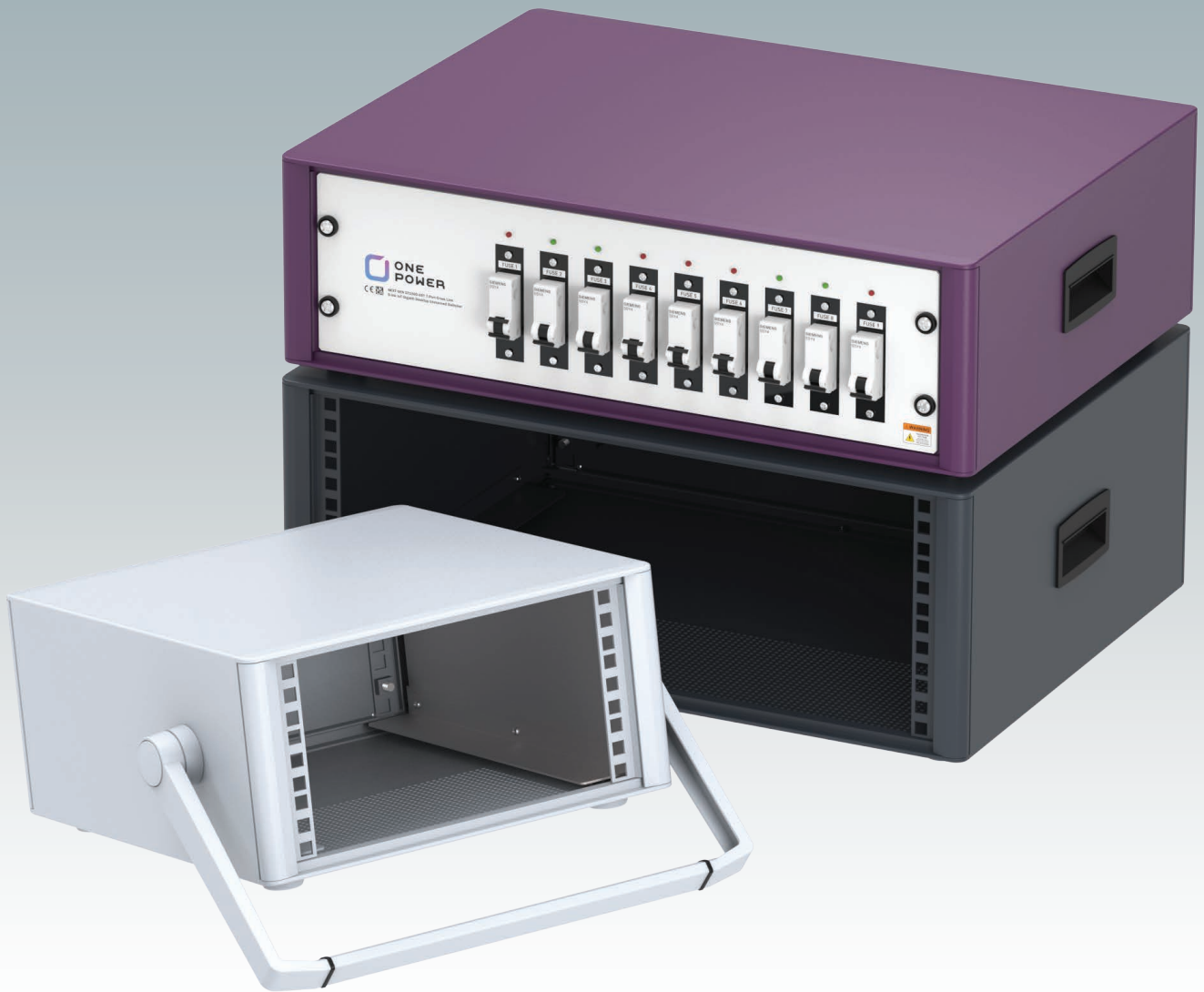


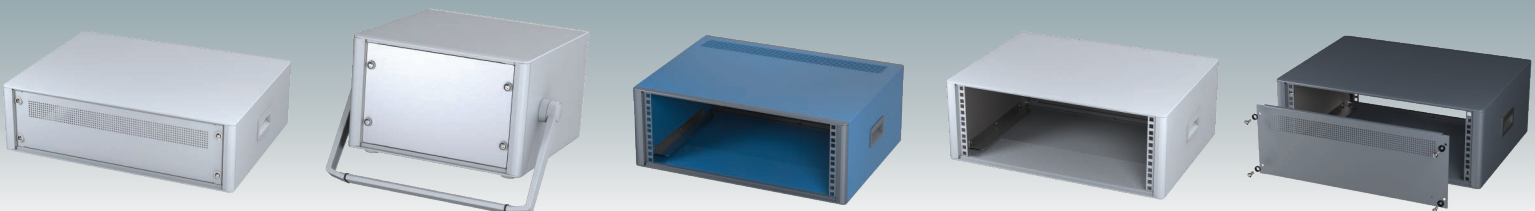
# METcase™

Electronic Enclosures

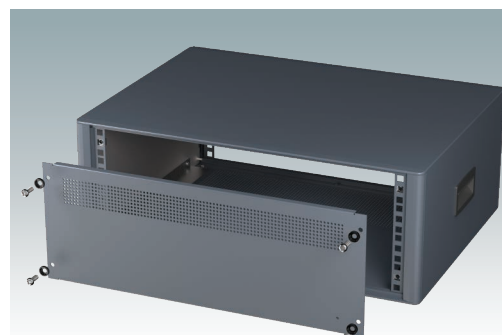


## TECHNOMET 19"

Modern Desktop Mini-Rack  
Enclosures 19"/10.5"  
DIN 41494 | IEC 60297-3



# TECHNOMET 19"

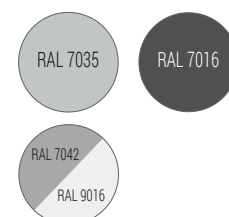


## Modern Mini-Rack Enclosures For 19"/10.5" Electronics Equipment

Highly attractive mini-rack enclosures for tabletop and portable systems. Designed to accept standard 19"/10.5" wide subracks, chassis and front panels. Conforms to DIN 41494 and IEC 60297-3. Robust yet lightweight aluminum construction. Diecast front/rear bezels fit flush with the case body for a smooth appearance. Supplied with two ABS side handles or a bail arm for easy carrying. Internal subrack/chassis support rails included. Ventilation holes in the base and the removable rear panel provide cooling. All case panels supplied with M4 threaded pillars for earth connections. Four ABS non-slip feet fitted to the base. Order your own fully customized version.

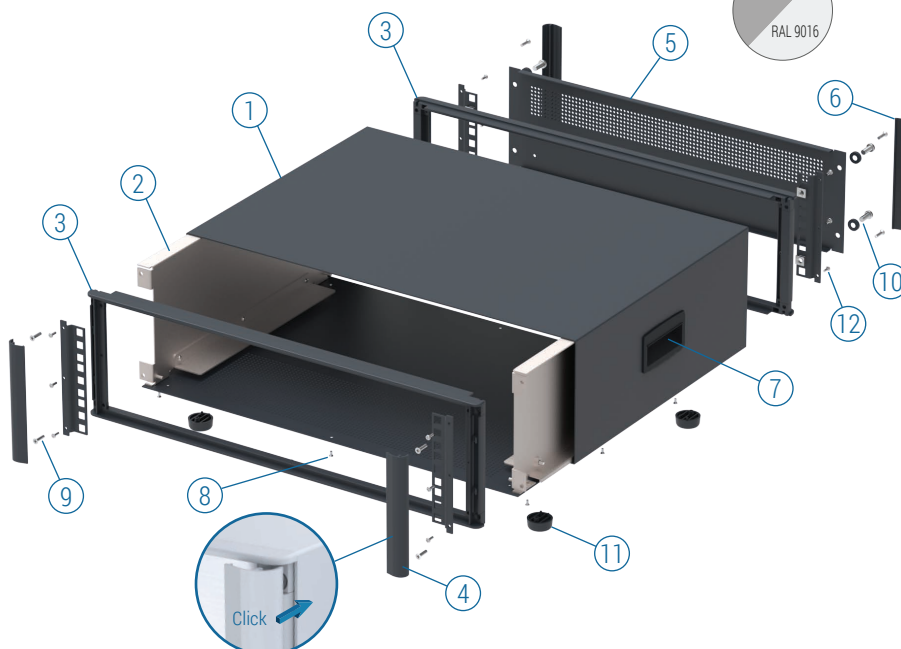
## Standard colors

Light gray RAL 7035  
Antracite RAL 7016  
Traffic white RAL 9016  
Traffic gray A RAL 7042

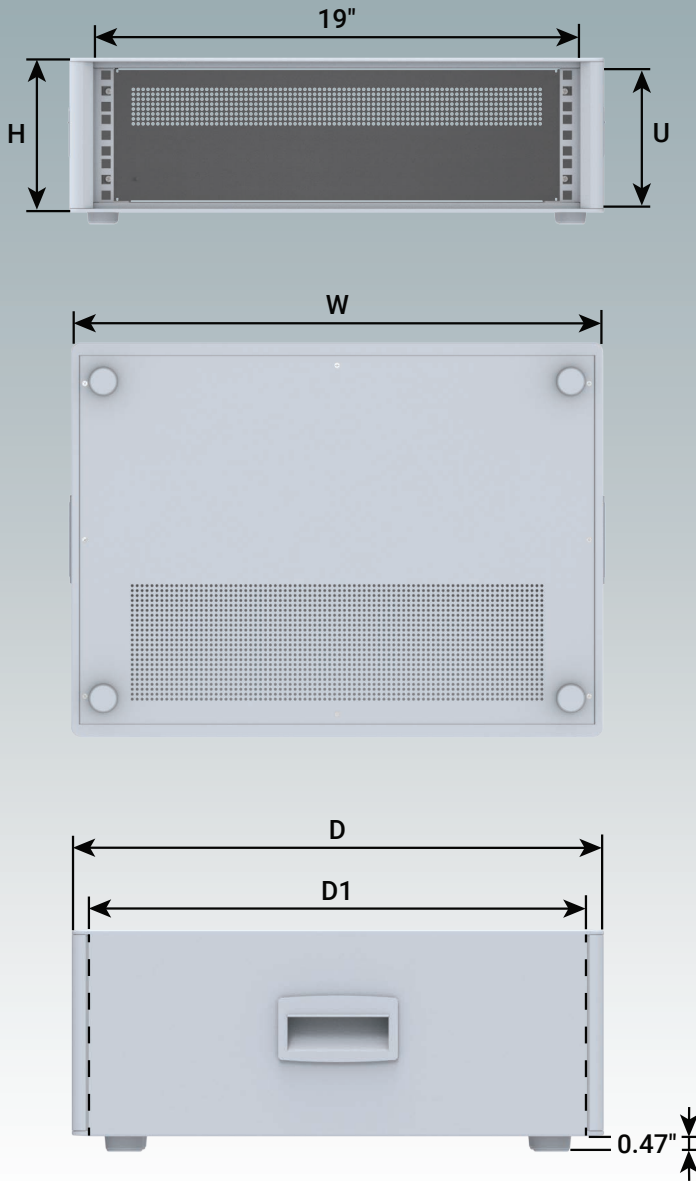


## Supply

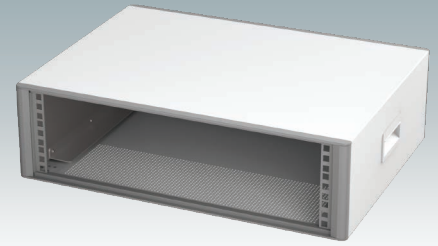
- ① Top cover
- ② Base/chassis
- ③ Front bezel (x2)
- ④ Front trim (x2)
- ⑤ Rear panel
- ⑥ Rear trim (x2)
- ⑦ Side handle (x2)
- ⑧ M3 x 6 mm (x2)
- ⑨ M4 x 16 mm (x8)
- ⑩ M6 x 16mm (x4)
- ⑪ ABS feet
- ⑫ M3 x 8mm (x12)



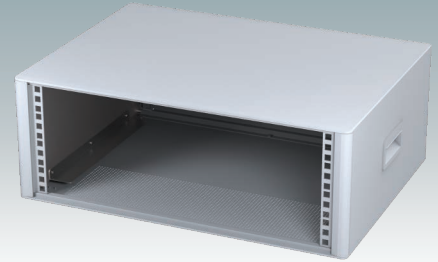
## TECHNOMET 19"



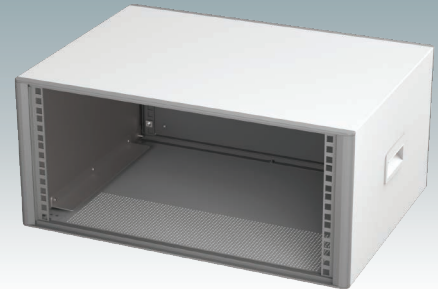
3U



4U






5U



6U



## 19" CASE WITH SIDE HANDLES

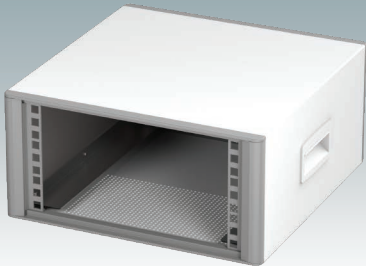
Part No.	Part No.	Part No.	Version	U	H	W	D	D1
RAL 7042/9016 	RAL 7016 	RAL 7035 						
<b>M 66 19 346</b>	<b>M 66 19 344</b>	<b>M 66 19 345</b>	RC193	3U	6.12"	21.21"	15.74"	14.88"
<b>M 66 19 446</b>	<b>M 66 19 444</b>	<b>M 66 19 445</b>	RC194	4U	7.87"	21.21"	15.74"	14.88"
<b>M 66 19 546</b>	<b>M 66 19 544</b>	<b>M 66 19 545</b>	RC195	5U	9.63"	21.21"	15.74"	14.88"
<b>M 66 19 646</b>	<b>M 66 19 644</b>	<b>M 66 19 645</b>	RC196	6U	11.37"	21.21"	15.74"	14.88"

For full 2D drawings and 3D models please see our website.

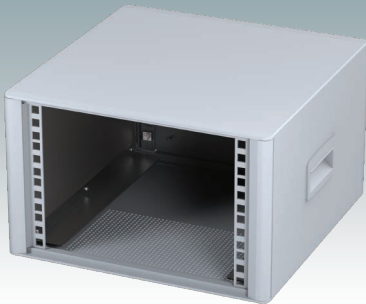
For front panels and accessories see page 5.

# TECHNOMET 19"

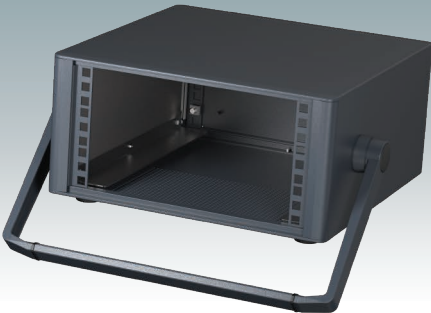
3U



4U



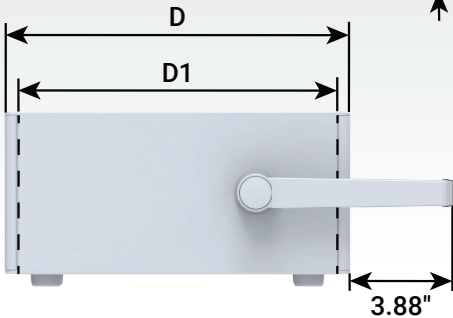
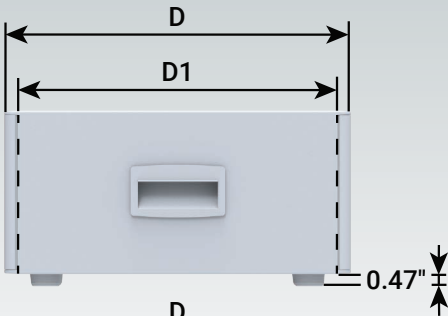
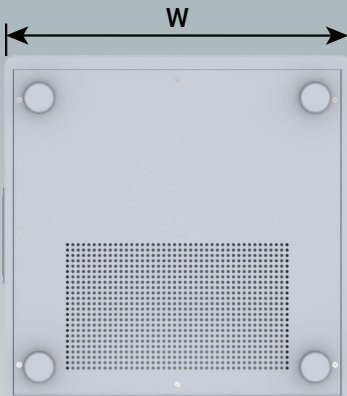
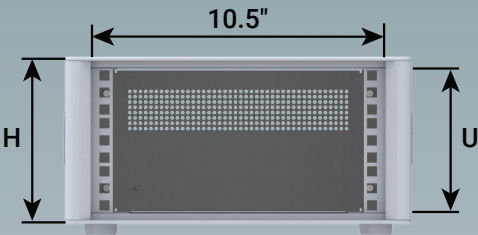
3U



4U



## TECHNOMET 10.5"



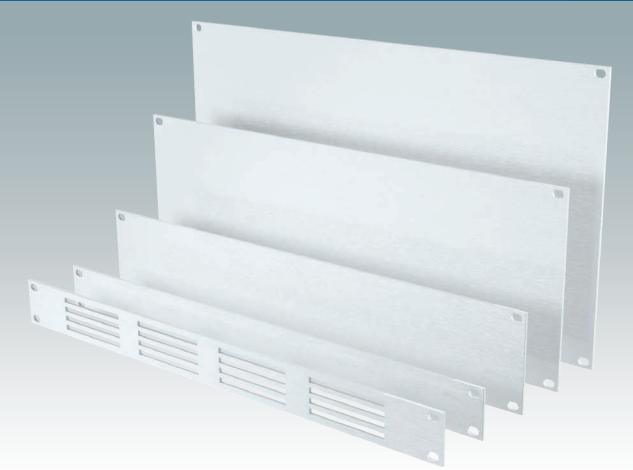
### 10.5" CASE WITH SIDE HANDLES

Part No.	Part No.	Part No.	Version	U	H	W	D	D1
RAL 7042/9016	RAL 7016	RAL 7035						
M 66 10 346	M 66 10 344	M 66 10 345	RC103	3U	6.12"	12.71"	12.99"	12.12"
M 66 10 446	M 66 10 444	M 66 10 445	RC104	4U	7.87"	12.71"	12.99"	12.12"

### 10.5" CASE WITH BAIL ARM

Part No.	Part No.	Part No.	Version	U	H	W	D	D1
RAL 7042/9016	RAL 7016	RAL 7035						
M 66 10 356	M 66 10 354	M 66 10 355	RC103H	3U	6.12"	12.71"	12.99"	12.12"
M 66 10 456	M 66 10 454	M 66 10 455	RC104H	4U	7.87"	12.71"	12.99"	12.12"





## 10.5"/19" Front Panels

### Supply:

1 panel (3 mm matt anodized aluminum)

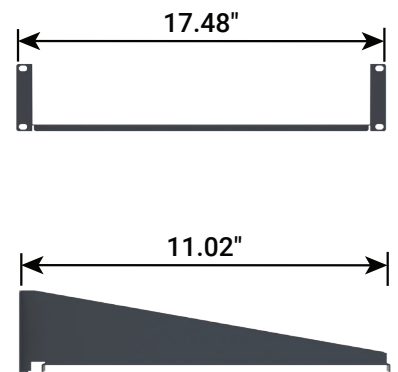
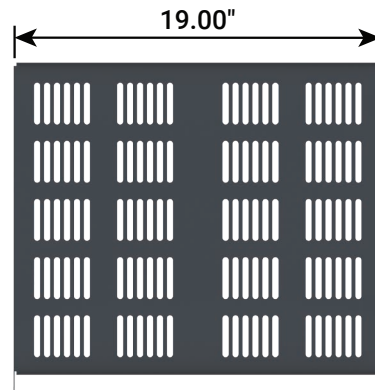
Part No.	Version	H	Ventilated
M 60 10 001	10.5"	3U	
M 60 10 040	10.5"	4U	
M 60 19 010	19"	1U	
M 60 19 011	19"	1U	●
M 60 19 020	19"	2U	
M 60 19 001	19"	3U	
M 60 19 040	19"	4U	
M 60 19 050	19"	5U	
M 60 19 060	19"	6U	



## 19" Cantilever Rack Shelves

**Material:** Mild steel CR4

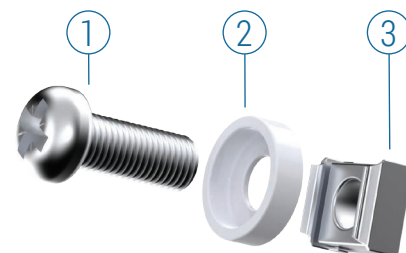
**Supply:** 1 shelf



Part No.	H	D	Color
M 61 19 265	2U	11.02"	○ RAL 7035
M 61 19 264	2U	11.02"	● RAL 7016



## 19" Mounting Kit



Part No.	Supply	Color
M 60 00 035	①+②+③ x 4	○ RAL 7035 ②
M 59 00 016	①+②+③ x 4	● RAL 9005 ②
M 59 00 018	①+②+③ x 4	● RAL 9005 ①②

# TECHNOMET 19" | CUSTOMIZED VERSIONS



## Order your own customized version

We can supply the TECHNOMET 19"/10.5" enclosures fully customized to your individual technical specifications.

All external dimensions – height, width and depth – can be modified to ensure your assemblies and equipment will fit exactly.

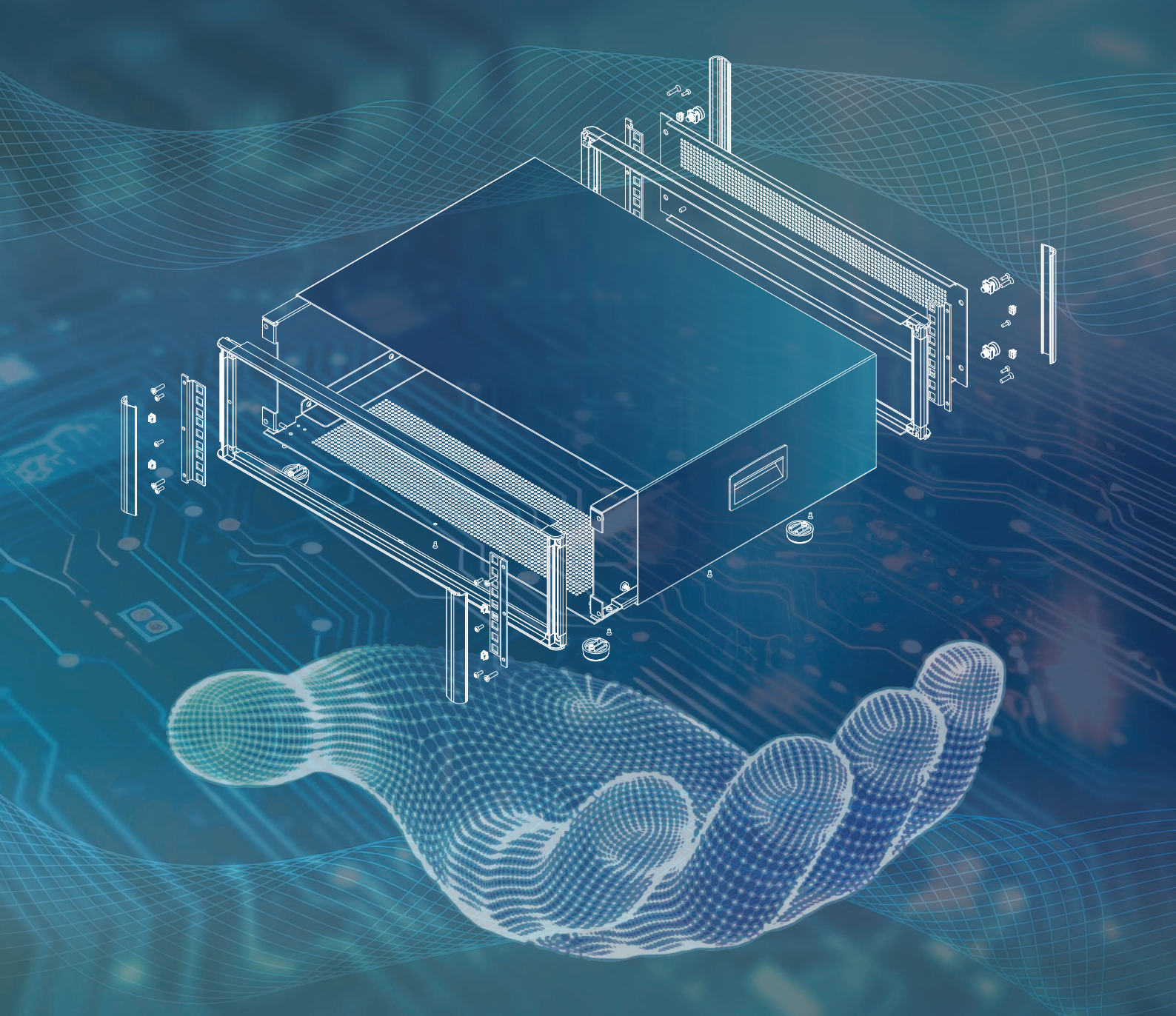
The enclosures and front panels can be machined with holes and cutouts for fitting displays, keypads, HMI touch panels, control buttons and connections.

Other services include adding inserts and screw bosses; custom colors and finishes; digital and silk-screen printing and engraving.

Having a flexible manufacturing system allows us to offer competitive prices even for small quantities. Do not hesitate to ask us for a quotation.

Our sales team will be very happy to discuss your requirements and help you specify your TECHNOMET 19"/10.5" enclosures exactly as you need them.





# METcase™

## MANUFACTURER

Metcase Enclosures  
A division of:  
OKW Enclosures Ltd.  
15 Brunel Way  
Segensworth East  
Fareham, Hampshire  
PO15 5TX  
United Kingdom

Telephone: +44 (0) 1489 583858  
Email: [sales@metcase.co.uk](mailto:sales@metcase.co.uk)  
Website: [www.metcase.co.uk](http://www.metcase.co.uk)

© OKW Enclosures Ltd. All rights reserved  
Catalog Edition 1.1 – September 2025.  
This catalog will be valid until 31/12/2027.  
Subject to technical modifications without notice.  
Typographical and other errors do not justify any  
claim for damages.  
Digital Version: 09/2025e

## Presented by:



**OKW Enclosures, Inc.**  
3000 Old Pond Road,  
Bridgeville, PA 15017  
Phone: (412) 220 9244  
Toll Free: (800) 965 9872  
Email: [sales@metcaseusa.com](mailto:sales@metcaseusa.com)

[www.metcaseusa.com](http://www.metcaseusa.com)