

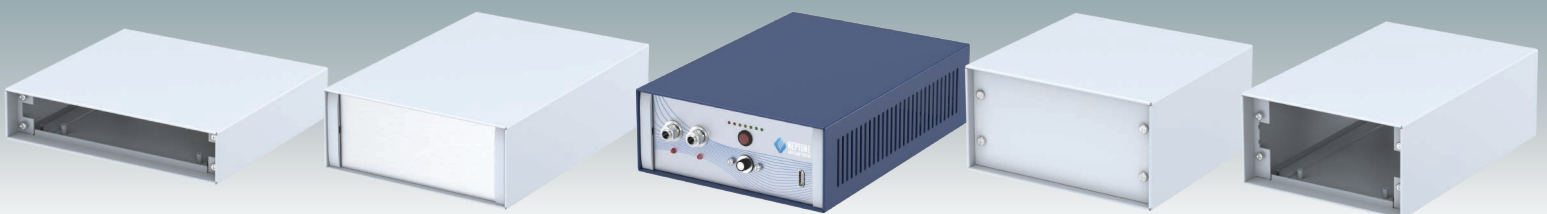
METcase™

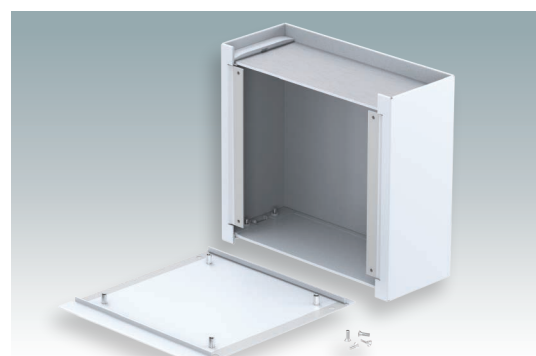
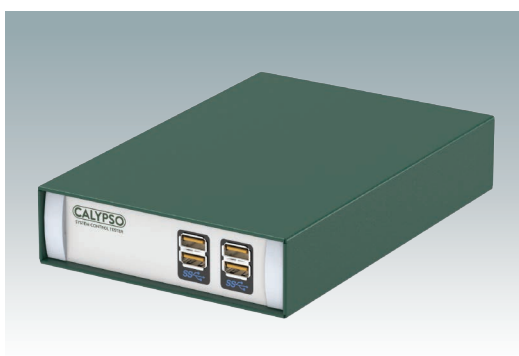
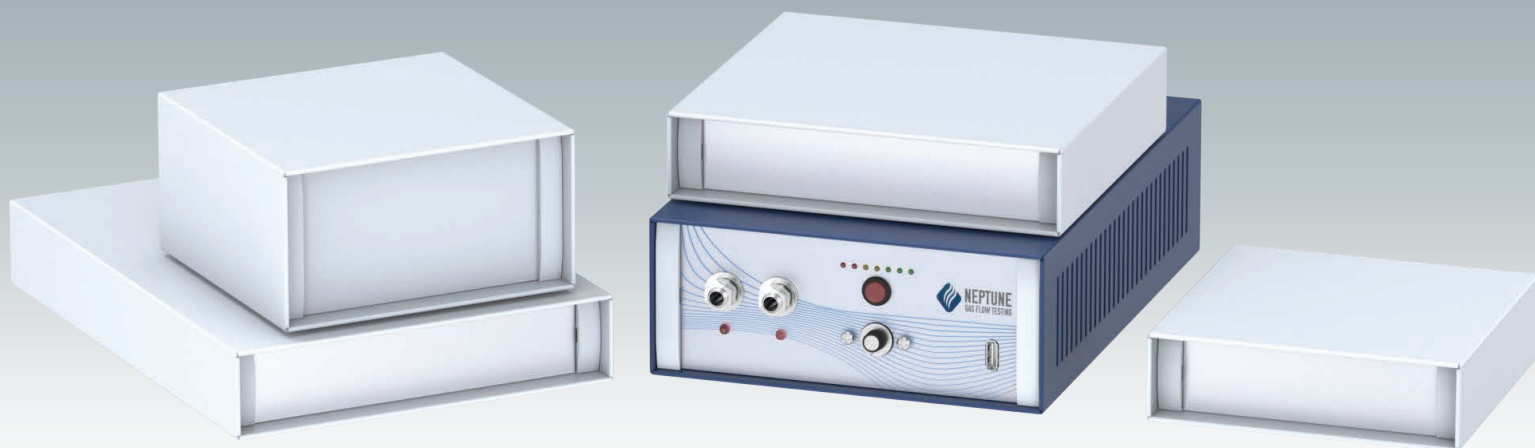
Electronic Enclosures



MINIMET

Compact Instrument
Enclosures





Small electronic instrument enclosures

Compact, stylish aluminum housings designed for small tabletop and portable electronics. Available in eight sizes, they feature quick assembly and a removable base panel with four M3 PCB pillars. Accessory anodized or painted front/rear panels are recessed by 0.315" on one side and 0.551" on the other. Four self-adhesive, non-slip feet are included. Order your own fully customized version.

Standard colors

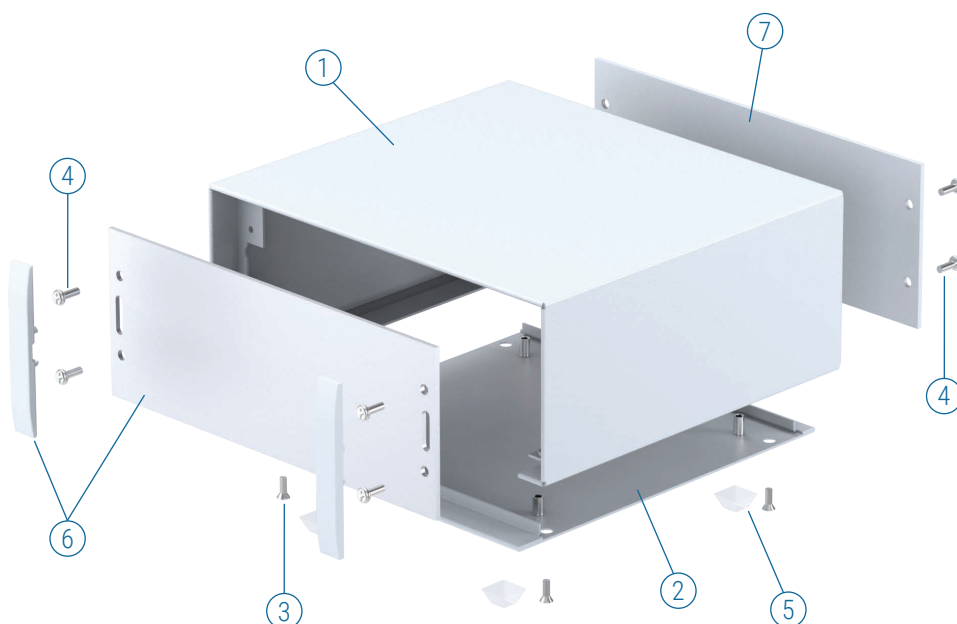
Light gray RAL 7035

RAL 7035

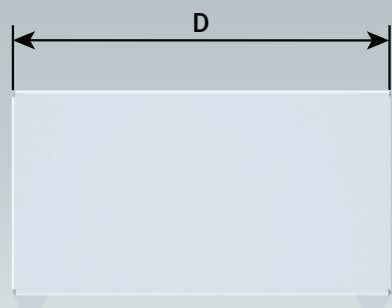
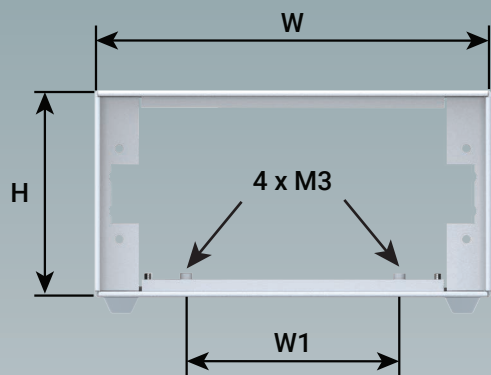
Supply

- ① Top cover
- ② Base panel
- ③ M3 x 6 mm (x4/6)
- ④ M3 x 8 mm (x8)
- ⑤ Rubber foot (x4)
- ⑥ *Front/rear panel kit AN
- ⑦ *Front/rear panel PN

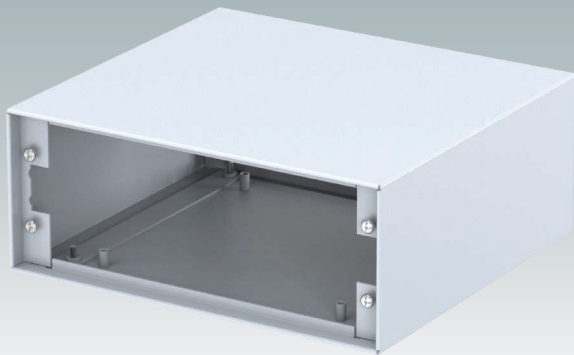
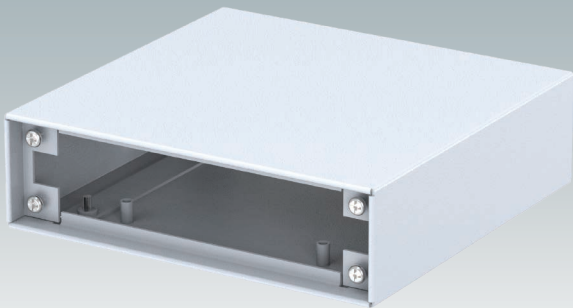
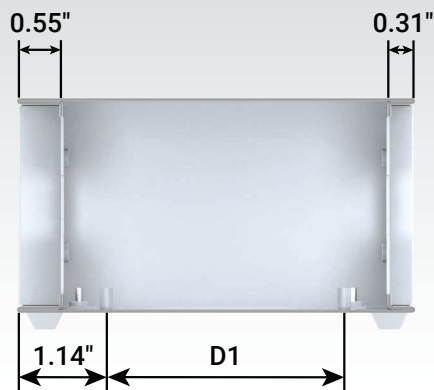
*accessories




MINIMET



SECTION VIEW



MINIMET

Part No.	Version	W	D	H	W1	D1	PCB Width (max.)	PCB Depth (max.)
RAL 7035 								
M 51 13 115	1	5.29"	5.11"	1.51"	2.85"	3.07"	3.46"	4.17"
M 51 13 125	2	5.29"	5.11"	2.75"	2.85"	3.07"	3.46"	4.17"
M 51 13 215	3	5.29"	7.87"	1.51"	2.85"	5.82"	3.46"	6.92"
M 51 13 225	4	5.29"	7.87"	2.75"	2.85"	5.82"	3.46"	6.92"
M 51 17 115	5	6.87"	6.29"	1.51"	4.43"	4.25"	5.03"	5.35"
M 51 17 125	6	6.87"	6.29"	2.75"	4.43"	4.25"	5.03"	5.35"
M 51 17 215	7	6.87"	9.44"	1.51"	4.43"	7.40"	5.03"	8.50"
M 51 17 225	8	6.87"	9.44"	2.75"	4.43"	7.40"	5.03"	8.50"

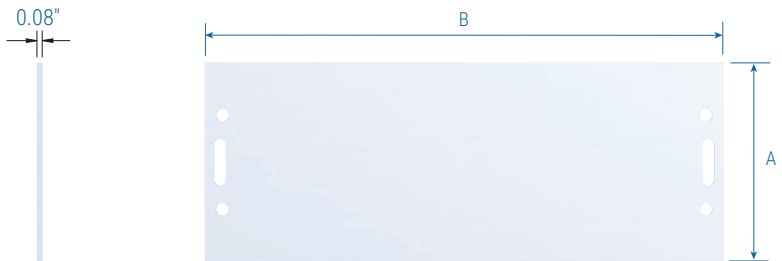
For full 2D drawings and 3D models please see our website.

For front panels see page 4.

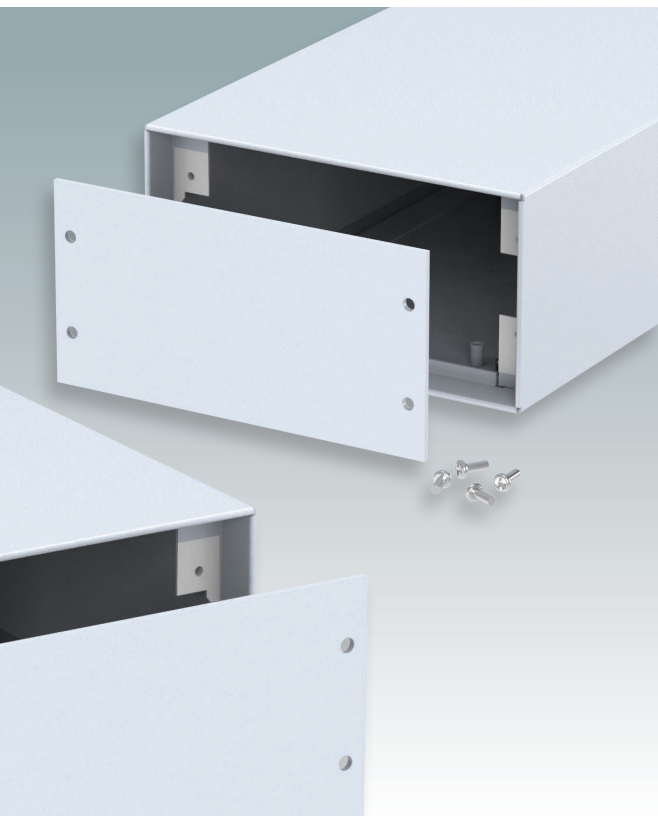


Front/Rear Panel Kit AN

Supply:
1 Panel (Al, matt anodized)
2 Trims (ABS, RAL 7040)

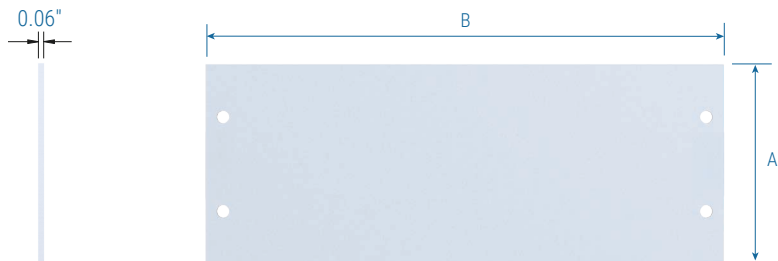


Part No.	Version	A	B
M 51 00 510	1 & 3	1.32"	5.09"
M 51 00 520	2 & 4	2.56"	5.09"
M 51 00 550	5 & 7	1.32"	6.67"
M 51 00 560	6 & 8	2.56"	6.67"

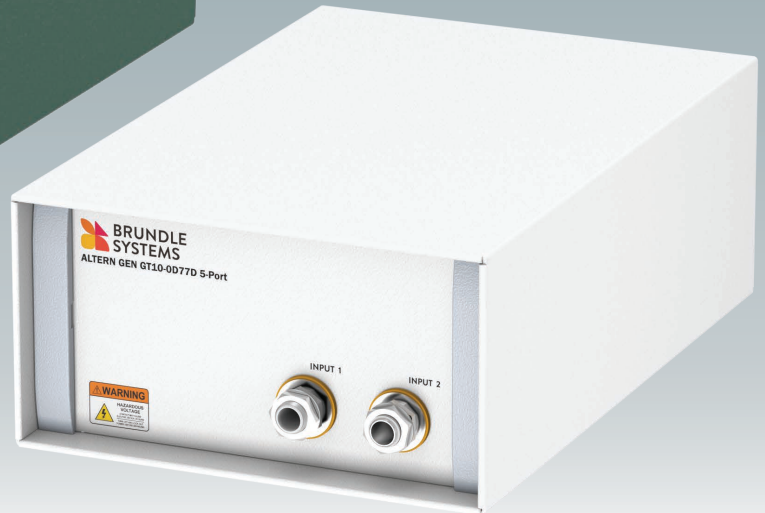


Front/Rear Panel PN

Supply:
1 Panel (Al, painted light gray, RAL 7035)



Part No.	Version	A	B
M 51 00 515	1 & 3	1.32"	5.09"
M 51 00 525	2 & 4	2.56"	5.09"
M 51 00 555	5 & 7	1.32"	6.67"
M 51 00 565	6 & 8	2.56"	6.67"



Order your own customized version

We can supply the MINIMET enclosures fully customized to your individual technical specifications.

External dimensions – width and depth – can be modified to ensure your PCB assemblies and equipment will fit exactly.

The enclosures and front panels can be machined with holes and cutouts for fitting displays, keypads, HMI touch panels, control buttons and connections.

Other services include adding inserts and screw bosses; custom colors and finishes; digital and silk-screen printing, and engraving.

Having a flexible manufacturing system allows us to offer competitive prices even for small quantities. Do not hesitate to ask us for a quotation.

Our sales team will be very happy to discuss your requirements and help you specify your MINIMET enclosures exactly as you need them.





METcase™

MANUFACTURER

Metcase Enclosures
A division of:
OKW Enclosures Ltd.
15 Brunel Way
Segensworth East
Fareham, Hampshire
PO15 5TX
United Kingdom

Telephone: +44 (0) 1489 583858
Email: sales@metcase.co.uk
Website: www.metcase.co.uk

© OKW Enclosures Ltd. All rights reserved
Catalog Edition 1.1 – February 2026.
This catalog will be valid until 31/12/2027.
Subject to technical modifications without notice.
Typographical and other errors do not justify any
claim for damages.
Digital Version: 02/2026e

Presented by:



OKW Enclosures, Inc.
3000 Old Pond Road,
Bridgeville, PA 15017
Phone: (412) 220 9244
Toll Free: (800) 965 9872
Email: sales@metcaseusa.com

www.metcaseusa.com