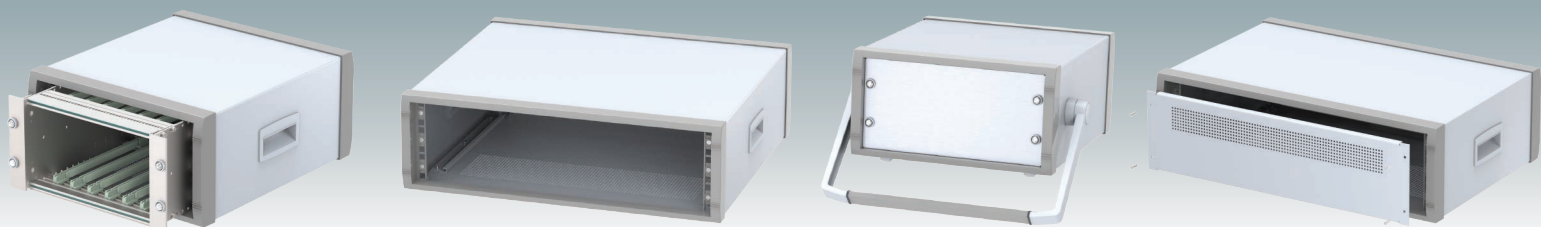


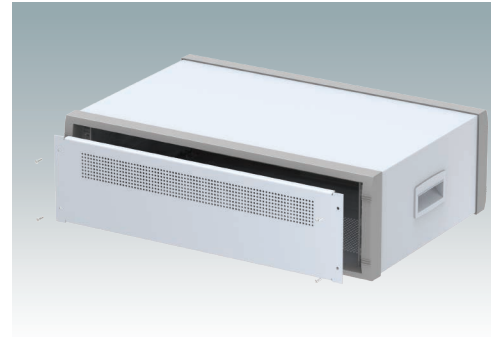
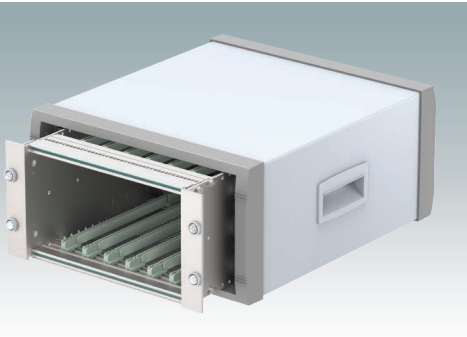
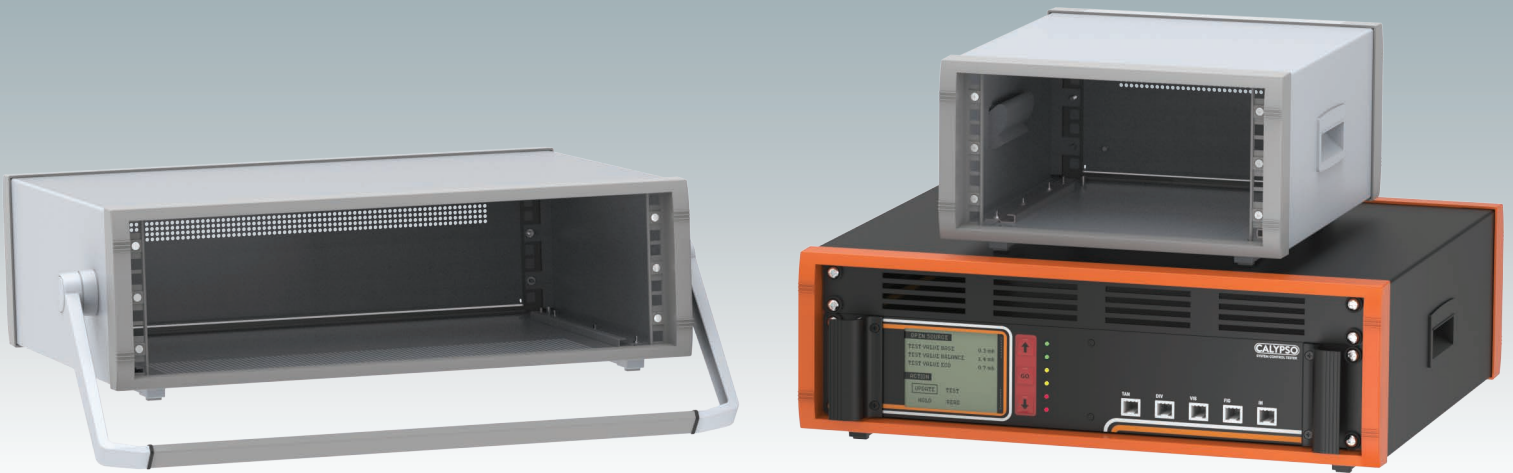


INSTRUMET 19"

Modern Desktop Mini-Rack
Enclosures 19"/10.5"
DIN 41494 | IEC 60297-3



INSTRUMET 19"

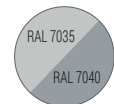


19"/10.5" Mini-Rack Enclosures For Electronics Equipment

Modern aluminum 3U rack enclosures are available in full-width 19" (84HP) or half-width 10.5" (42HP) sizes. All versions conform to DIN 41494 and IEC 60297-3 standards. The design is attractive, featuring diecast front and rear bezels, a removable rear panel and a fabricated case body. Two internal chassis rails provide support for the equipment inside. Ventilation holes are included in the base and rear panel. M4 earth studs are fitted to all panels. Four moulded non-slip ABS feet are attached to the base, including two front tilt legs. Choose from two versions: with two side handles or a tilt/swivel carry handle bar. Contact us to discuss your fully customized version.

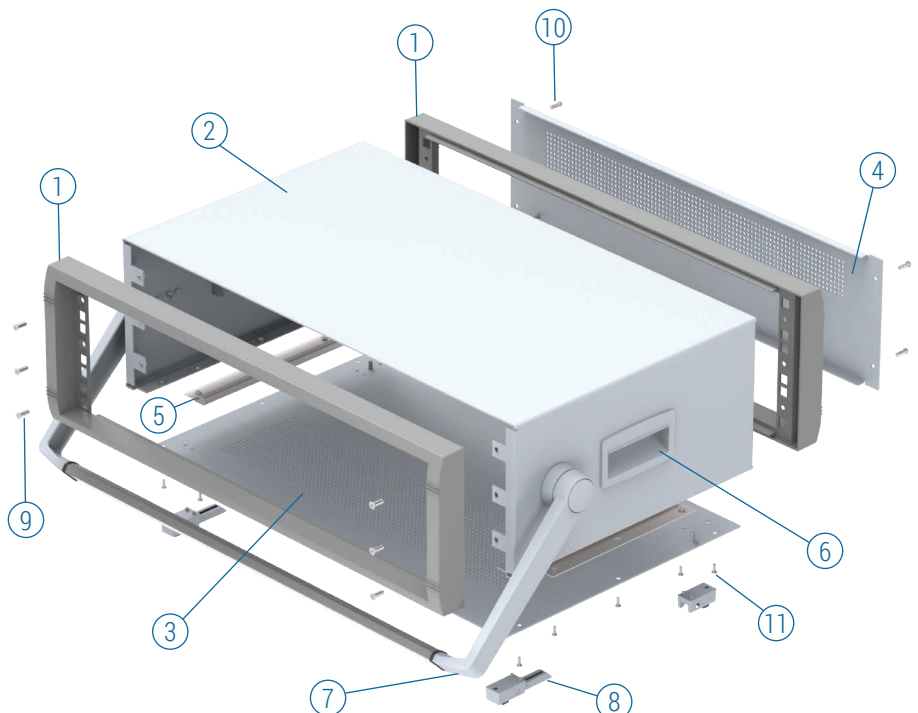
Standard colors

Light gray RAL 7035
Window gray RAL 7040

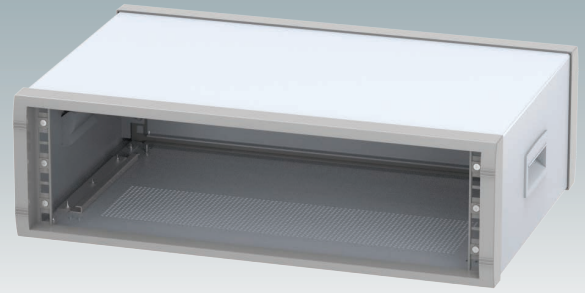
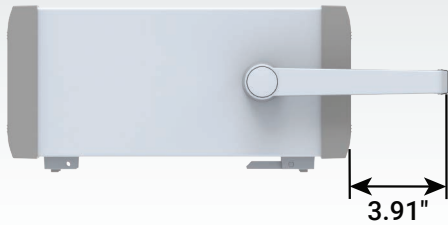
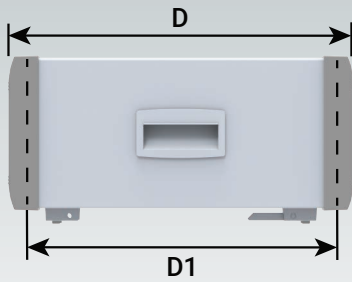
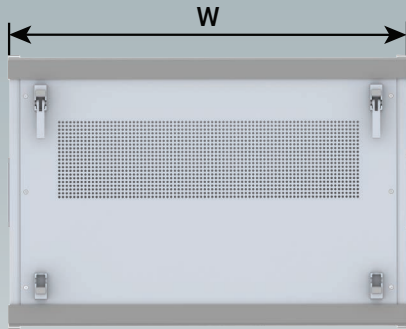
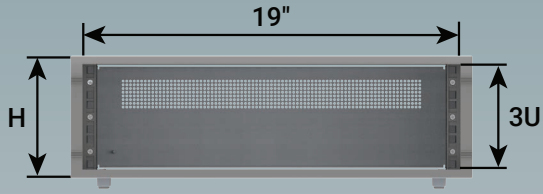


Supply

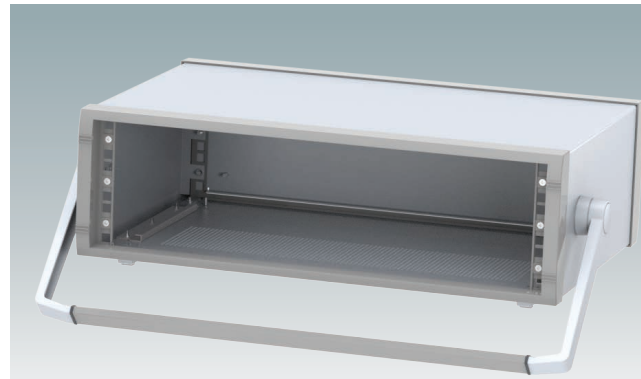
- ① Front/rear bezel (x2)
- ② Top cover
- ③ Base panel
- ④ Rear panel
- ⑤ Chassis support (x2)
- ⑥ ABS side handle (x2)
- ⑦ Tilt/swivel bail arm
- ⑧ ABS tilt feet
- ⑨ M4 x 10 mm (x8)
- ⑩ M4 x 12 mm (x4)
- ⑪ M3 x 8 mm (x10)



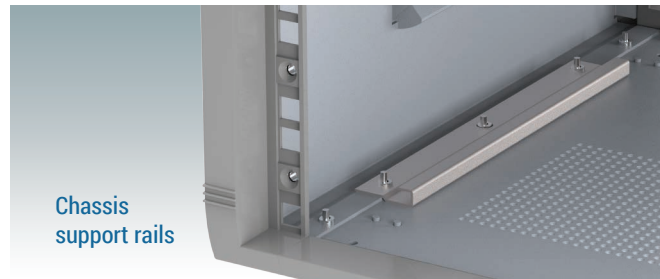
INSTRUMET 19"



With side handles



With bail arm



Chassis support rails

WITH SIDE HANDLES

Part No.	Version	U	H	W	D	D1
M 60 19 305	19"	3U	6.19"	20.32"	13.78"	11.98"
M 60 19 325	19"	3U	6.19"	20.32"	17.71"	15.92"

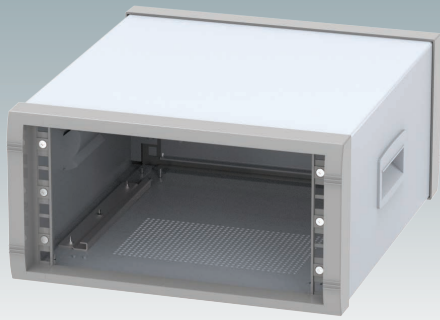
WITH BAIL ARM

Part No.	Version	U	H	W	D	D1
M 60 19 315	19"	3U	6.19"	20.32"	13.78"	11.98"
M 60 19 335	19"	3U	6.19"	20.32"	17.71"	15.92"

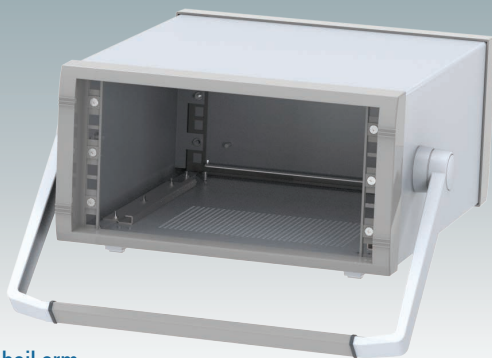
For full 2D drawings and 3D models please see our website.

For front panels and accessories see page 5.

INSTRUMET 19"



With side handles

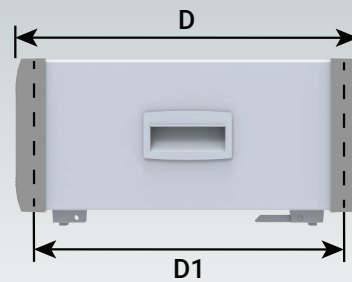
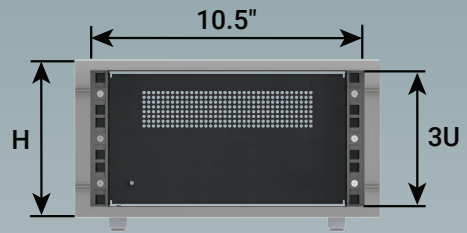


With bail arm



Chassis support rails

INSTRUMET 10.5"



WITH SIDE HANDLES

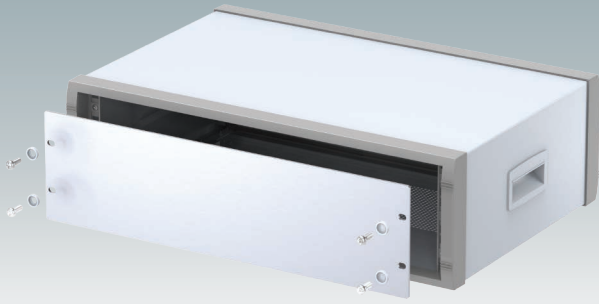
Part No.	Version	U	H	W	D	D1
M 60 10 305	10.5"	3U	6.19"	11.92"	13.78"	11.98"

WITH BAIL ARM

Part No.	Version	U	H	W	D	D1
M 60 10 315	10.5"	3U	6.19"	11.92"	13.78"	11.98"

For full 2D drawings and 3D models please see our website.

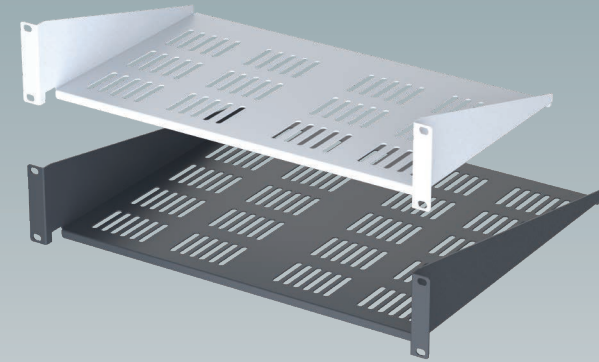
For front panels and accessories see page 5.



10.5"/19" Front Panels

Supply:
1 panel (3 mm matt anodised aluminum)

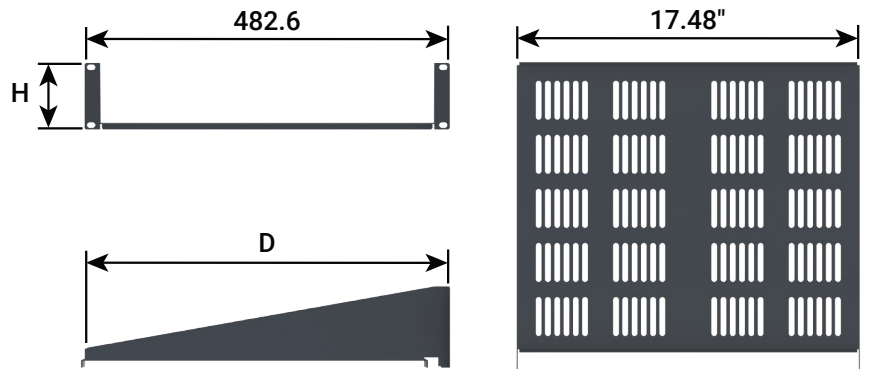
Part No.	Version	H	Ventilated
M 60 10 001	10.5"	3U	
M 60 19 010	19"	1U	
M 60 19 011	19"	1U	●
M 60 19 020	19"	2U	
M 60 19 001	19"	3U	



19" Cantilever Rack Shelves

Material: Mild steel CR4

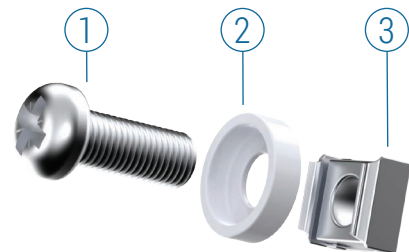
Supply: 1 shelf



Part No.	H	D	Color
M 61 19 265	2U	280	○ RAL 7035
M 61 19 264	2U	280	● RAL 7016
M 61 19 285	2U	400	○ RAL 7035
M 61 19 284	2U	400	● RAL 7016



19" Mounting Kit



Part No.	Supply	Color
M 60 00 035	①+②+③ x 4	○ RAL 7035 ②
M 59 00 016	①+②+③ x 4	● RAL 9005 ②
M 59 00 018	①+②+③ x 4	● RAL 9005 ① ②

INSTRUMET 19" | CUSTOMIZED VERSIONS



Order your own customized version

We can supply the INSTRUMET 19"/10.5" enclosures fully customized to your individual technical specifications.

The external depth dimension can be modified to ensure your assemblies and equipment will fit exactly.

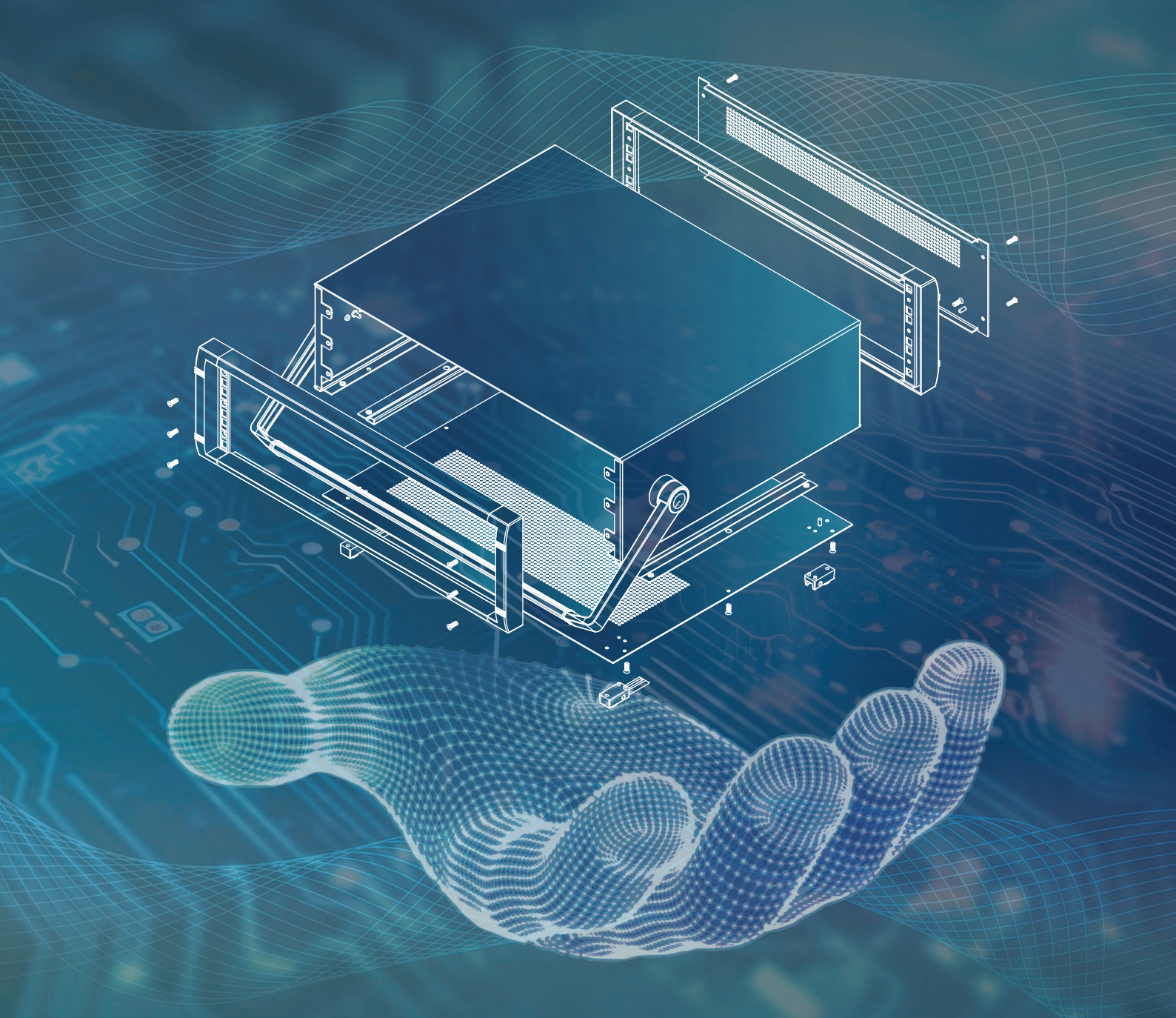
The enclosures and front panels can be machined with holes and cutouts for fitting displays, keypads, HMI touch panels, control buttons and connections.

Other services include adding inserts and screw bosses; custom colors and finishes; digital and silk-screen printing and engraving.

Having a flexible manufacturing system allows us to offer competitive prices even for small quantities. Do not hesitate to ask us for a quotation.

Our sales team will be very happy to discuss your requirements and help you specify your INSTRUMET 19"/10.5" enclosures exactly as you need them.





METcase™

MANUFACTURER

Metcase Enclosures
A division of:
OKW Enclosures Ltd.
15 Brunel Way
Segensworth East
Fareham, Hampshire
PO15 5TX
United Kingdom

Telephone: +44 (0) 1489 583858
Email: sales@metcase.co.uk
Website: www.metcase.co.uk

© OKW Enclosures Ltd. All rights reserved
Catalog Edition 1.1 – July 2025.
This catalog will be valid until 31/12/2027.
Subject to technical modifications without notice.
Typographical and other errors do not justify any
claim for damages.
Digital Version: 07/2025e

Presented by:



OKW Enclosures, Inc.
3000 Old Pond Road,
Bridgeville, PA 15017
Phone: (412) 220 9244
Toll Free: (800) 965 9872
Email: sales@metcaseusa.com

www.metcaseusa.com