

## Fitting assembly fixings to front panels and enclosures

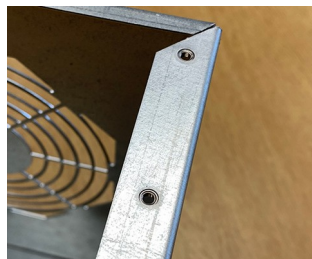
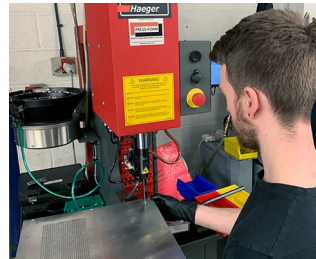
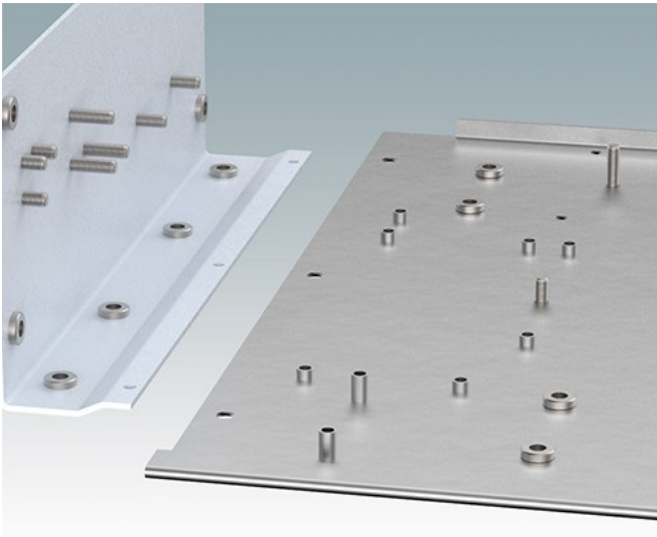
We can fit a wide selection of fixings including threaded inserts and studs on to aluminum and steel enclosure covers and panels. These can be used for mounting your PCBs, connectors, controls and electronic assemblies.

See below for a list of the standard fixings we use. Our engineers will be happy to suggest suitable inserts and fixings to suit your design requirements.

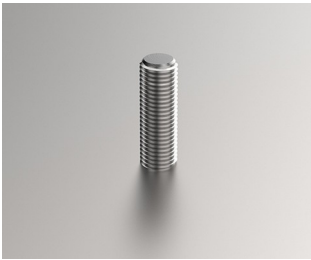
### What we can fit:

- Metric fasteners (unified on request)
- Typically with M2, M2.5, M3, M4, M5 and M6 threads
- Self-clinch nuts, studs, blind standoffs, through standoffs
- PCB Clip-on Standoffs, 90 degree panel nuts, cable tie mounts.
- Earth studs on to aluminium panels and earth tags on to steel panels
- Concealed head threaded studs to avoid any witness on the external surface of the panel.
- As an alternative to inserts, we can also create a burst hole in the sheet material and tap the required thread

**Contact our sales team** for more information and a quotation.



## Select Versions



**M0000700**  
Flush Head Fixing Studs  
Stainless Steel



**M0000701**  
Through Standoffs  
Stainless Steel



**M0000702**  
Blind Standoffs  
Stainless Steel



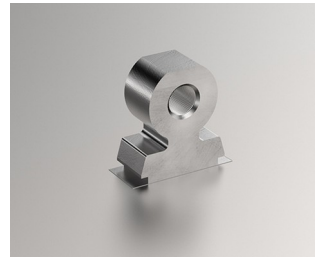
**M0000703**  
Concealed Head Standoffs  
Stainless Steel



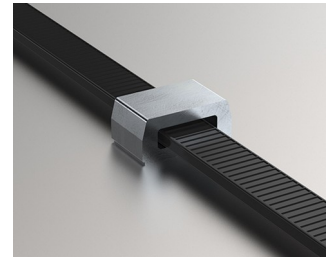
**M0000704**  
PCB Clip-on Standoffs  
Stainless Steel



**M0000720**  
Self-Clinch Nuts  
Steel



**M0000721**  
Right Angle Panel Nuts  
Steel



**M0000730**  
Cable Tie Mounts  
Steel

Subject to technical modification without notice. © OKW Enclosures Ltd