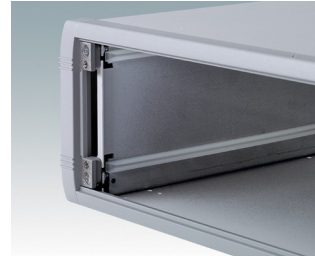
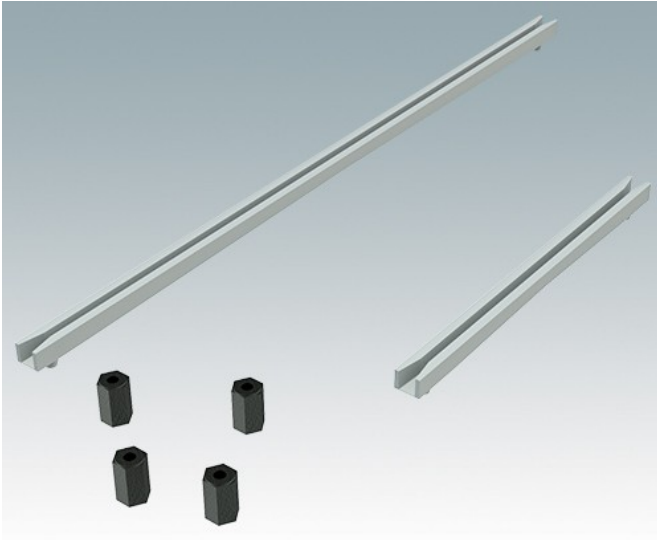
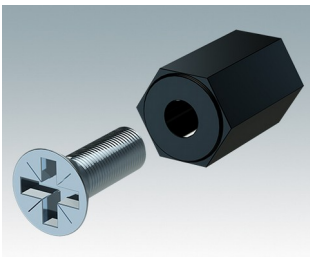


Universal accessories for mounting PCBs in any enclosures

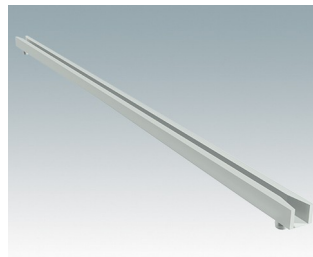
- M3 plastic PCB mounting pillars, 0.39" high
- Snap-in PCB guides for 0.63" (1.6 mm) thick PCBs.



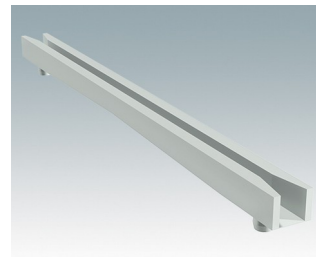
Select Versions



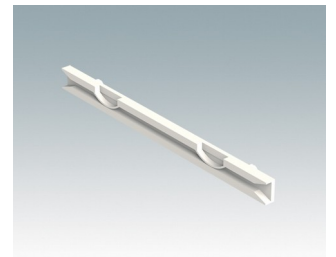
M5600001
PCB mounting kit
PA 6
Black RAL 9005



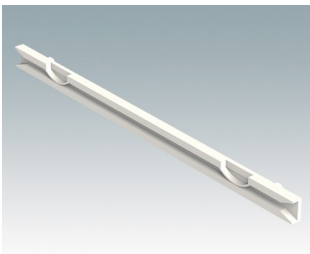
M5700202
PCB guide, 8.50"
PA 6/6 (UL 94 V-2)
White



M5700203
PCB guide, 4.00"
PA 6/6 (UL 94 V-2)
White

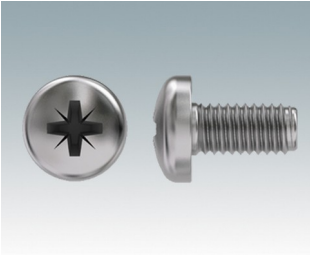


M6490010
PCB Guide, 4.00"
PA 6/6 (UL 94 V-0)
Natural finish
4.00"x0.30"x0.14"



M6490020
PCB Guide, 5.50"
PA 6/6 (UL 94 V-0)
Natural finish
5.50"x0.30"x0.14"

Accessory



M5600010
PCB Fixing Screws, M3
Steel
Zinc coated
0.24"

Subject to technical modification without notice. © OKW Enclosures Ltd