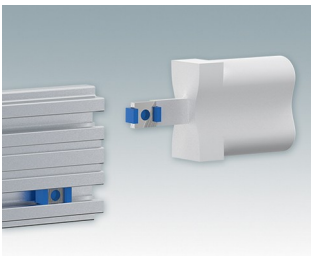
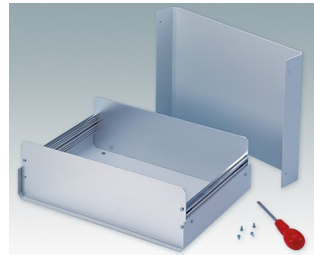
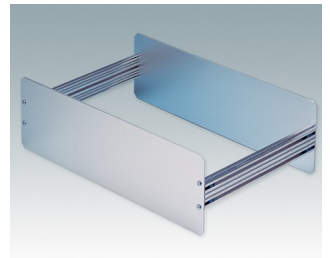


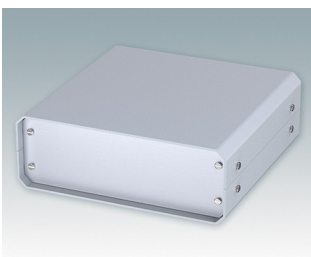
## Versatile design ideal for customizing

- Attractive and practical instrument enclosures with simple and fast assembly
- Easily customized to your exact specifications
- Ten standard sizes available in light gray and black
- Removable internal chassis
- PCB guide rails in the assembly extrusions
- Anodized aluminum front and rear panels included
- Front panels recessed to protect controls
- Four push-in non-slip rubber feet included.

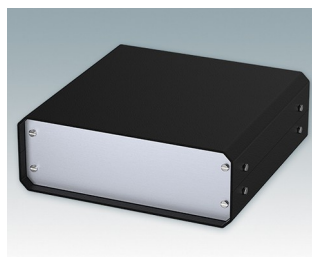
Order your own fully customized version [learn more here >>](#)



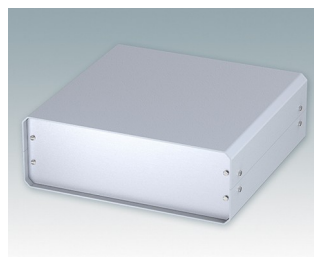
### Select Versions



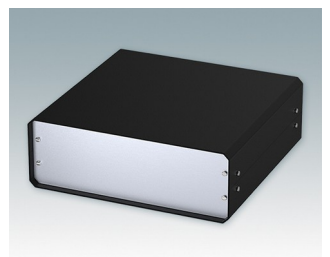
**M5501110**  
UNICASE 1  
Aluminum  
Light gray RAL 7035  
7.28"x7.09"x2.56"



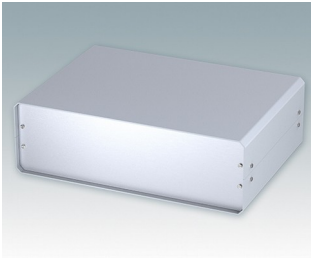
**M5501119**  
UNICASE 1  
Aluminum  
Black RAL 9005  
7.28"x7.09"x2.56"



**M5502110**  
UNICASE 2  
Aluminum  
Light gray RAL 7035  
10.24"x9.84"x3.54"



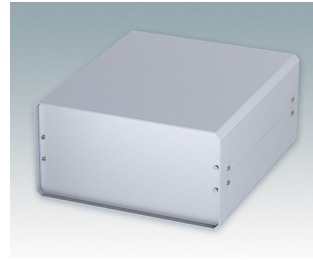
**M5502119**  
UNICASE 2  
Aluminum  
Black RAL 9005  
10.24"x9.84"x3.54"



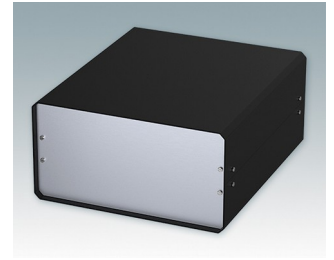
**M5503110**  
UNICASE 3  
Aluminum  
Light gray RAL 7035  
13.78"x9.84"x4.33"



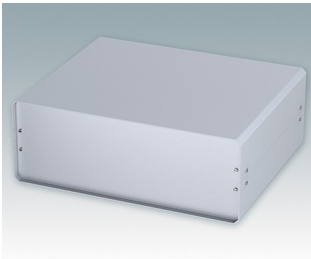
**M5503119**  
UNICASE 3  
Aluminum  
Black RAL 9005  
13.78"x9.84"x4.33"



**M5504110**  
UNICASE 4  
Aluminum  
Light gray RAL 7035  
10.28"x11.81"x5.30"



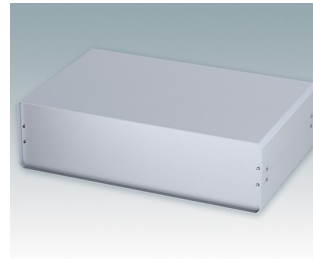
**M5504119**  
UNICASE 4  
Aluminum  
Black RAL 9005  
10.28"x11.81"x5.30"



**M5505110**  
UNICASE 5  
Aluminum  
Light gray RAL 7035  
14.45"x11.81"x5.30"



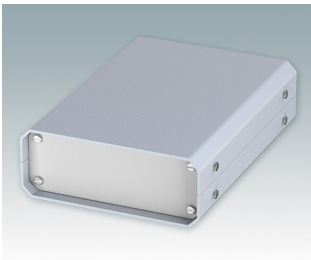
**M5505119**  
UNICASE 5  
Aluminum  
Black RAL 9005  
14.45"x11.81"x5.30"



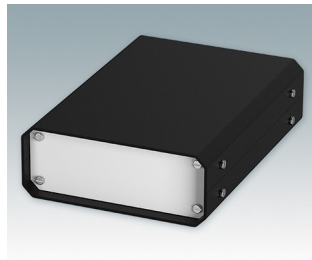
**M5506110**  
UNICASE 6  
Aluminum  
Light gray RAL 7035  
18.66"x11.81"x5.30"



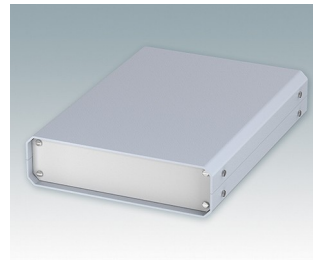
**M5506119**  
UNICASE 6  
Aluminum  
Black RAL 9005  
18.66"x11.81"x5.30"



**M5511110**  
UNICASE SL1  
Aluminum  
Light gray RAL 7035  
5.12"x7.09"x1.97"



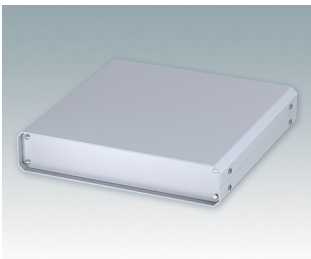
**M5511119**  
UNICASE SL1  
Aluminum  
Black RAL 9005  
5.12"x7.09"x1.97"



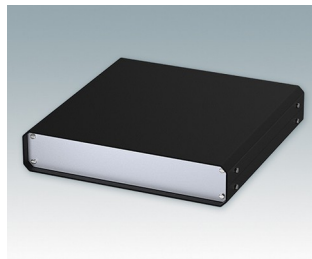
**M5512110**  
UNICASE SL2  
Aluminum  
Light gray RAL 7035  
7.28"x9.84"x1.97"



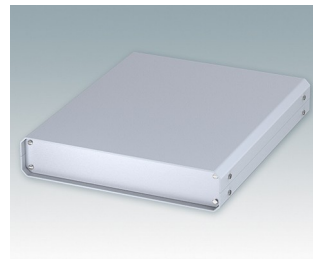
**M5512119**  
UNICASE SL2  
Aluminum  
Black RAL 9005  
7.28"x9.84"x1.97"



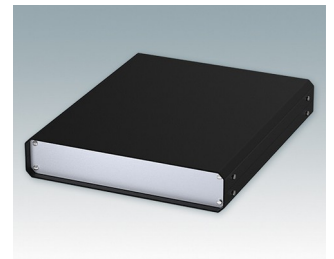
**M5513110**  
UNICASE SL3  
Aluminum  
Light gray RAL 7035  
9.84"x9.84"x1.97"



**M5513119**  
UNICASE SL3  
Aluminum  
Black RAL 9005  
9.84"x9.84"x1.97"

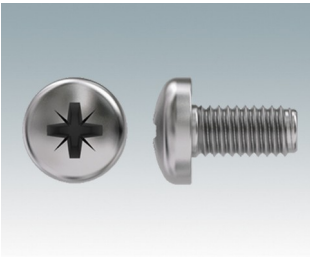


**M5514110**  
UNICASE SL4  
Aluminum  
Light gray RAL 7035  
9.84"x11.81"x1.97"



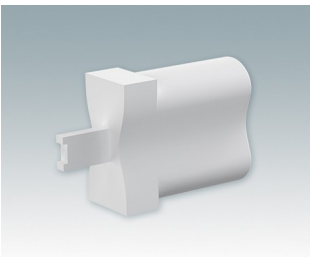
**M5514119**  
UNICASE SL4  
Aluminum  
Black RAL 9005  
9.84"x11.81"x1.97"

## Accessory "screws"



**M5600010**  
PCB Fixing Screws, M3  
Steel  
Zinc coated  
0.24"

## Accessory



**M5500001**  
Unicase Assembly Tool  
PA 2200 (Polyamide)  
White  
1.73"x0.51"x1.06"

Subject to technical modification without notice. © OKW Enclosures Ltd