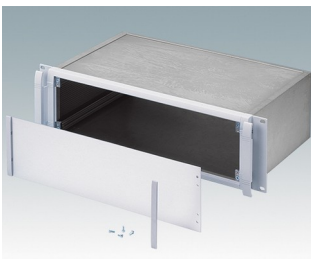
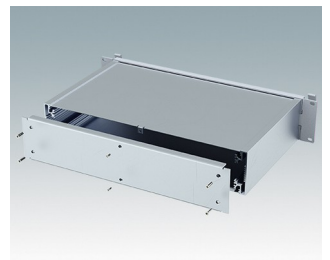
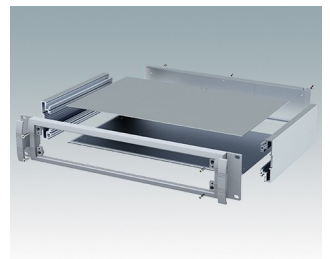
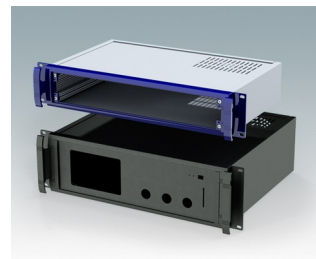
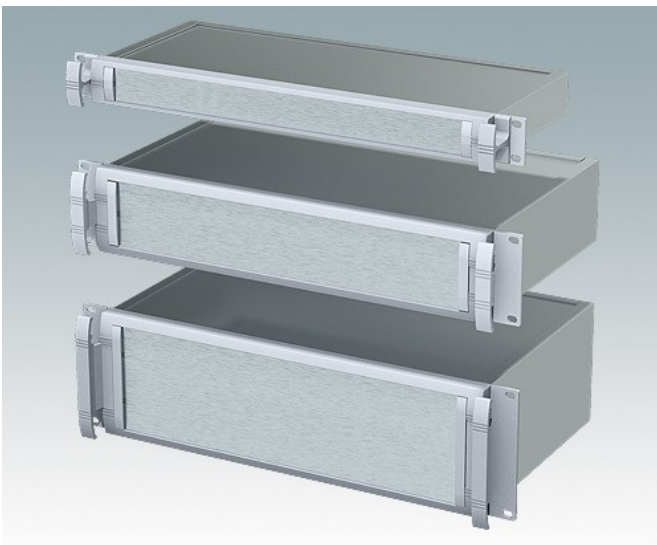


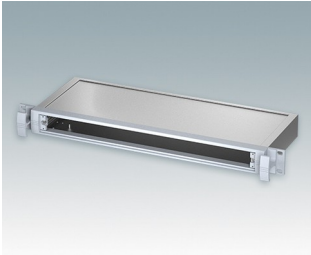
Robust 19" rack mount enclosures to DIN 41494 and IEC 60297-3

- Exclusive range of 19" rack cases in aluminium in 1U, 2U and 3U sizes
- Three standard depths, custom sizes to order
- Attractive diecast front bezel incorporating unique 'comfort-handles' and rack mounting ears powder painted light gray, RAL 7035
- Robust case body assembly includes flat top and base panels, two side extrusions and the rear panel
- Side extrusions, top, base and rear panels are supplied coated in **Iridite NCP** clear conductive finish
- Internal guide rails for PCBs and chassis plates
- Front panel (accessory) recessed in bezel for locating keypads or labels
- Accessory internal mounting plates
- Cases supplied fully assembled.

Order your own fully customized version [learn more here >>](#)



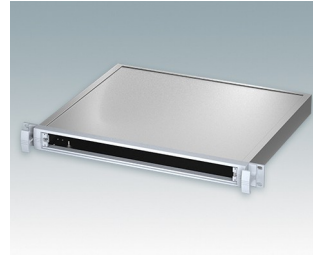
Select Versions



M5910015
 METTEC 19" 1Ux6.59"
 Aluminum
 Light gray RAL 7035
 1.73"x19.00"x6.59"



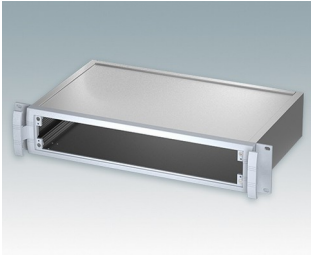
M5910025
 METTEC 19" 1Ux10.35"
 Aluminum
 Light gray RAL 7035
 1.73"x19.00"x10.53"



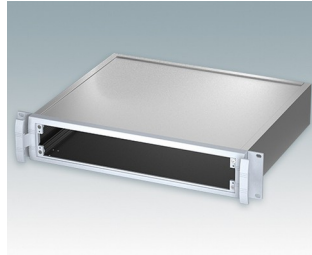
M5910035
 METTEC 19" 1Ux14.46"
 Aluminum
 Light gray RAL 7035
 1.73"x19.00"x14.47"



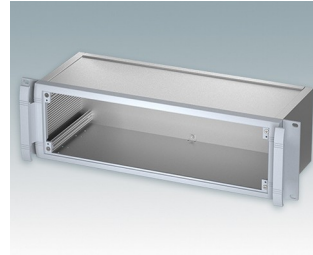
M5920015
 METTEC 19" 2Ux6.59"
 Aluminum
 Light gray RAL 7035
 3.46"x19.00"x6.59"



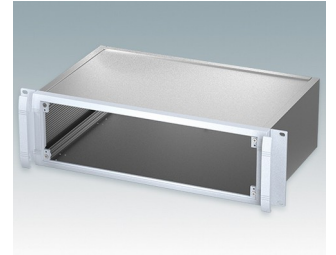
M5920025
 METTEC 19" 2Ux10.35"
 Aluminum
 Light gray RAL 7035
 3.46"x19.00"x10.53"



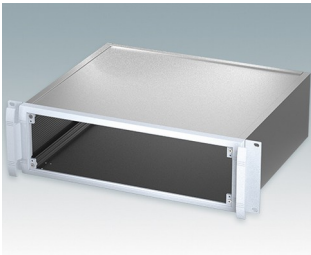
M5920035
 METTEC 19" 2Ux14.46"
 Aluminum
 Light gray RAL 7035
 3.46"x19.00"x14.47"



M5930015
 METTEC 19" 3Ux6.59"
 Aluminum
 Light gray RAL 7035
 5.22"x19.00"x6.59"

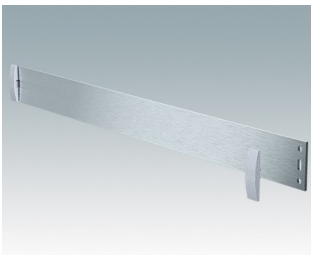


M5930025
 METTEC 19" 3Ux10.35"
 Aluminum
 Light gray RAL 7035
 5.22"x19.00"x10.53"



M5930035
 METTEC 19" 3Ux14.46"
 Aluminum
 Light gray RAL 7035
 5.22"x19.00"x14.47"

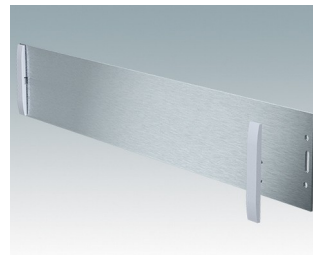
Accessory



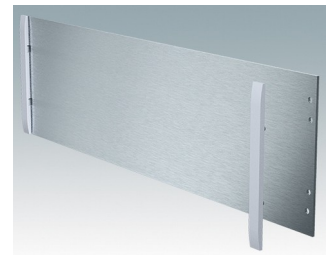
M5900010
 Front panel kit (1U)
 Aluminum
 Matt anodized
 15.45"x0.08"x1.32"



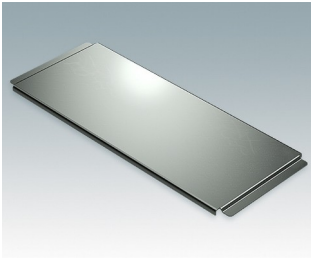
M5900016
 19" mounting kit
 Black RAL 9005



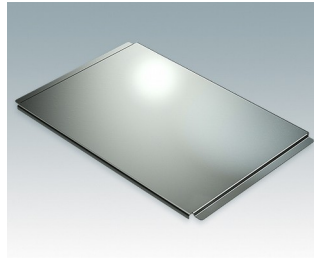
M5900020
 Front panel kit (2U)
 Aluminum
 Matt anodized
 15.45"x0.08"x2.64"



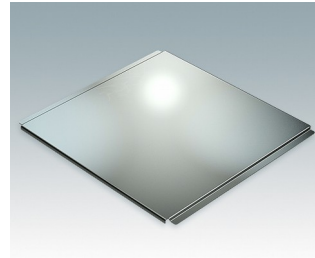
M5900030
 Front panel kit (3U)
 Aluminum
 Matt anodized
 15.45"x0.08"x4.37"



M5900201
Chassis plate (6.59")
Aluminum
Natural finish
14.84"x5.87"x0.30"



M5900202
Chassis plate (10.35")
Aluminum
Natural finish
14.84"x9.80"x0.30"



M5900203
Chassis plate (14.46")
Aluminum
Natural finish
14.84"x13.74"x0.30"



M6000035
19" mounting kit
Light gray RAL 7035

Subject to technical modification without notice. © OKW Enclosures Ltd