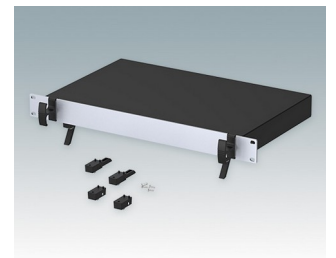
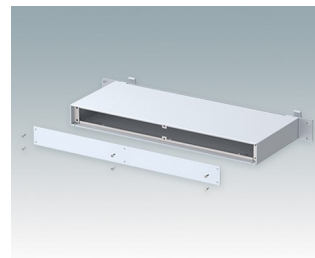
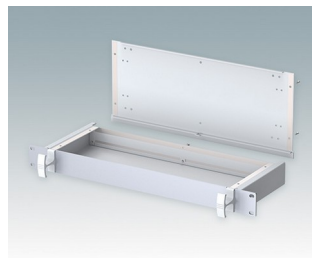
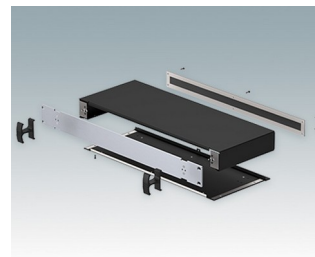
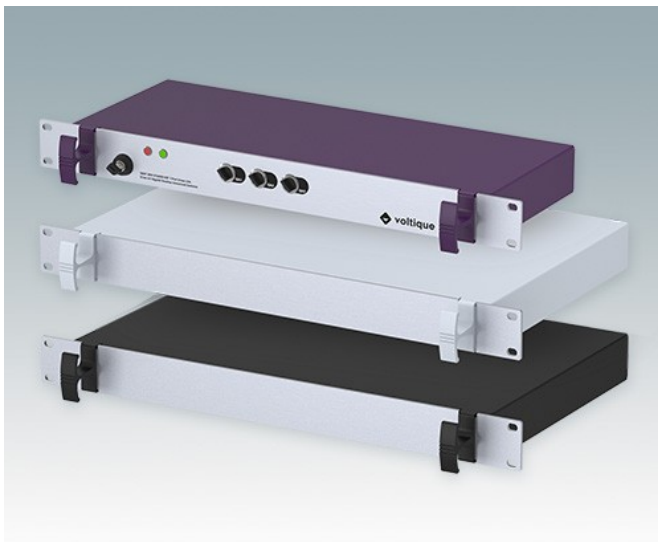


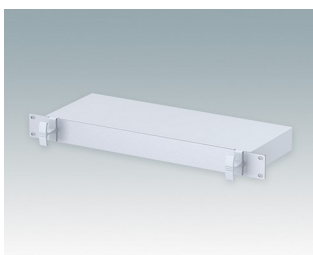
Versatile 1U rack mount enclosures to DIN 41494 and IEC 60297-3

- Modern aluminum 19" rack mount cases in two standard colors, gray or black
- Attractive design incorporating unique 'comfort-handles'
- Robust folded case body with removable base panel
- Removable rear panel
- Anodized aluminum 1U x 19" front panel
- Mounting holes in base for PCBs
- Optional molded feet can be fitted for desktop use
- Accessory PCB mounting pillars
- Cases supplied fully assembled.

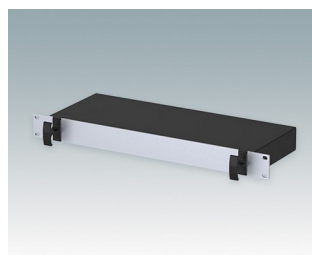
Order your own fully customized version [learn more here >>](#)



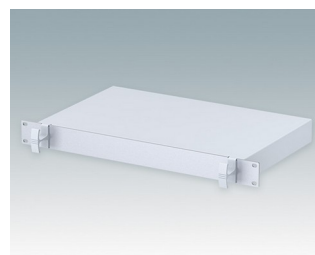
Select Versions



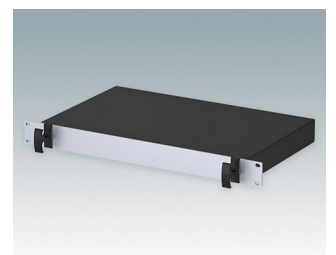
M4919115
VERSAMET 19" 1Ux6.49"
Aluminum
Light gray RAL 7035
1.73"x19.02"x6.50"



M4919119
VERSAMET 19" 1Ux6.49"
Aluminum
Black RAL 9005
1.73"x19.02"x6.50"

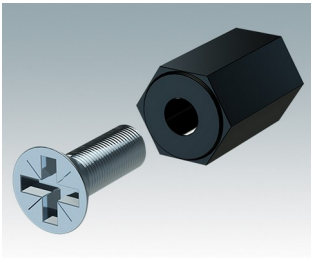


M4919125
VERSAMET 19" 1Ux10.43"
Aluminum
Light gray RAL 7035
1.73"x19.02"x10.43"

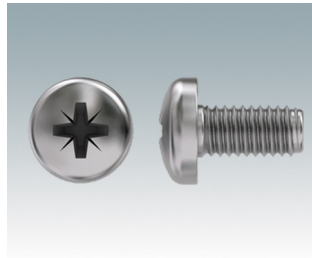


M4919129
VERSAMET 19" 1Ux10.43"
Aluminum
Black RAL 9005
1.73"x19.02"x10.43"

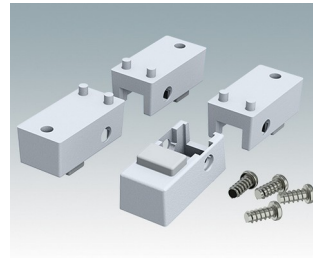
Accessory



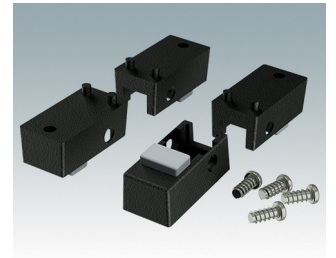
M5600001
PCB mounting kit
PA 6
Black RAL 9005



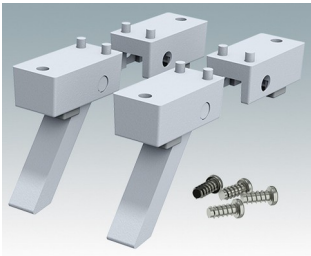
M5600010
PCB Fixing Screws, M3
Steel
Zinc coated
0.24"



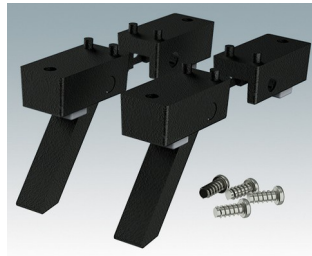
M5600015
Case Feet Kit 1
ABS (UL 94 HB)
Light gray RAL 7035
1.34"x0.67"x0.63"



M5600019
Case Feet Kit 1
ABS (UL 94 HB)
Black RAL 9005
1.34"x0.67"x0.63"



M5600045
Case Feet Kit 2
ABS (UL 94 HB)
Light gray RAL 7035
1.34"x0.67"x0.63"



M5600049
Case Feet Kit 2
ABS (UL 94 HB)
Black RAL 9005
1.34"x0.67"x0.63"



M5900016
19" mounting kit
Black RAL 9005



M6000035
19" mounting kit
Light gray RAL 7035

Subject to technical modification without notice. © OKW Enclosures Ltd