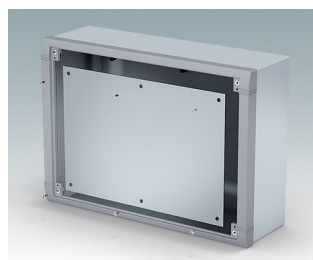
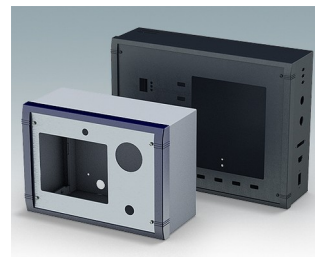


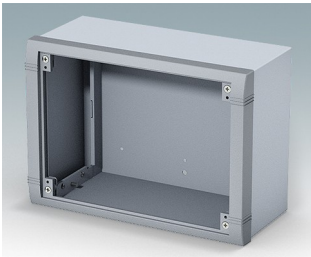
## Wall mount enclosures for indoor electronic instruments, controls and HMI

- Very modern design in three standard sizes
- Total access to the electronics during installation and servicing
- Rear section includes holes for fitting PCBs and internal mounting plates
- Cable glands and connectors can be mounted to the underside of the rear section
- Top section fits over the rear panel and also secures the front bezel
- Die cast front bezel provides a modern look to the cases
- Front panels recessed in the bezel to protect controls
- Pre-punched wall mounting points in the rear panel
- Four M4 earth studs provided inside
- Two standard color combinations gray or black
- All fixings supplied with case
- Accessory anodized aluminum front panels
- Accessory internal mounting plate kit and PCB screw pillars.

Order your own fully customized version [learn more here >>](#)



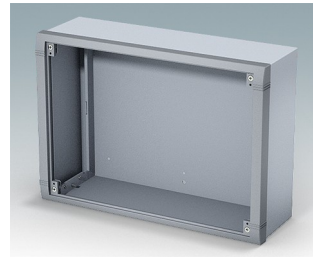
## Select Versions



**M5825105**  
Datamet S  
Aluminum  
Light gray/window gray RAL  
7035/7040  
9.84"x7.09"x4.59"



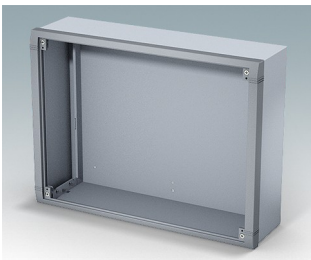
**M5825109**  
Datamet S  
Aluminum  
Black RAL 9005  
9.84"x7.09"x4.59"



**M5835105**  
Datamet M  
Aluminum  
Light gray/window gray RAL  
7035/7040  
13.78"x9.84"x4.59"



**M5835109**  
Datamet M  
Aluminum  
Black RAL 9005  
13.78"x9.84"x4.59"

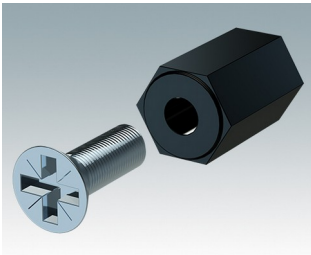


**M5840105**  
Datamet L  
Aluminum  
Light gray/window gray RAL  
7035/7040  
15.75"x11.81"x4.59"

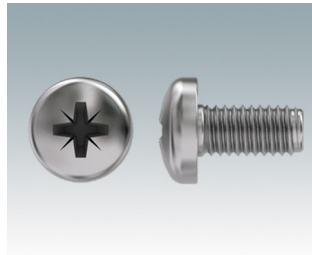


**M5840109**  
Datamet L  
Aluminum  
Black RAL 9005  
15.75"x11.81"x4.59"

## Accessory



**M5600001**  
PCB mounting kit  
PA 6  
Black RAL 9005



**M5600010**  
PCB Fixing Screws, M3  
Steel  
Zinc coated  
0.24"



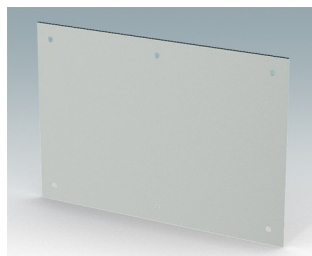
**M5800025**  
Front panel S  
Aluminum  
Matt anodized  
8.66"x0.08"x6.28"



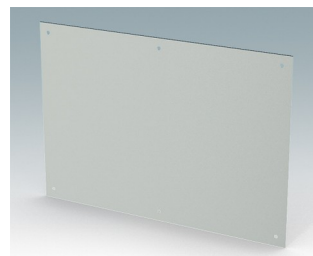
**M5800035**  
Front panel M  
Aluminum  
Matt anodized  
12.60"x0.08"x9.04"



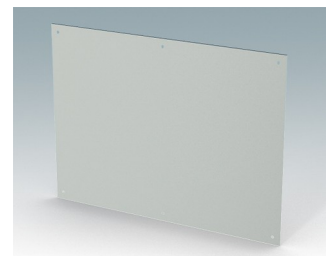
**M5800040**  
Front panel L  
Aluminum  
Matt anodized  
14.57"x0.08"x11.00"



**M5804125**  
Mounting plate kit S  
Aluminum  
Matt anodized  
6.89"x4.72"x0.06"



**M5804135**  
Mounting plate kit M  
Aluminum  
Matt anodized  
10.83"x7.48"x0.06"



**M5804140**  
Mounting plate kit L  
Aluminum  
Matt anodized  
12.80"x9.45"x0.06"

