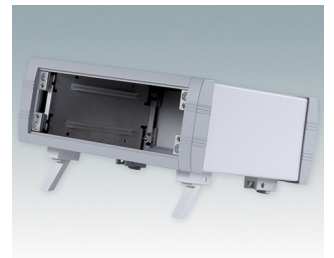
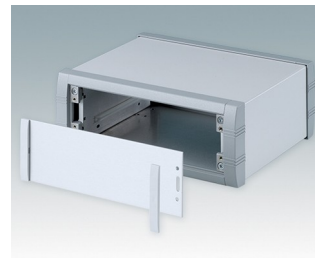
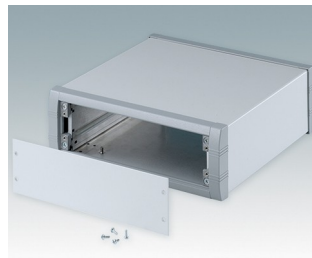
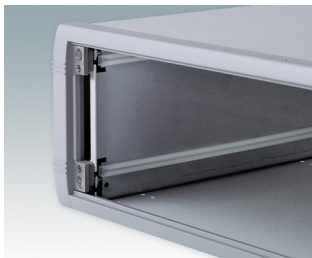
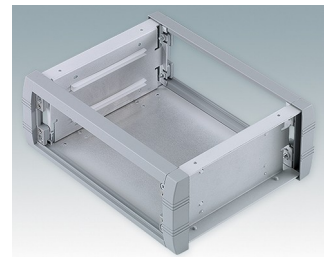
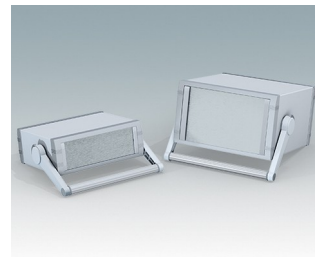
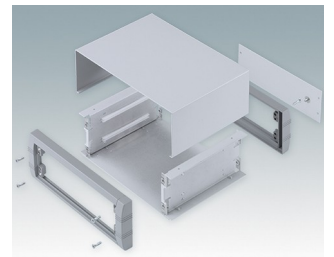
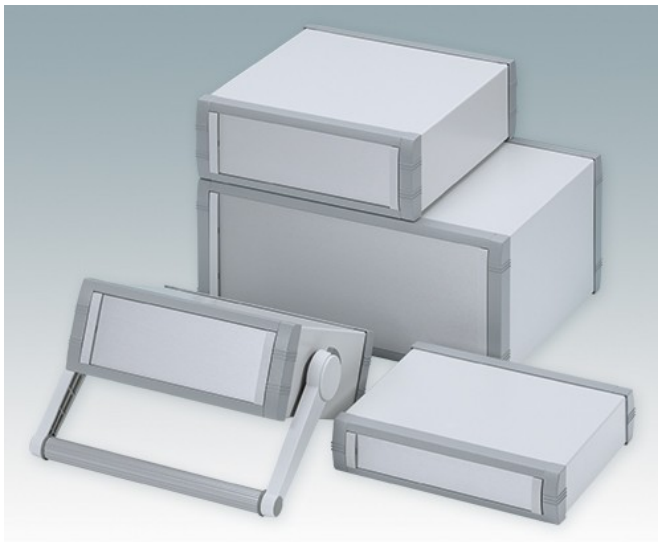


## Stylish and versatile instrument enclosures

- Advanced aluminum instrument enclosures with or without a bail arm
- Robust and versatile design in six sizes
- Internal chassis with horizontal guide positions for slide-in PCBs
- Four snap-in polyamide PCB guides included
- Stylish die cast front and rear bezels assembled to the folded aluminum case body
- Removable rear panel - recessed for protection of connectors, switches etc.
- Recessed aluminum front panel (accessory)
- Four non-slip rubber feet included
- Accessory molded tilt feet available.

Order your own fully customized version [learn more here >>](#)



## Select Versions



**M5623015**  
UNIMET-PLUS 1  
Aluminum  
Light gray/window gray RAL  
7035/7040  
9.06"x7.60"x1.97"



**M5623035**  
UNIMET-PLUS 1H  
Aluminum  
Light gray/window gray RAL  
7035/7040  
9.06"x7.60"x1.97"



**M5623115**  
UNIMET-PLUS 2  
Aluminum  
Light gray/window gray RAL  
7035/7040  
9.06"x7.60"x3.35"



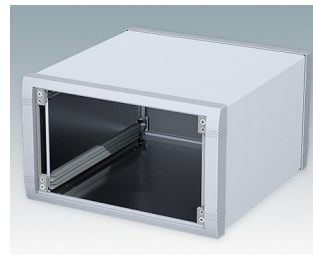
**M5623135**  
UNIMET-PLUS 2H  
Aluminum  
Light gray/window gray RAL  
7035/7040  
9.06"x7.60"x3.35"



**M5625115**  
UNIMET-PLUS 3  
Aluminum  
Light gray/window gray RAL  
7035/7040  
9.84"x10.35"x3.35"



**M5625135**  
UNIMET-PLUS 3H  
Aluminum  
Light gray/window gray RAL  
7035/7040  
9.84"x10.35"x3.35"



**M5625315**  
UNIMET-PLUS 5  
Aluminum  
Light gray/window gray RAL  
7035/7040  
9.84"x10.35"x5.91"



**M5625335**  
UNIMET-PLUS 5H  
Aluminum  
Light gray/window gray RAL  
7035/7040  
9.84"x10.35"x5.91"



**M5635215**  
UNIMET-PLUS 4  
Aluminum  
Light gray/window gray RAL  
7035/7040  
13.78"x10.35"x4.72"



**M5635235**  
UNIMET-PLUS 4H  
Aluminum  
Light gray/window gray RAL  
7035/7040  
13.78"x10.35"x4.72"

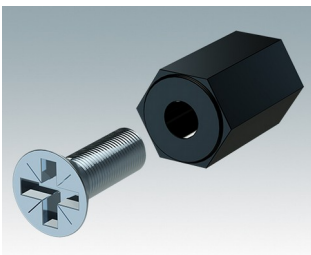


**M5635315**  
UNIMET-PLUS 6  
Aluminum  
Light gray/window gray RAL  
7035/7040  
13.78"x10.35"x5.91"

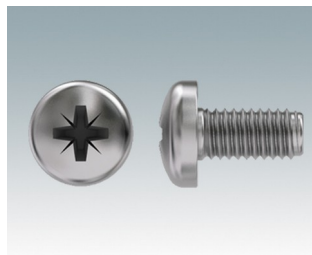


**M5635335**  
UNIMET-PLUS 6H  
Aluminum  
Light gray/window gray RAL  
7035/7040  
13.78"x10.35"x5.91"

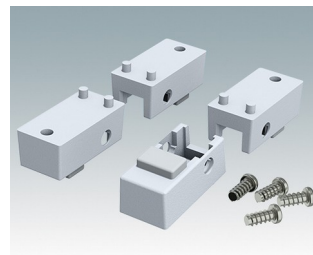
## Accessory



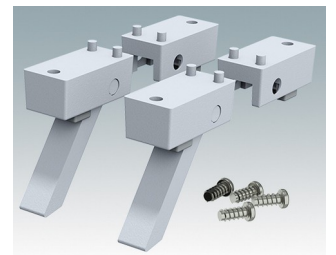
**M5600001**  
PCB mounting kit  
PA 6  
Black RAL 9005



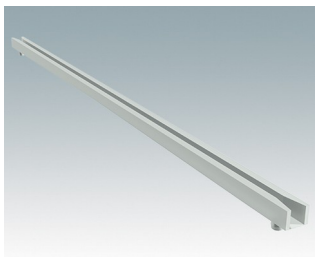
**M5600010**  
PCB Fixing Screws, M3  
Steel  
Zinc coated  
0.24"



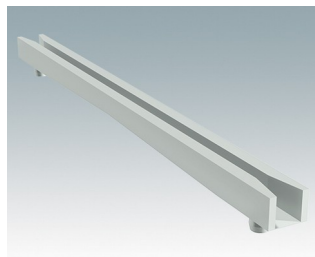
**M5600015**  
Case Feet Kit 1  
ABS (UL 94 HB)  
Light gray RAL 7035  
1.34"x0.67"x0.63"



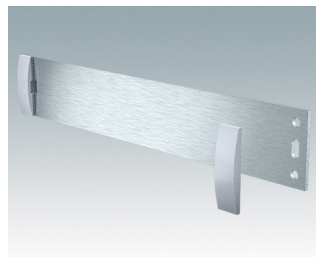
**M5600045**  
Case Feet Kit 2  
ABS (UL 94 HB)  
Light gray RAL 7035  
1.34"x0.67"x0.63"



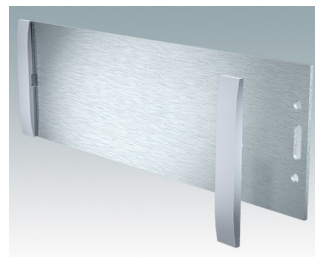
**M5700202**  
 PCB guide, 8.50"  
 PA 6/6 (UL 94 V-2)  
 White



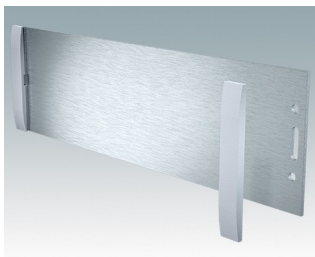
**M5700203**  
 PCB guide, 4.00"  
 PA 6/6 (UL 94 V-2)  
 White



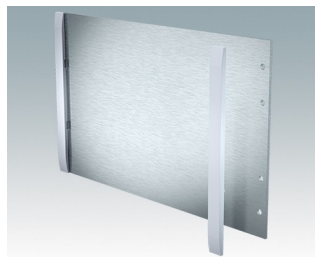
**M5700607**  
 Front panel kit (1/1H)  
 Aluminum  
 Matt anodized  
 7.85"x0.08"x1.32"



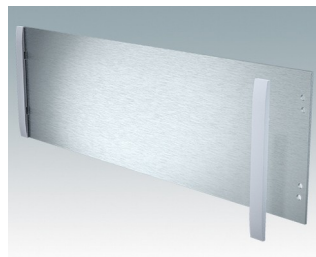
**M5700608**  
 Front panel kit (2/2H)  
 Aluminum  
 Matt anodized  
 7.85"x0.08"x2.56"



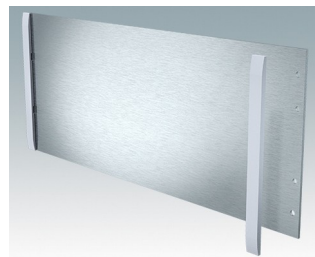
**M5700613**  
 Front panel kit (3/3H)  
 Aluminum  
 Matt anodized  
 8.64"x0.08"x2.56"



**M5700616**  
 Front panel kit (5/5H)  
 Aluminum  
 Matt anodized  
 8.64"x0.08"x5.12"



**M5700620**  
 Front panel kit (4/4H)  
 Aluminum  
 Matt anodized  
 12.58"x0.08"x3.94"



**M5700621**  
 Front panel kit (6/6H)  
 Aluminum  
 Matt anodized  
 12.58"x0.08"x5.12"

Subject to technical modification without notice. © OKW Enclosures Ltd