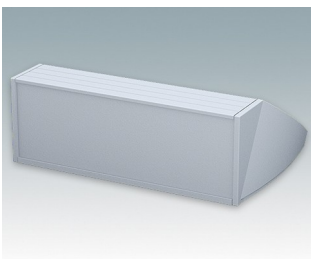
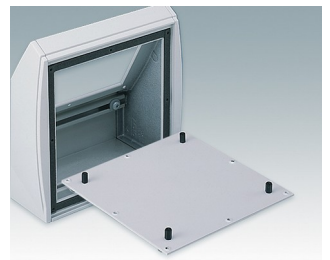
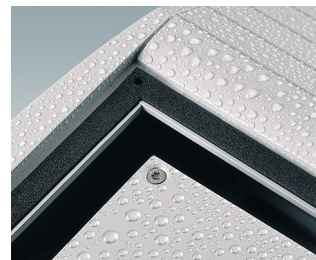
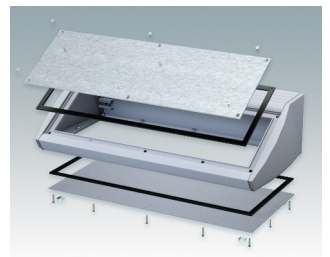


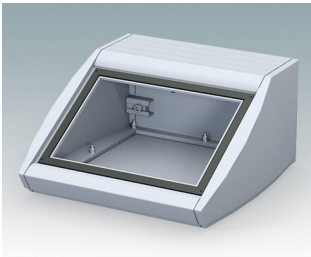
Sloping front terminal enclosures

- Ergonomic aluminum instrument enclosures for desktop and wall mounted applications
- Very robust design in three standard sizes and two colors: light gray and black
- Optional IP 54 models (VDE tested) with gaskets for the front and base panels
- Pre-assembled aluminum case body with flat rear panel for connectors, switches, power inlets etc.
- Stainless steel M3 Torx® T10 and MS M3 Pozidriv fixings supplied
- Four non-slip rubber feet included
- Accessory front panel is recessed for a membrane keypad
- Pre-punched PCB fixing points in base
- For IP 54 protection accessory PCB pillars are required
- Accessory wall mounting kit.

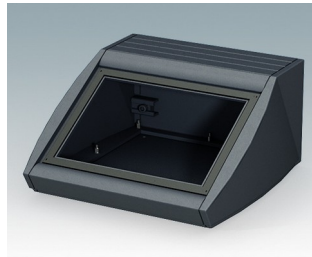
Order your own fully customized version [learn more here >>](#)



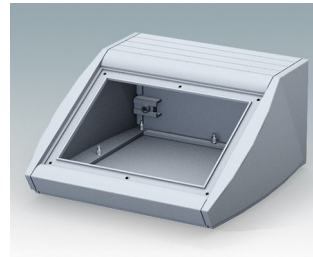
Select Versions



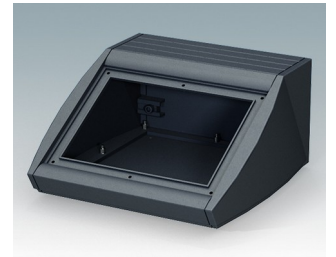
M5320105
UNIDESK M200 IP 54
Aluminum
Light gray RAL 7035
7.87"x7.87"x4.02"
IP 54



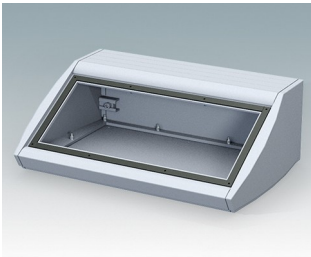
M5320109
UNIDESK M200 IP 54
Aluminum
Black RAL 9005
7.87"x7.87"x4.02"
IP 54



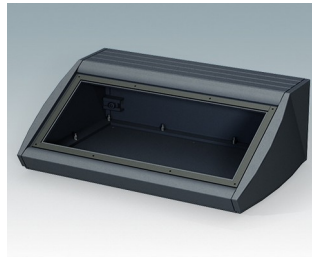
M5320115
UNIDESK M200
Aluminum
Light gray RAL 7035
7.87"x7.87"x4.02"



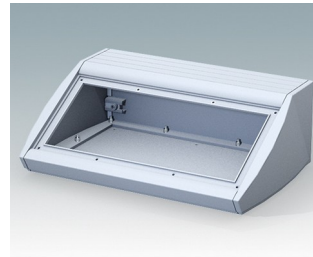
M5320119
UNIDESK M200
Aluminum
Black RAL 9005
7.87"x7.87"x4.02"



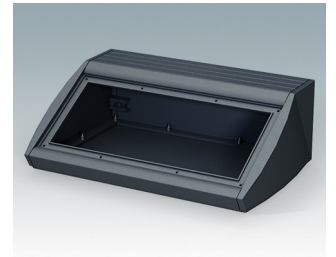
M5330105
UNIDESK M300 IP 54
Aluminum
Light gray RAL 7035
11.81"x7.87"x4.02"
IP 54



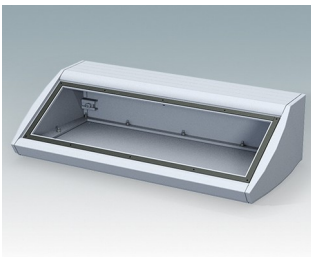
M5330109
UNIDESK M300 IP 54
Aluminum
Black RAL 9005
11.81"x7.87"x4.02"
IP 54



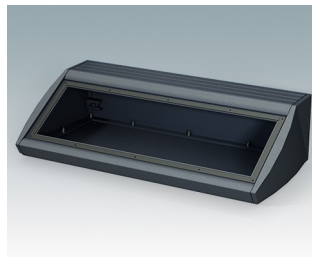
M5330115
UNIDESK M300
Aluminum
Light gray RAL 7035
11.81"x7.87"x4.02"



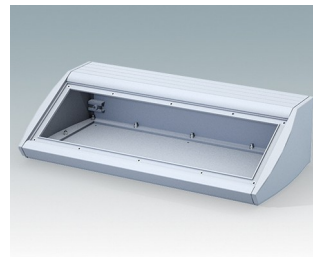
M5330119
UNIDESK M300
Aluminum
Black RAL 9005
11.81"x7.87"x4.02"



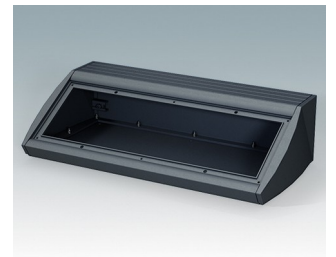
M5340105
UNIDESK M400 IP 54
Aluminum
Light gray RAL 7035
15.75"x7.87"x4.02"
IP 54



M5340109
UNIDESK M400 IP 54
Aluminum
Black RAL 9005
15.75"x7.87"x4.02"
IP 54

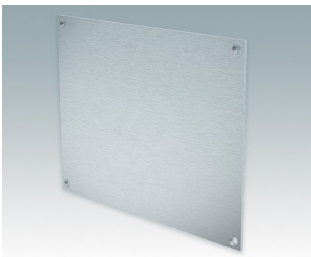


M5340115
UNIDESK M400
Aluminum
Light gray RAL 7035
15.75"x7.87"x4.02"

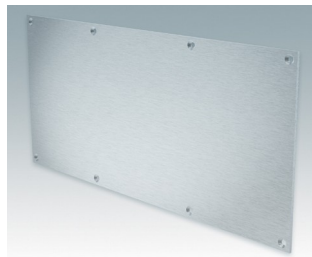


M5340119
UNIDESK M400
Aluminum
Black RAL 9005
15.75"x7.87"x4.02"

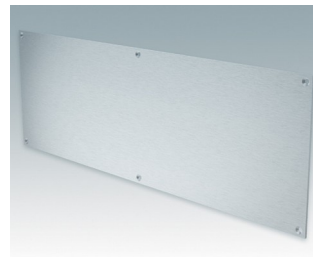
Accessory



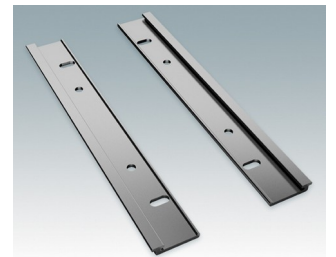
M5301502
Front panel M200
Aluminum
Matt anodized
6.69"x0.08"x4.84"



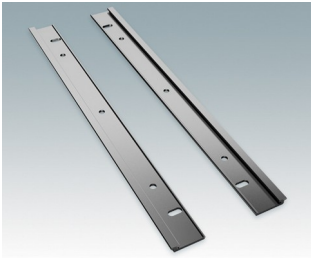
M5301503
Front panel M300
Aluminum
Matt anodized
10.63"x0.08"x4.84"



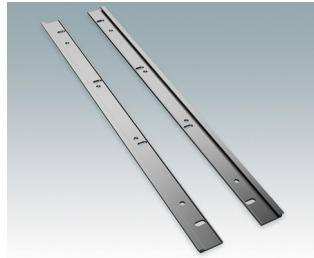
M5301504
Front panel M400
Aluminum
Matt anodized
14.57"x0.08"x4.84"



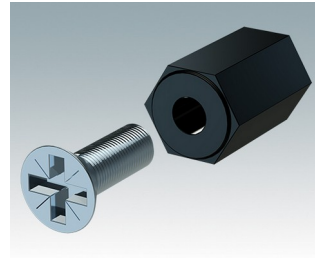
M5302212
Wall mount kit M200
Aluminum
Matt anodized



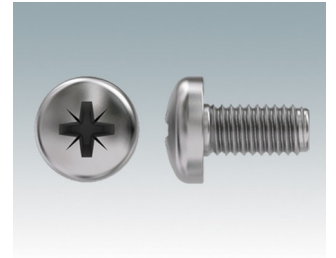
M5302213
Wall mount kit M300
Aluminum
Matt anodized



M5302214
Wall mount kit M400
Aluminum
Matt anodized



M5600001
PCB mounting kit
PA 6
Black RAL 9005



M5600010
PCB Fixing Screws, M3
Steel
Zinc coated
0.24"

Subject to technical modification without notice. © OKW Enclosures Ltd