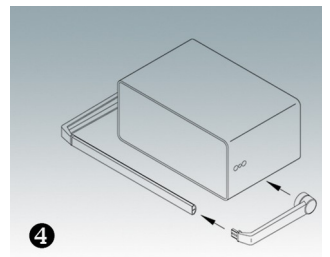
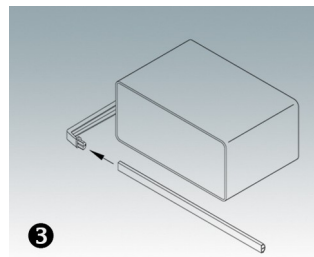
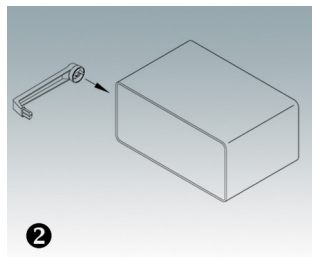
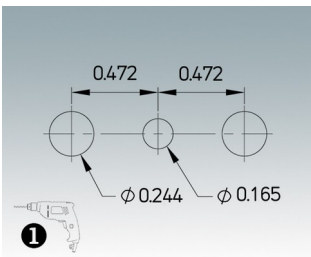
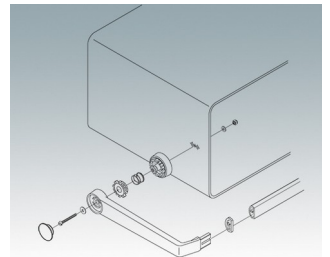
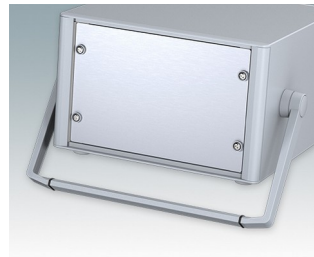
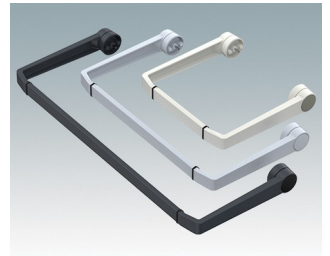
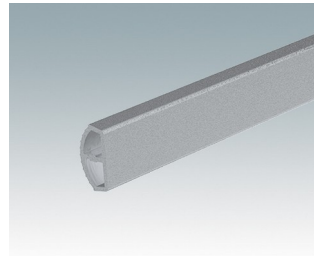
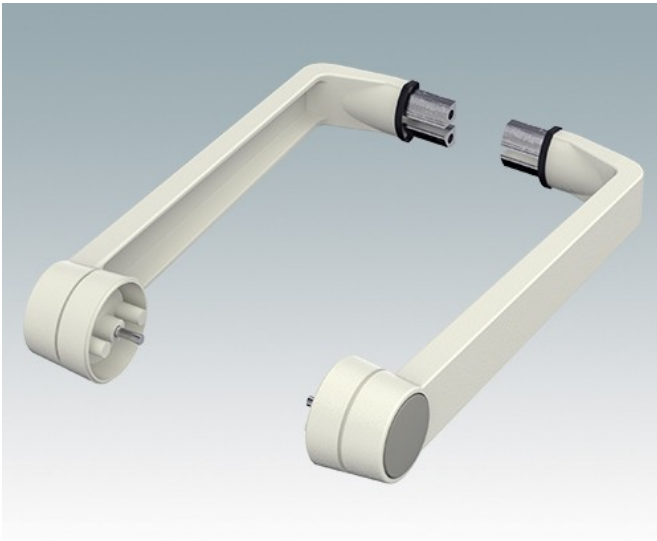
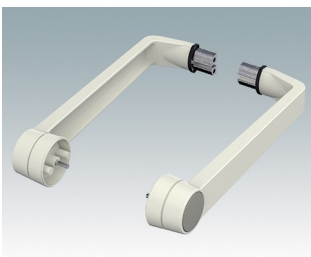


# UNIVERSAL BAIL ARMS

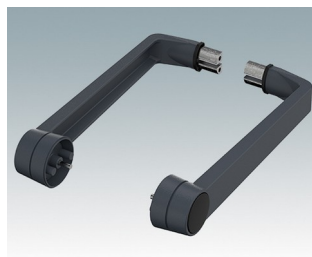
- Tilt and swivel carry handle bars/bail arms made of diecast zinc
- With matching aluminum profile, cut to the correct width for your enclosure, and supplied as a separate component.



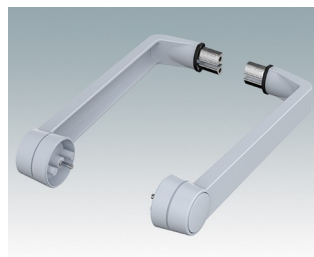
## Select Versions



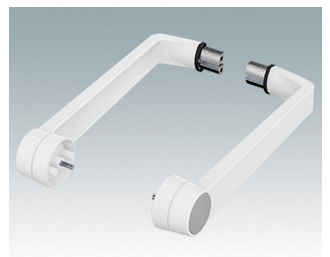
**A9300014**  
Side arm kit  
Zinc  
Off-white RAL 9002



**M5093004**  
Side arm kit  
Zinc  
Anthracite RAL 7016



**M5093005**  
Side arm kit  
Zinc  
Light gray RAL 7035



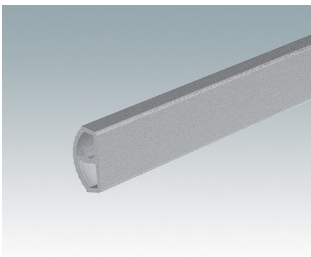
**M5093006**  
Side arm kit  
Zinc  
Traffic white RAL 9016

# UNIVERSAL BAIL ARMS

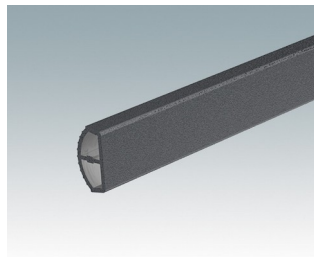


M5093009  
Side arm kit  
Zinc  
Black RAL 9005

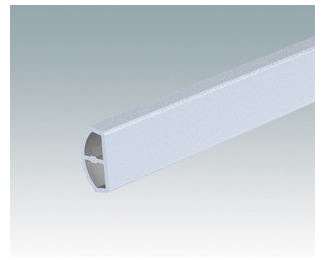
## System components to complete



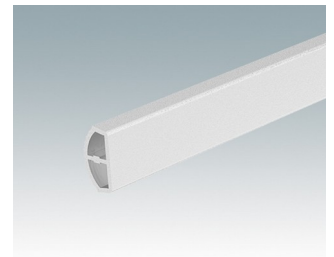
M50930-xxx  
Handle profile, RAL 9006  
Aluminum  
Silver metallic RAL 9006



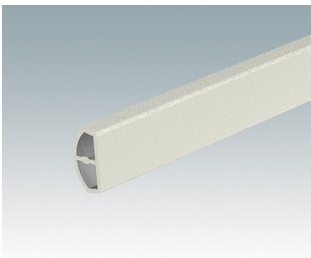
M50934-xxx  
Handle profile, RAL 7016  
Aluminum  
Anthracite RAL 7016



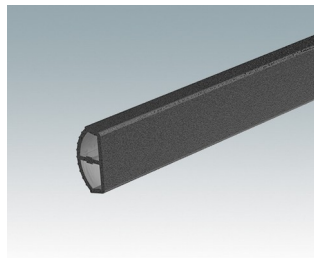
M50935-xxx  
Handle profile, RAL 7035  
Aluminum  
Light gray RAL 7035



M50936-xxx  
Handle profile, RAL 9016  
Aluminum  
Traffic white RAL 9016



M50937-xxx  
Handle profile, RAL 9002  
Aluminum  
Off-white RAL 9002



M50939-xxx  
Handle profile, RAL 9005  
Aluminum  
Black RAL 9005

Subject to technical modification without notice. © OKW Enclosures Ltd