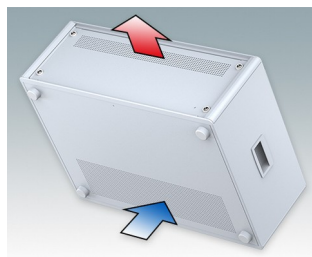
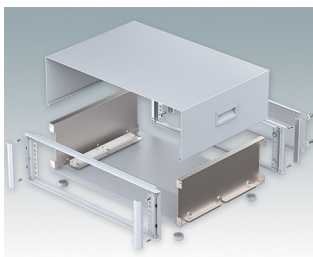
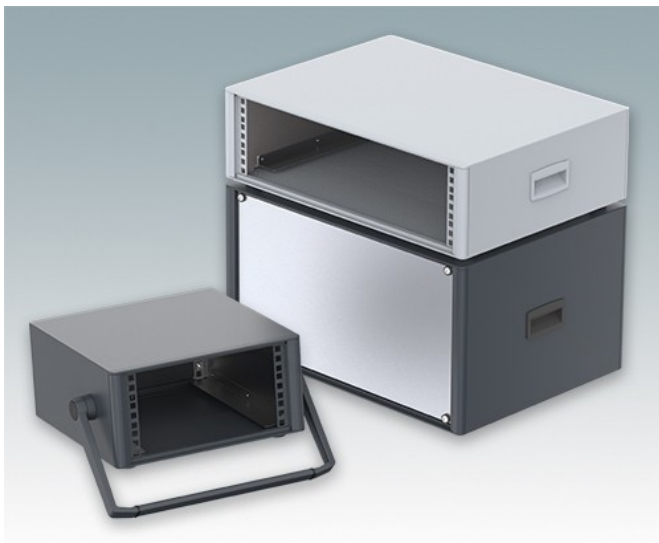


Modern Desktop Mini-Rack Enclosures to DIN 41494 and IEC 60297-3

- Cohesive design with no visible fixing screws. Robust yet lightweight aluminum construction
- Designed to accept standard 10.5" (42HP) and 19" (84HP) subracks, chassis and front panels
- Die cast bezels fit flush with the case body for a smooth appearance
- Recessed ABS side handles for easy carrying
- 10.5" versions also available with a bail arm
- Removable rear panel and internal subrack/chassis support rails included
- Ventilation holes in base and rear panel
- All case panels fitted with M4 threaded pillars for earth connections
- Molded ABS non-slip feet included
- Supplied fully assembled and ready to use
- Accessory anodized 10.5" and 19" front panels available.

Order your own fully customized version [learn more here >>](#)



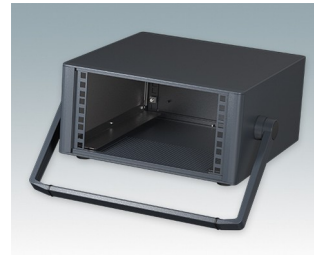
Select Versions



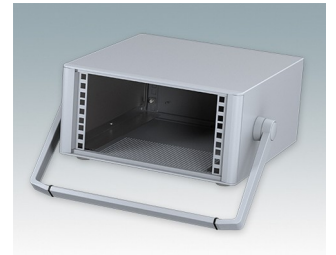
M6610344
TECHNOMET 10.5" 3Ux13"
Aluminum
Anthracite RAL 7016
6.17"x12.72"x12.99"



M6610345
TECHNOMET 10.5" 3Ux13"
Aluminum
Light gray RAL 7035
6.17"x12.72"x12.99"



M6610354
TECHNOMET 10.5" 3Ux13"
Aluminum
Anthracite RAL 7016
6.17"x12.72"x12.99"



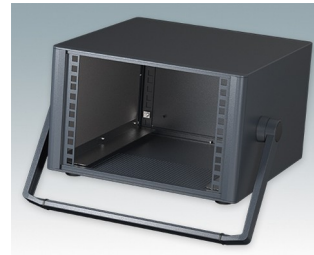
M6610355
TECHNOMET 10.5" 3Ux13"
Aluminum
Light gray RAL 7035
6.17"x12.72"x12.99"



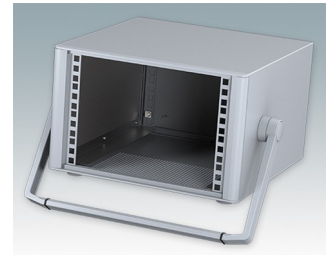
M6610444
TECHNOMET 10.5" 4Ux13"
Aluminum
Anthracite RAL 7016
7.87"x12.72"x12.99"



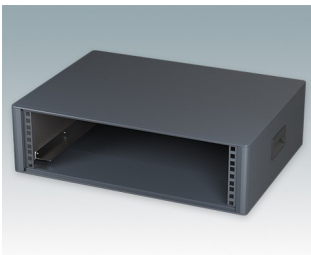
M6610445
TECHNOMET 10.5" 4Ux13"
Aluminum
Light gray RAL 7035
7.87"x12.72"x12.99"



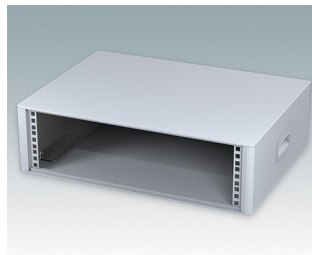
M6610454
TECHNOMET 10.5" 4Ux13"
Aluminum
Anthracite RAL 7016
7.87"x12.72"x12.99"



M6610455
TECHNOMET 10.5" 4Ux13"
Aluminum
Light gray RAL 7035
7.87"x12.72"x12.99"



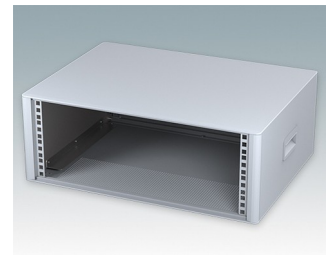
M6619344
TECHNOMET 19" 3Ux15.74"
Aluminum
Anthracite RAL 7016
6.13"x21.22"x15.75"



M6619345
TECHNOMET 19" 3Ux15.74"
Aluminum
Light gray RAL 7035
6.13"x21.22"x15.75"



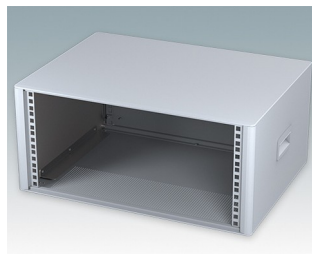
M6619444
TECHNOMET 19" 4Ux15.74"
Aluminum
Anthracite RAL 7016
7.87"x21.22"x15.75"



M6619445
TECHNOMET 19" 4Ux15.74"
Aluminum
Light gray RAL 7035
7.87"x21.22"x15.75"



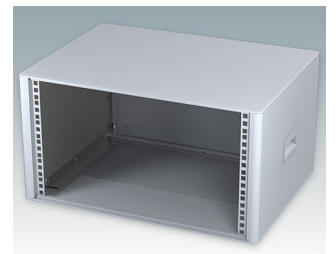
M6619544
TECHNOMET 19" 5Ux15.74"
Aluminum
Anthracite RAL 7016
9.63"x21.22"x15.75"



M6619545
TECHNOMET 19" 5Ux15.74"
Aluminum
Light gray RAL 7035
9.63"x21.22"x15.75"



M6619644
TECHNOMET 19" 6Ux15.74"
Aluminum
Anthracite RAL 7016
11.37"x21.22"x15.75"



M6619645
TECHNOMET 19" 6Ux15.74"
Aluminum
Light gray RAL 7035
11.37"x21.22"x15.75"

Accessory



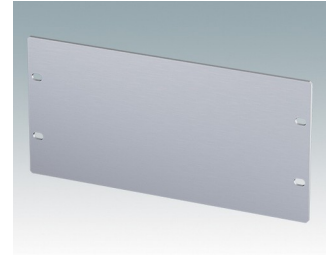
M5900016
19" mounting kit
Black RAL 9005



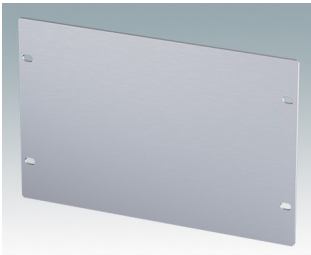
M5900018
19" mounting kit black screws
Black RAL 9005



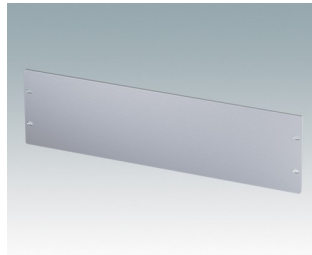
M6000035
19" mounting kit
Light gray RAL 7035



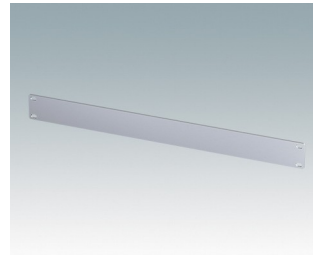
M6010001
Front panel 3Ux10.5"
Aluminum
Matt anodized
10.60"x0.12"x5.22"



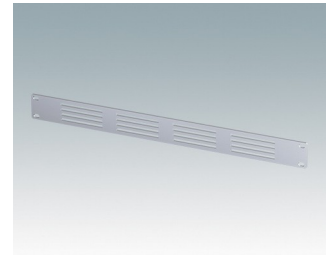
M6010040
Front panel 4Ux10.5"
Aluminum
Matt anodized
10.60"x0.12"x6.97"



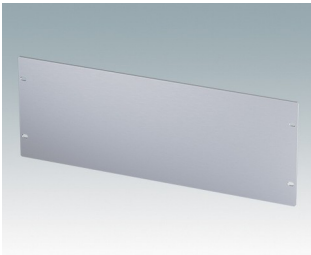
M6019001
Front panel 3Ux19"
Aluminum
Matt anodized
19.00"x0.12"x5.22"



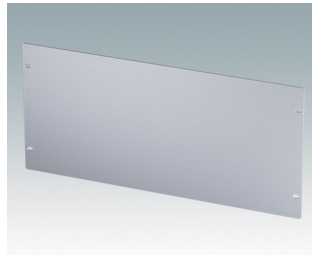
M6019010
Front panel 1Ux19"
Aluminum
Matt anodized
19.00"x0.12"x1.72"



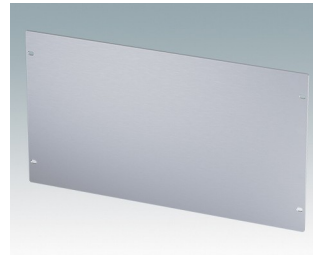
M6019011
Front panel 1Ux19" vented
Aluminum
Matt anodized
19.00"x0.12"x1.72"



M6019040
Front panel 4Ux19"
Aluminum
Matt anodized
19.00"x0.12"x6.97"



M6019050
Front panel 5Ux19"
Aluminum
Matt anodized
19.00"x0.12"x8.72"



M6019060
Front panel 6Ux19"
Aluminum
Matt anodized
19.00"x0.12"x10.47"

Subject to technical modification without notice. © OKW Enclosures Ltd