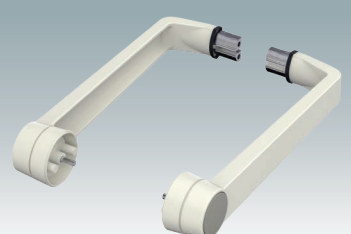
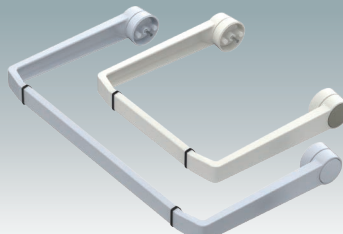
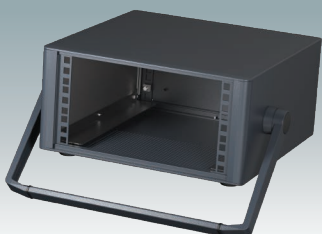
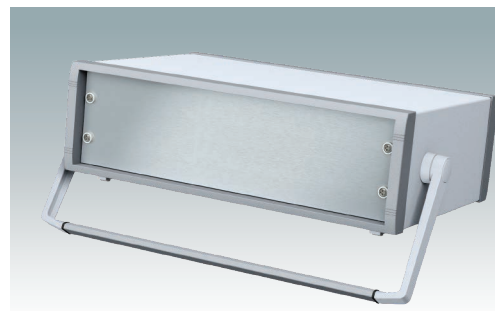
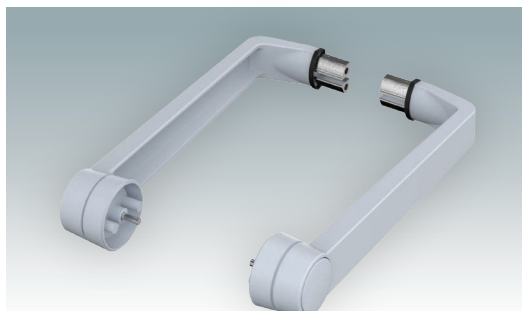
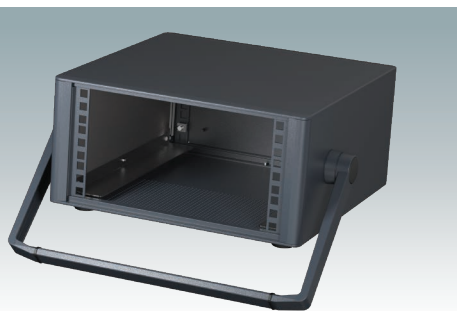
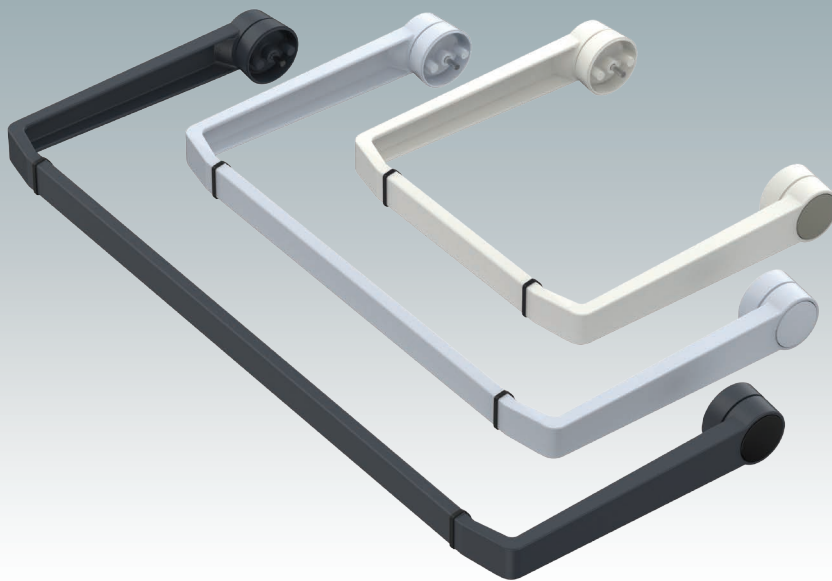


## **DIECAST BAIL ARM**

Universal Carry Handle  
For Enclosures



# BAIL ARM



## Universal Bail Arm For Portable Instrument Enclosures

Tilt and swivel carry handle bars made of diecast zinc for canting and carrying metal electronic enclosures. The strong push-button ratchet features 30° indexing. Aluminum handle profiles are ordered separately and fit between the two side arm assemblies. The handle profiles are supplied cut to the required length (26 mm shorter than the width of your enclosure). This is specified by completing the chosen handle profile part number.

In order to improve the stability, we recommend glueing the aluminum profiles to the side arms.

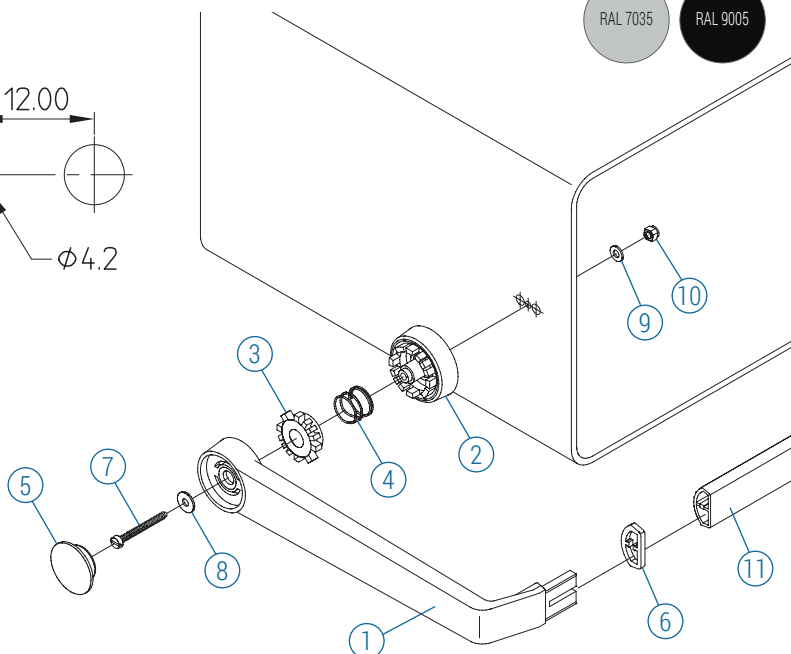
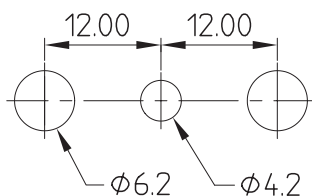
## Standard colors

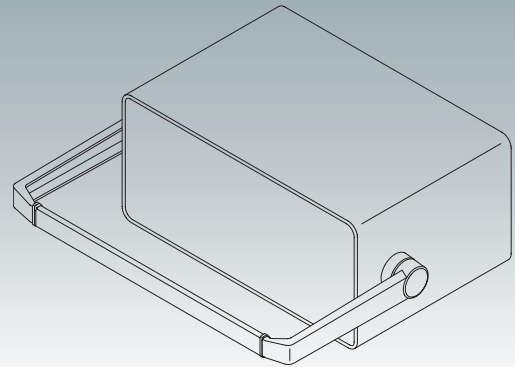
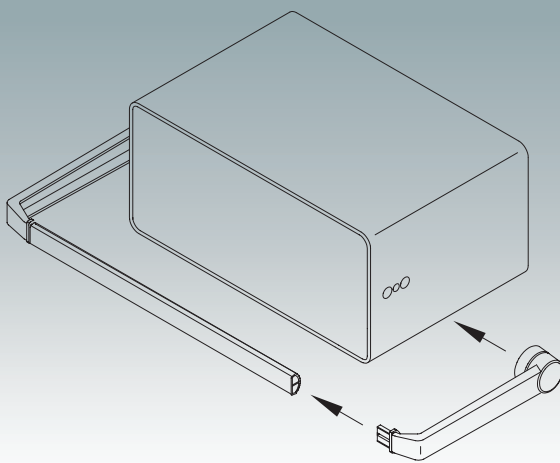
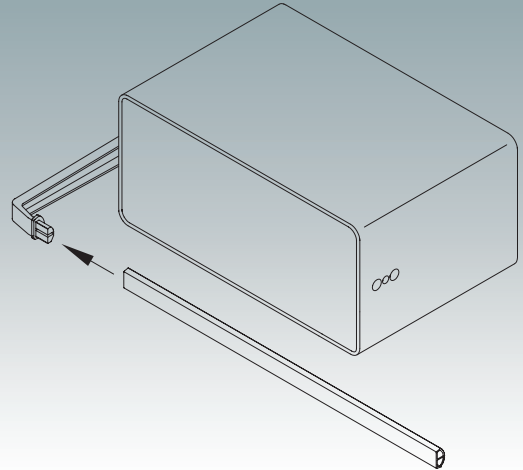
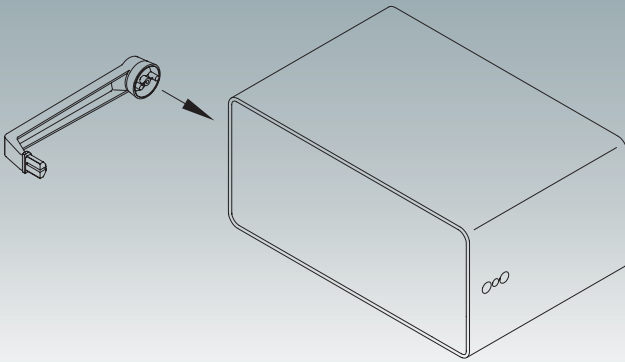
Off-white RAL 9002.  
Anthracite RAL 7016.  
Light gray RAL 7035.  
Black RAL 9005.



### Supply

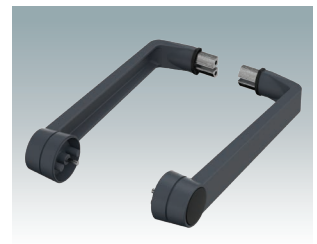
- ① Side arm (x2)
- ② Socket (x2)
- ③ Star (x2)
- ④ Spring (x2)
- ⑤ Button (x2)
- ⑥ Rubber Grip (x2)
- ⑦ M4 x 35 (x2)
- ⑧ Washer 4.3/12 (x2)
- ⑨ Washer 4.3/9 (x2)
- ⑩ M4 Nut
- ⑪ Handle Profile





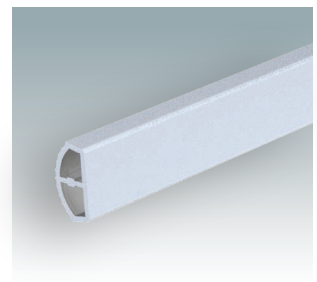
## SIDE ARM KIT

Part No.	Description	Arm Colors	Push-Button Colors
<b>A 93 00 014</b>	Side arm kit	Off-white RAL 9002	Pebble gray RAL 7032
<b>A 50 93 004</b>	Side arm kit	Anthracite RAL 7016	Black RAL 9005
<b>A 50 93 005</b>	Side arm kit	Light gray RAL 7035	Light gray RAL 7035
<b>A 50 93 009</b>	Side arm kit	Black RAL 9005	Black RAL 9005



## EXTRUSION PROFILE

Part No. See note**	Description	Finish	Colors
<b>M 50 93 0-xxx</b>	Extrusion profile	Painted, fine texture	Silver metallic, RAL 9006
<b>M 50 93 4-xxx</b>	Extrusion profile	Painted, fine texture	Anthracite RAL 7016
<b>M 50 93 5-xxx</b>	Extrusion profile	Painted, fine texture	Light gray RAL 7035
<b>M 50 93 7-xxx</b>	Extrusion profile	Painted, fine texture	Off-white RAL 9002
<b>M 50 93 9-xxx</b>	Extrusion profile	Painted, fine texture	Black RAL 9005



\*\*How to order: replace **xxx** in the part number with the length required. Example: 350 mm wide enclosure, handle profile length is 324 mm (350-26). So the part number will be **M 50 93 0-324** with the handle painted in silver metallic RAL 9006. If the enclosure dimension is 350.5 mm the part number would be **M 50 93 4-324.5** with the handle painted in anthracite RAL 7016.

For full 2D drawings and 3D models please see our website.





# METcase™

## MANUFACTURER

Metcase Enclosures  
A division of:  
OKW Enclosures Ltd.  
15 Brunel Way  
Segensworth East  
Fareham, Hampshire  
PO15 5TX  
United Kingdom

Telephone: +44 (0) 1489 583858  
Email: [sales@metcase.co.uk](mailto:sales@metcase.co.uk)  
Website: [www.metcase.co.uk](http://www.metcase.co.uk)

© OKW Enclosures Ltd. All rights reserved  
Catalog Edition 1.2 – January 2025.  
This catalog will be valid until 31/12/2027.  
Subject to technical modifications without notice.  
Typographical and other errors do not justify any  
claim for damages.  
Digital Version: 01/2025e

## Presented by:



**OKW Enclosures, Inc.**  
3000 Old Pond Road,  
Bridgeville, PA 15017  
Phone: (412) 220 9244  
Toll Free: (800) 965 9872  
Email: [sales@metcaseusa.com](mailto:sales@metcaseusa.com)

[www.metcaseusa.com](http://www.metcaseusa.com)