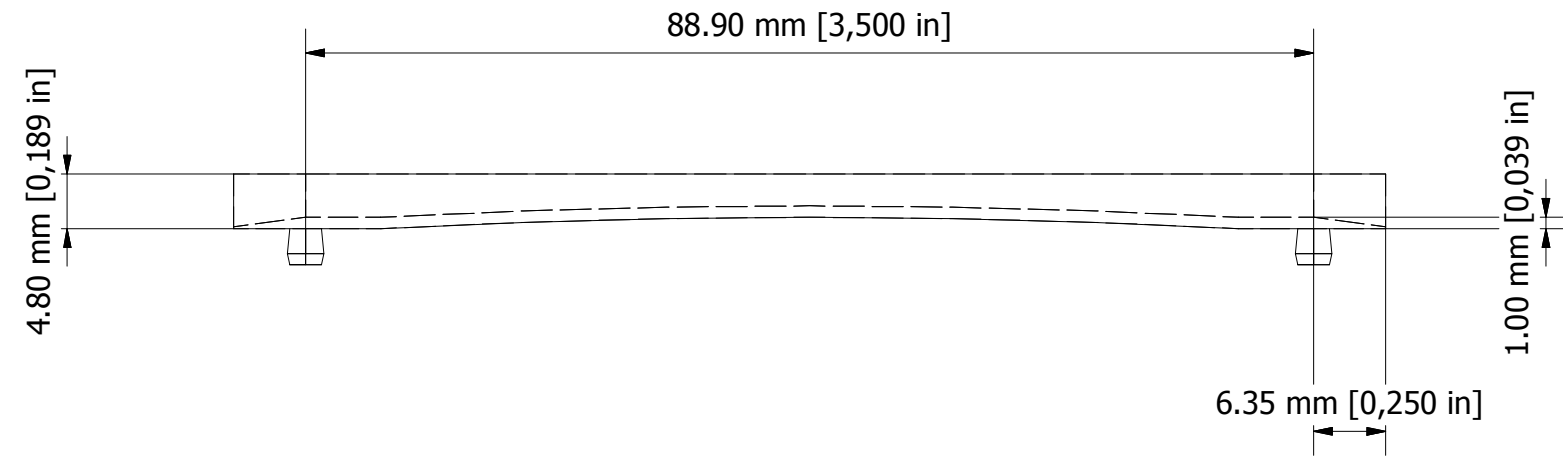


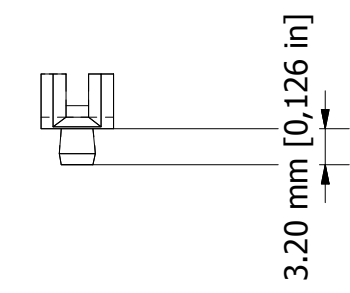
6 5 4 3 2 1

D

D

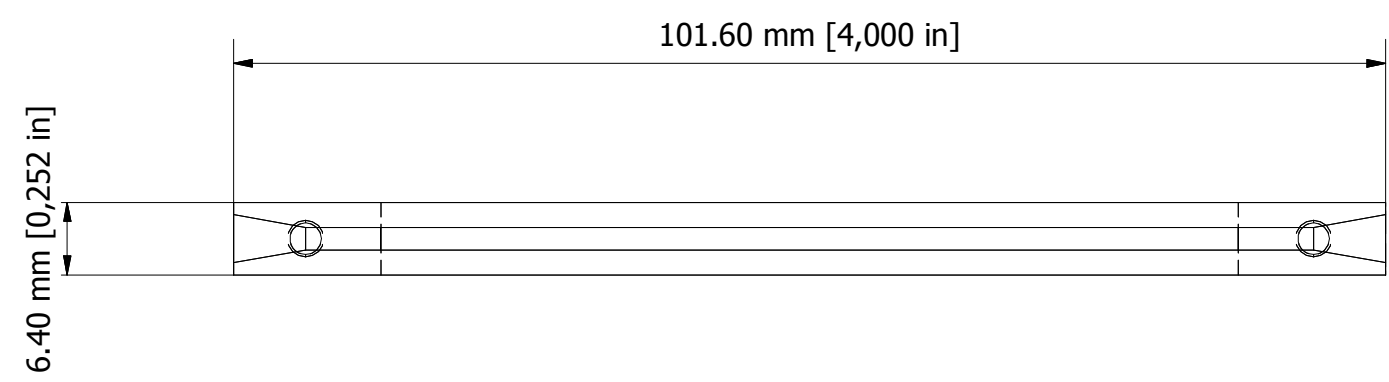


Accepts 1.60 mm [1/16 in] PCB

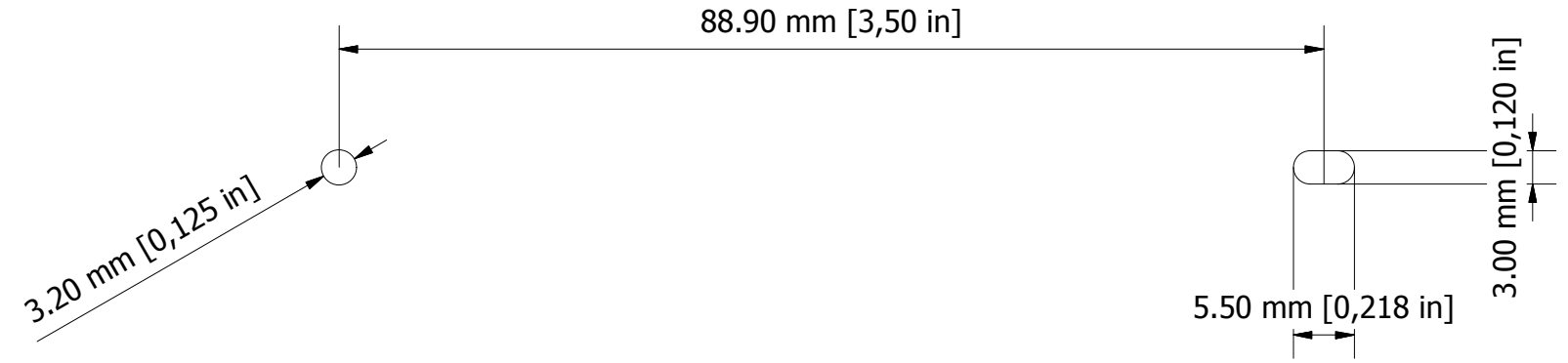


C

C



Recommended mounting holes for 1.50 mm [0,059 in] thick panel.



B

B

A

A

FIRST ANGLE PROJECTION

Designed by L Clark	Description Clip-In Card Guides	Date 28/02/2013	Scale 1.5:1
<b>METCASE ENCLOSURES</b> 15 Brunel Way, Segensworth East, Fareham, Hampshire, UK. PO15 5TX Tel: +44 (0)1489 583858 Email: metcase@okw.co.uk		<b>METcase™</b> www.metcase.com Part Number <b>M5700203</b>	
		Issue <b>1</b>	Sheet <b>1 / 1</b>

© OKW Enclosures Ltd (Date as shown). This drawing contains proprietary information of OKW Enclosures Ltd and is tendered subject to the following conditions. The information be retained in confidence, not be reproduced or copied, and not be used or incorporated in any product, unless permission is obtained in writing from OKW Enclosures Ltd.

6 5 4 3 2 1