

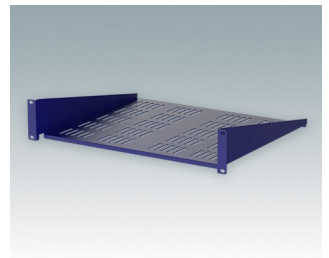
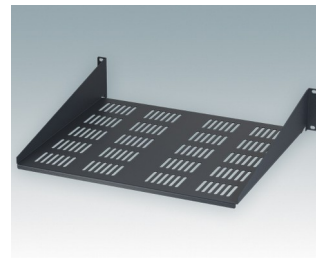
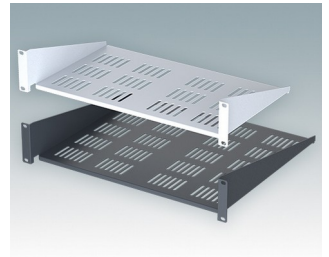
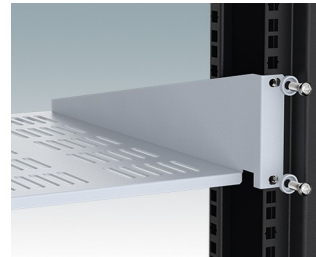
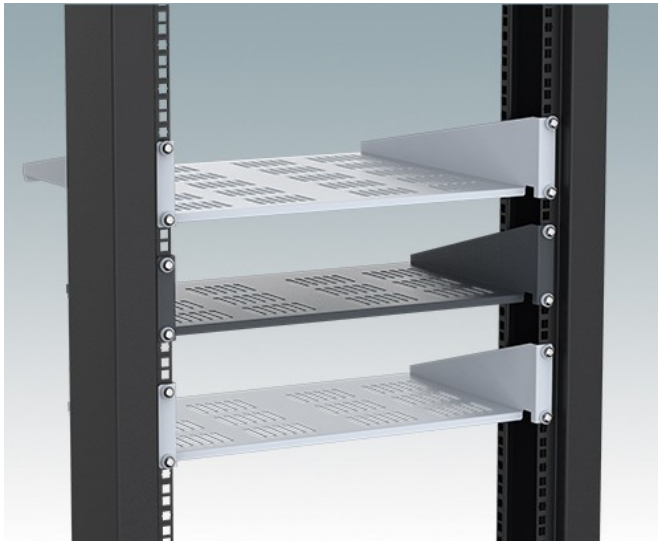
19" CANTILEVER SHELVES



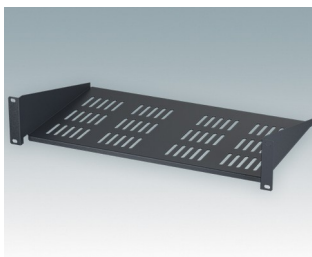
Universal design for mounting to any standard 19" rack or cabinet.

- Conforms to DIN 41494 and 60297-3
- Allow easy installation of equipment that does not have any built-in rack mounting facilities
- Made of CR4 mild steel and painted in a tough powder polyester paint finish
- Slots in the bottom aid in-rack ventilation
- Other sizes can be made to order.

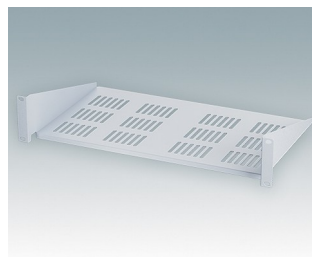
Order your own fully customized version [learn more here >>](#)



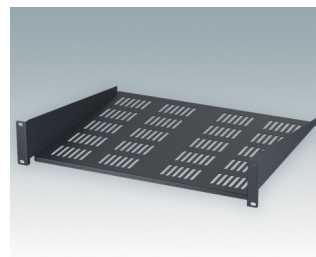
Select Versions



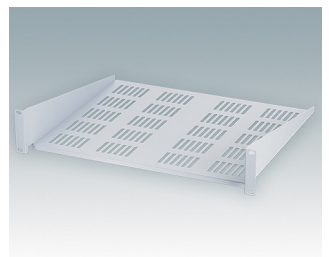
M6119264
19"x2U Cantilever Shelf
Mild Steel CR4
Anthracite RAL 7016
3.47"x19.00"x11.02"



M6119265
19"x2U Cantilever Rack Shelf
Mild Steel CR4
Light gray RAL 7035
3.47"x19.00"x11.02"



M6119284
19"x2U Cantilever Rack Shelf
Mild Steel CR4
Anthracite RAL 7016
3.47"x19.00"x15.75"



M6119285
19"x2U Cantilever Rack Shelf
Mild Steel CR4
Light gray RAL 7035
3.47"x19.00"x15.75"

19" CANTILEVER SHELVES

Accessory



M5900016
19" mounting kit
Black RAL 9005



M6000035
19" mounting kit
Light gray RAL 7035

Subject to technical modification without notice. © OKW Enclosures Ltd