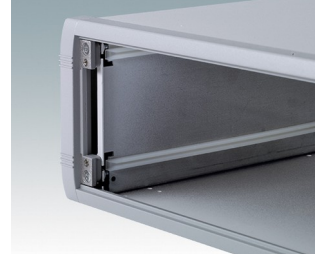
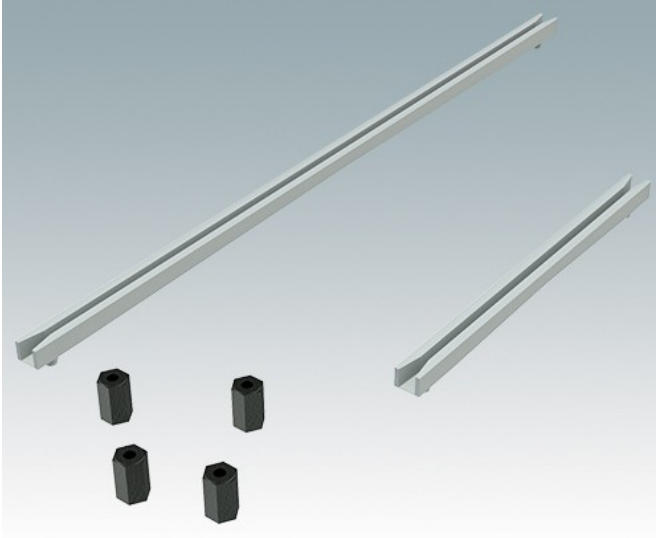
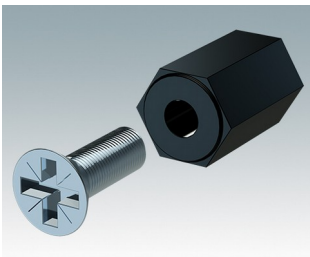


## Universal accessories for mounting PCBs in any enclosures

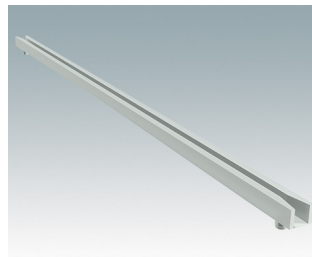
- M3 plastic PCB mounting pillars, 0.39" high
- Snap-in PCB guides for 0.63" (1.6 mm) thick PCBs.



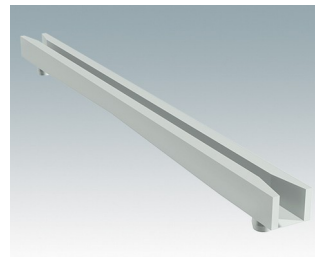
### Select Versions



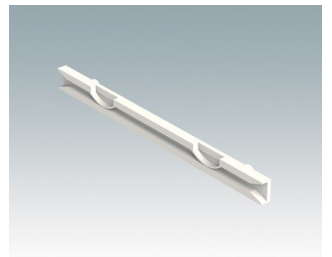
**M5600001**  
PCB mounting kit  
PA 6  
Black RAL 9005



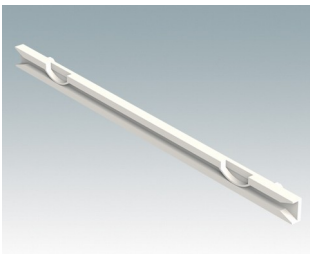
**M5700202**  
PCB guide, 8.50"  
PA 6/6 (UL 94 V-2)  
White



**M5700203**  
PCB guide, 4.00"  
PA 6/6 (UL 94 V-2)  
White

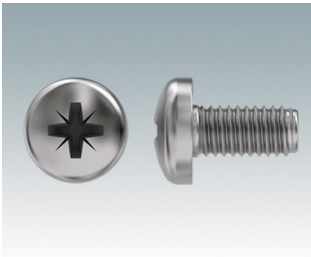


**M6490010**  
PCB Guide, 4.00"  
PA 6/6 (UL 94 V-0)  
Natural finish  
4.00"x0.30"x0.14"



**M6490020**  
PCB Guide, 5.50"  
PA 6/6 (UL 94 V-0)  
Natural finish  
5.50"x0.30"x0.14"

## Accessory



**M5600010**  
PCB Fixing Screws, M3  
Steel  
Zinc coated  
0.24"

Subject to technical modification without notice. © OKW Enclosures Ltd