

SIEMENS KTP/TP/MTP MODELS COMPATIBILITY DATA)

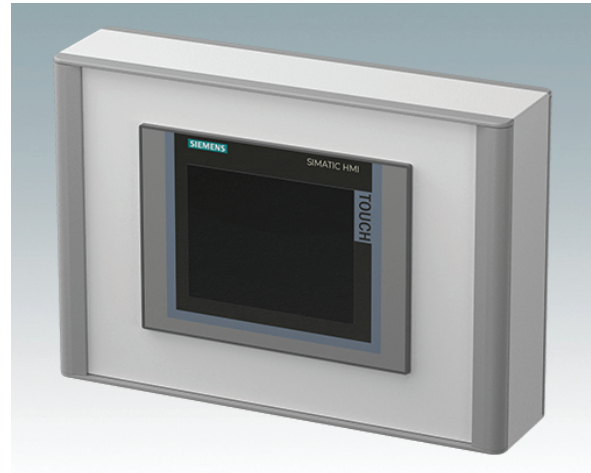
Product Overview:

Product Name: Siemens TP Series HMI Touch Panels
Enclosure Compatibility: TECHNOMET-CONTROL

These enclosures fit the Siemens models:

- KTP400
- TP700, MTP700
- TP900
- MTP1000
- TP1200, MTP1200.

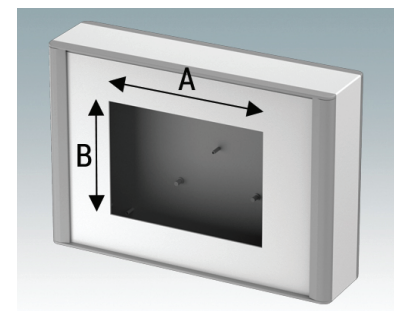
This table identifies which size Siemens display fits into each TECHNOMET-CONTROL enclosure.



Part Number	Enclosure Size (W x H x D)	Enclosure Model	Compatible Siemens Model
M70 23 002	9.06 x 7.09 x 3.74 in	C218V	KTP400
M70 23 006	9.06 x 7.09 x 3.74 in	C218V	KTP400
M70 36 102	14.17 x 9.84 x 3.74 in	C325V	TP700, MTP700, TP900, MTP1000
M70 36 106	14.17 x 9.84 x 3.74 in	C325V	TP700, MTP700, TP900, MTP1000
M70 36 402	14.17 x 14.17 x 3.74 in	C336V	TP700, MTP700, TP900, MTP1000
M70 36 406	14.17 x 14.17 x 3.74 in	C336V	TP700, MTP700, TP900, MTP1000
M70 42 202	16.54 x 11.81 x 3.74 in	C430V	TP900, MTP1000, TP1200, MTP1200
M70 42 206	16.54 x 11.81 x 3.74 in	C430V	TP900, MTP1000, TP1200, MTP1200

TECHNOMET-CONTROL front panel punching details for fitting Siemens KTP/TP/MTP displays.

Enclosure Model	Suitable Front Panels Anodized/RAL 9016/RAL 7042	Siemens Model	A (in)	B (in)
C218V	M7000700/720/740	KTP400	4.84	3.90
C325V, C336V	M7000702/22/42/04/24/44	TP700/MTP700	7.76	5.55
C325V, C336V	M7000702/22/42/04/24/44	TP900	9.88	6.54
C325V, C336V	M7000702/22/42/04/24/44	MTP1000	10.39	7.44
C430V	M7000706/26/46	TP1200/MTP1200	12.20	8.70



Customizing Options:

We can supply the front panels pre-punched with the required apertures for the displays as detailed above. Plus, additional cutouts for buttons and other controls, and digital printing of legends and logos. TECHNOMET-CONTROL enclosures can be customized to any height, width or depth.

Enclosure mounting options:

VESA mounting | wall mounting | pole mounting.