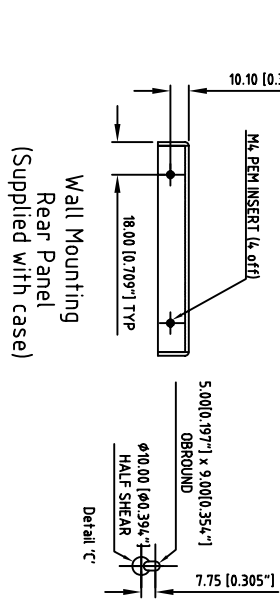
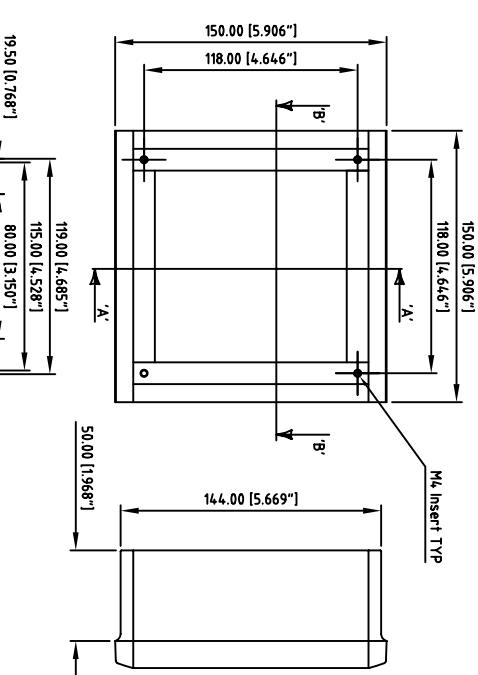
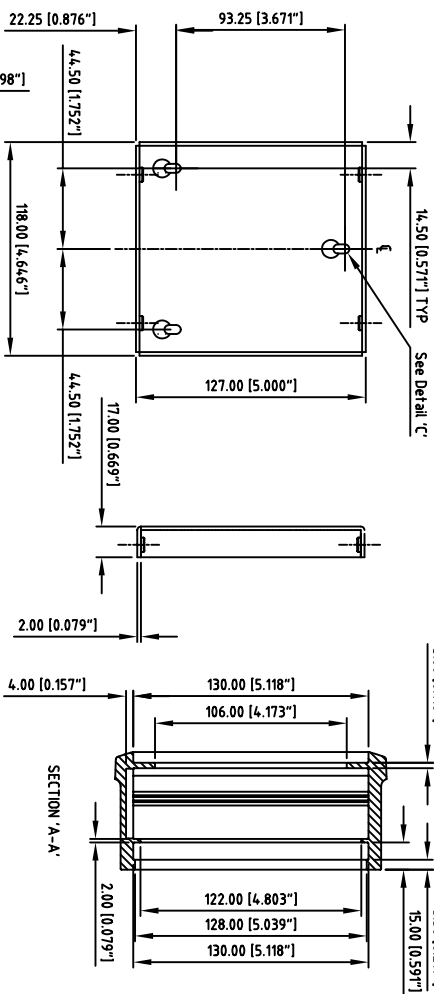
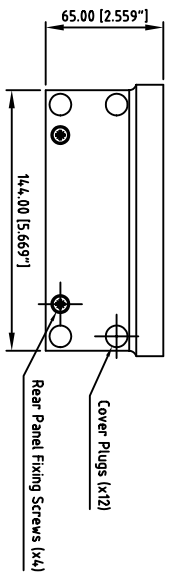


FIRST ANGLE PROJECTION

Note: Subject to technical modifications without prior notice.
 Typographical and other errors do not justify any claim for damages.
 All dimensions should be verified using the actual case.



Multitec Case 'S'
 Part No. M52 15 105

Tolerances unless otherwise stated:
 General tolerances ±0.20
 Resultant tolerances between hole centers ±0.15
 Tolerances on hole diameters ±0.05
 Angles ± 0.5°

Required finish:	Scale:	Checked by:	Drawing Number:	Part Name:	Date drawn:	DO NOT SCALE
	1:4	Ian Cox	M5215105	Multitec "S"	August '05	Material Spec:

METcase ENCLOSURES
 Unit 3, Mitchell Close
 Segensworth East, Fareham,
 Hampshire, PO15 5SE, UK.
 www.metcase.com

Part Number: M5215105
 Sheet 1 of 1

ALL DIMENSIONS IN MILLIMETRES

ORW ENCLLOSURES LTD DATE AS SHOWN. THIS DRAWING CONTAINS PROPRIETARY INFORMATION OF ORW ENCLLOSURES LTD AND IS TENDERED SUBJECT TO THE FOLLOWING CONDITIONS: THE INFORMATION BE RETAINED IN CONFIDENCE, NOT BE REPRODUCED OR COPIED, AND NOT BE USED OR INCORPORATED IN ANY PRODUCT, UNLESS PERMISSION IS OBTAINED IN WRITING FROM ORW ENCLLOSURES LTD.