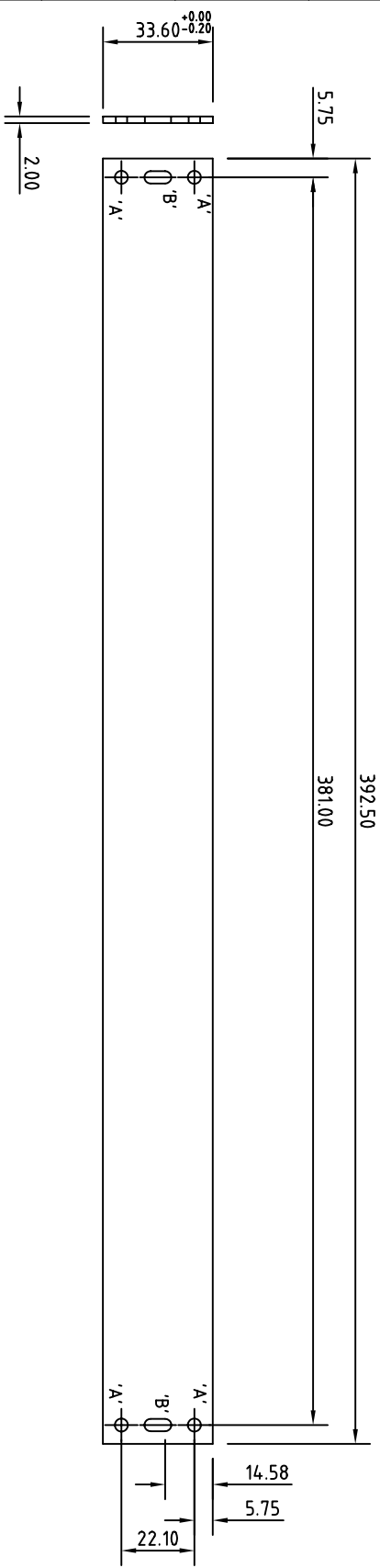
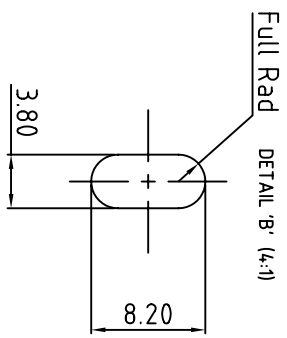


FIRST ANGLE PROJECTION

Note: Subject to technical modifications without prior notice.  
 Typographical and other errors do not justify any claim for damages.  
 All dimensions should be verified using the actual case.



Holes  
 A =  $\phi 4.0\text{mm}$



- NOTES:
1. ALL PANELS TO BE CUT FROM SHEET SUCH THAT THE METAL GRAIN RUNS HORIZONTALLY
  2. PANELS MUST BE SHEARED FROM THE SAME SIDE.
  3. EDGES MUST BE CLEAN AND FREE FROM BURRS OR TOOL WITNESSES.
  4. PANEL FACES MUST BE SCRATCH FREE.
  5. AN INSTRUMENT QUALITY ANODISED FINISH IS REQUIRED.
  6. HANDLE WITH CARE DURING MANUFACTURE.
  7. PANELS ARE TO SUPPLIED WRAPPED IN PROTECTIVE PAPER.
- TOLERANCES  
 LINEAR  $\pm 0.1$   
 ANGULAR  $\pm 0.25^\circ$

Tolerances unless otherwise stated:  
 General tolerances  $\pm 0.20$   
 Resultant tolerances between hole centers  $\pm 0.15$   
 Tolerances on hole diameters  $\pm 0.05$   
 Angles  $\pm 0.5^\circ$   
 Surface finish  $32\sqrt{\text{ }}$

Required Finish		Scale	ALL DIMENSIONS IN MILLIMETRES		DO NOT SCALE	
		1:2				
Drawn By		Checked By	Drawing Number	Date drawn	Material Spec.	
Ian Cox			M5900010	August '05		
METCASE ENCLOSURES		Part Name		1U (THE) Front Panel Kit		
w.w.w.metcase.com		Part Number		M5900010		
Unit 3, Mitchell Close		Part Name		Sheet 1 of 1		
Segensworth East, Fareham,		Part Number		A4		
Hampshire, PO15 5SE, UK.		Part Name				
<p><small>©OWV ENCLOSURES LTD. DATE AS SHOWN. THIS DRAWING CONTAINS PROPRIETARY INFORMATION OF OWV ENCLOSURES LTD AND IS TENDERED SUBJECT TO THE FOLLOWING CONDITIONS. THE INFORMATION BE RETAINED IN CONFIDENCE, NOT BE REPRODUCED OR COPIED, AND NOT BE USED OR INCORPORATED IN ANY PRODUCT, UNLESS PERMISSION IS OBTAINED IN WRITING FROM OWV ENCLOSURES LTD.</small></p>						